

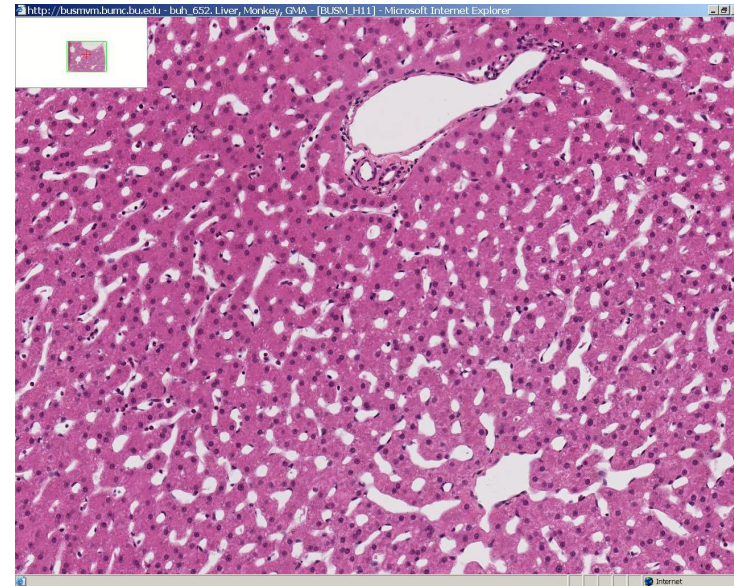
Supplemental Digital Figures 2a-f

Examples of material used for vertical integration at the Boston University School of Medicine. First-year medical students review findings from their Semester 1 gross anatomy lab during their Semester 2 histology course. Second-year students revisit both the gross anatomy and histology content through proctored case studies, self-study cases, or gross anatomy lab demonstrations integrated throughout the second-year, organ-systems-based course called “Disease and Therapy” (DRx). **Figure 2a** is an image of cirrhosis of the liver, identified by first-year students in their fall gross anatomy lab. **Figure 2b** is a virtual slide image of a *normal* liver stained with Hematoxylin and Eosin that first-year students discussed in their spring histology course. **Figure 2c** shows a biopsy of cirrhosis of the liver from a cadaver that students encountered in their first-year, fall semester gross anatomy lab. First-year students discussed this in concert with the image of the normal liver in their spring histology course. **Figure 2d** shows, in a clinical case format, a case of acute appendicitis that medical students encounter in their second-year DRx course. The yellow arrow points to a link to the images the students in their second-year histology course. **Figure 2e** represents gross pathology demonstration of lung cancer during the second-year DRx course and **Figure 2f** is a radiology image that is reviewed at the gross pathology demonstration station for students to identify the corresponding radiology that they will study during their third-year radiology rotation.

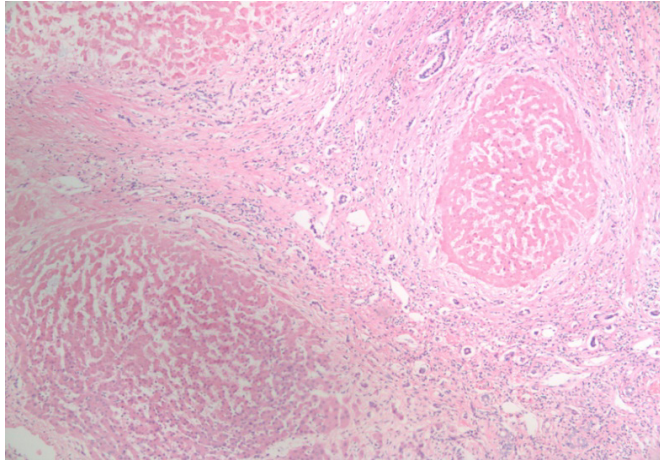
2a



2b



2c



2e



2d

Assignments

[Top] - [18/28/08 - Pathology Lab Session 2: Acute Appendicitis, Hypertrophic Cardiomyopathy] :

Case 3 - Acute Appendicitis - pdf (2560224 bytes)

Case 3 Acute Appendicitis

Learning Objectives

Describe the gross, microscopic, cellular, and molecular features of acute inflammation in the setting of acute appendicitis.

Relate clinical signs and symptoms and clinical laboratory data to these processes.

[Digital Microscopy](#)

buh_632_Appendix_Human_GMA_H&E - [GH_047]

Department of Pathology

2f

