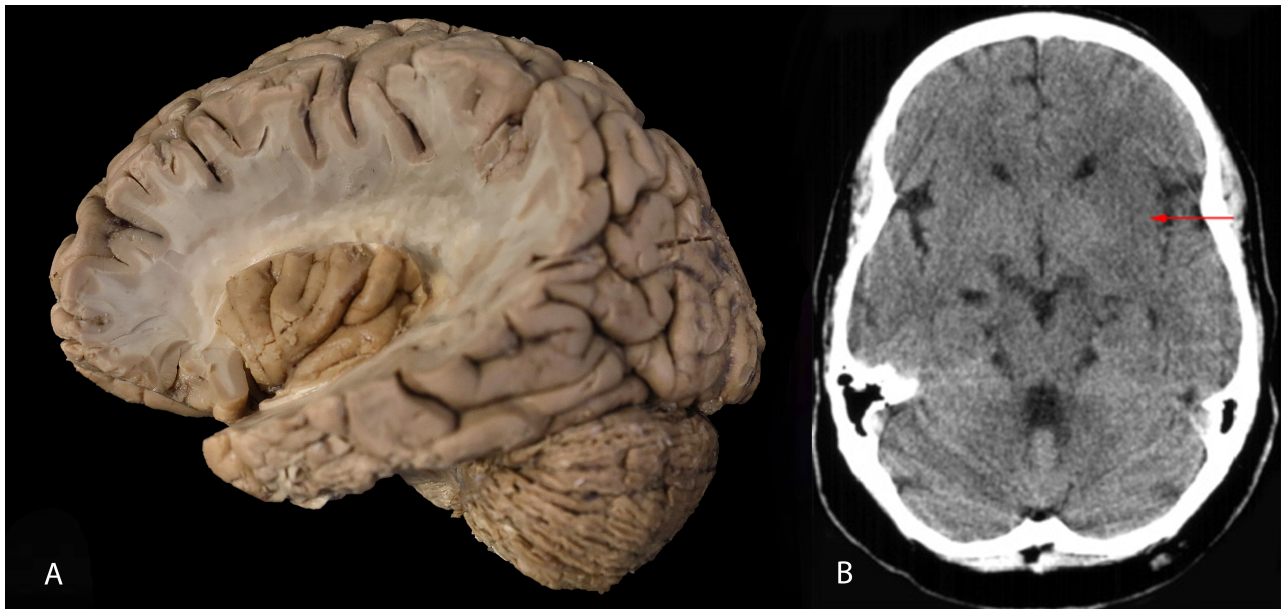


## Supplemental Digital Appendix 1



Images of the human insula (Island of Reil). (Panel A) A photograph of the human insula (left hemisphere) in an anatomical preparation. (Panel B) A transverse section of a CT scan of the brain through the insular lobe, demonstrating loss of the Ribbon Sign (red arrow), i.e., the loss of gray-white interface in the lateral margin of the insula. Compare with contralateral (normal) insula, where the gray-white interface is clear. Loss of the Ribbon Sign is an early radiographic manifestation of middle cerebral artery infarction. Photo in Panel A obtained by author from the anatomy laboratory at his institution, The Ruth and Bruce Rappaport Faculty of Medicine, Technion – Israel Institute of Technology. Photo in Panel B courtesy of Dr. Spencer B. Gay, Department of Radiology and Medical Imaging, University of Virginia School of Medicine.

## Supplemental Digital Appendix 2



*La Condition Humaine* (*The Human Condition*), 1933, by René Magritte (1898–1967). Oil on canvas, 100 x 81 cm. The image is riveting because we are misled to believe the tree is part of the scenery, however there is no reason to believe there is a tree behind the canvas. Photo courtesy of the National Gallery of Art (Washington, DC).

### Supplemental Digital Appendix 3



*La Trahison des Images* (*The Treachery of Images*), 1929, by René Magritte (1898–1967). Oil on canvas, 60.3 x 81.1 cm. The “legend” in this painting reads: “Ceci n’est pas une pipe,” namely “this is not a pipe.” Photo courtesy of ADAGP Images, Paris, 2019.



## Supplemental Digital Appendix 4



*Les Deux Mystères* (*The Two Mysteries*), 1966, by René Magritte (1898–1967). Oil on canvas, 65 x 80 cm. Photo courtesy of ADAGP Images, Paris, 2019.