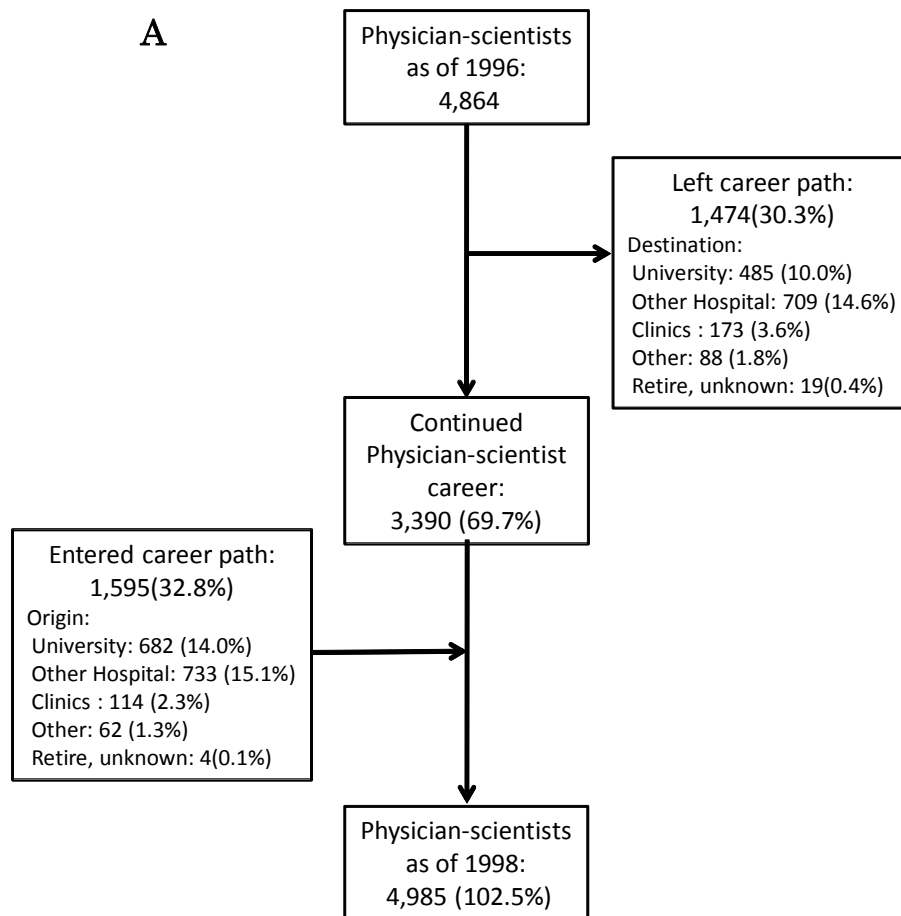


Supplemental Digital Figure 1 Career transitions for physician-scientists during two 2-survey periods. The retention rate, destination of those who left the physician-scientist career, and the origin of those entering the track are presented for 1996–1998 (panel A) and 2006–2008 (panel B). Data for each two-survey period include only those physicians who responded to both surveys.



Supplemental Digital Figure 1 (*continued*) Career transitions for physician-scientists during two 2-survey periods. The retention rate, destination of those who left the physician-scientist career, and the origin of those entering the track are presented for 1996–1998 (panel A) and 2006–2008 (panel B). Data for each two-survey period include only those physicians who responded to both surveys.

