

Fig. S1

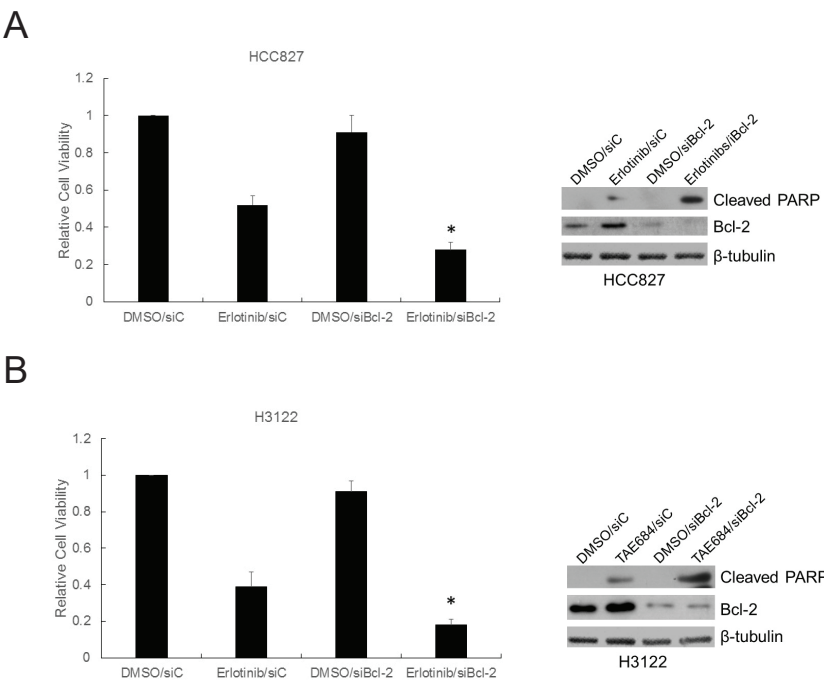


Fig. S1. Knockdown of Bcl-2 enhances the efficacy of TKIs. The Bcl-2 siRNAs were transfected into HCC827 (A) or H3122 (B) cells. 48 hrs after transfection cells were treated with erlotinib (1 μ M) (A) or TAE684 (0.3 μ M) (B). Cell viability was determined after cells were treated for 72 hrs. Expression of indicated proteins was assessed by immunoblots.