

Table S1. Serum markers and histological features at diagnosis in patients with suspected celiac disease.

Patient code	SV _{eq}		I-FABP (ng/ml)	Anti-TG2 IgA (U/ml)	Anti-DGP IgA (U/ml)	M-O score	IELs/100 epithelial cells
	C _{max} (nM)	t _{max} (h)					
CYP 36 ^a	6.2±0.3	4	0.30±0.01	85	43	1	76
CYP 40	9.4±0.7	2	4.10±0.08	96	8	0	12
CYP 15	10.0±1.0	12	1.19±0.09	56	4	3a	36
CYP 26	19.7±1.2	2	0.46±0	34	8	3b	ND
CYP 05	25.8±2.0	1	4.67±0.2	229	36	3c	62
CYP 41	26.4±1.4	1	4.64±0.05	255	56	3c	58
CYP 18	28.2±0.7	1	2.26±0.1	90	47	3b	67
CYP 23	30.6±1.0	1	4.58±0.02	207	55	3c	54
CYP 16	34.3±2.8	2	0.45±0.002	21	19	3a	42
CYP 07	34.6±1.1	1	4.07±0.08	284	256	3c	86
CYP 33	36.8±1.4	2	7.02±0.03	102	46	3c	56
CYP 13	38.4±1.7	1	0.49±0.05	69	13	3a	26
CYP 06	45.4±5.0	0.5	1.24±0.04	213	12	3a	24
CYP 32	54.0±3.6	2	2.02±0.002	106	14	3b	51
CYP 03	56.8±7.9	0.5	1.04±0.01	97	216	3c	95
CYP 39	58.1±1.9	1	1.41±0.01	158	85	3c	83
CYP 42	59.7±5.5	2	1.93±0	168	32	3a	55
CYP 28	74.6±2.7	2	0.83±0.04	30	5	3a	47
CYP 31	87.8±5.2	2	0.54±0.007	42	10	3b	19
CYP 25	97.9±6.0	0.5	1.91±0.03	152	57	3b	87

Table S1. Serum markers and histological features at diagnosis in patients with suspected celiac disease (continued).

SV_{eq}: simvastatin-equivalent; C_{max}, maximum concentration; t_{max}, time of the maximum concentration; I-FABP, intestinal fatty acid binding protein; anti-TG2 IgA, anti-human transglutaminase 2 IgA antibody; anti-DGP IgA, anti-deamidated gliadin peptides IgA antibody; M-O score: Marsh-Oberhuber score; IELs, intraepithelial lymphocytes. ND: Not determined.

The cut-off value recommended by the manufacturers of the anti-TG2 and anti-DGP ELISA kits is 18 U/ml.

^aSV C_{max} may be higher than reported, because the concentration at the time-point immediately after t_{max} was lower than the concentration at the next time-point, and could therefore have been an experimental artifact. For example, see Figure S1.

Table S2. Serum markers and histological features in treated patients with celiac disease.

Patient code	GFD (m)	SV _{eq}		I-FABP (ng/ml)	Anti-TG2 IgA (U/ml)	Anti-DGP IgA (U/ml)	M-O score	IELs/100 epithelial cells
		C _{max} (nM)	t _{max} (h)					
CYP 35 ^a	14	5.1±0.5	2	0.33±0.01	4	11	3c	40
CYP 33 ^b	12	6.2±0.2	2	3.81±0.19	6	ND	3a	ND
CYP 11	24	6.8±0.7	2	2.89±0.01	3	41	3c	61
CYP 37	29	10.1±0.7	1	1.45±0.03	8	39	3a	40
CYP 20	72	10.1±0.8	1	0.50±0.02	12	24	3b	34
CYP 38	17	10.4±0.2	3	1.29±0.01	9	12	2	51
CYP 14	12	10.4±0.6	2	3.14±0.2	3	45	3a	38
CYP 27 ^a	12	10.8±1.1	2	1.07±0.02	7	66	3b	25
CYP 23 ^b	12	14.6±0.3	0.5	2.68±0.02	2	ND	3b	ND
CYP 09	36	14.9±1.5	2	0.67±0.03	10	190	3b	74
CYP 24	36	15.6±1.5	1	0.53±0.01	11	8	3a	29
CYP 17	24	16.6±1.7	1	1.30±0.1	1	233	3c	40
CYP 02	24	16.8±1.2	2	0.71±0.02	3	11	0	28
CYP 08	18	17.5±1.4	1	0.52±0.02	3	5	0	23
CYP 10	20	18.3±1.6	1	1.22±0.01	10	4	3a	34
CYP 06 ^b	12	19.7±0.1	0.5	0.52±0.01	6	ND	2	ND
CYP 29	15	20.2±2.2	2	1.70±0.02	3	6	3a	74
CYP 30	38	24.6±2.2	2	2.78±0	15	19	3b	34
CYP 19 ^a	12	27.3±0.7	3	0.66±0.06	9	99	3a	59
CYP 22	29	29.2±0.7	2	1.71±0.07	4	4	3c	51
CYP 01	54	29.4±1.2	1	0.94±0.05	0.3	25	3c	57
CYP 04	20	32.7±1.6	1	0.98±0.04	2	53	3b	59
CYP 28 ^b	12	46.1±1.2	2	0.53±0.02	4	ND	3a	ND
CYP 21	29	55.1±4.6	2	2.26±0.2	4	81	3b	60
CYP 34	41	70.4±2.3	2	6.77±0.07	3	5	3a	34

Table S2. Serum markers and histological features in treated patients with celiac disease (continued).

GFD (m), Months in a gluten free diet; SV_{eq} , simvastatin equivalent; C_{max} , maximum concentration; t_{max} , time of the maximum concentration; I-FABP, intestinal fatty acid binding protein; anti-TG2 IgA, anti-human transglutaminase 2 IgA antibody; anti-DGP IgA, anti-deamidated gliadin peptides IgA antibody; M-O score: Marsh-Oberhuber score; IELs, intraepithelial lymphocytes. ND: Not determined.

The cut-off value recommended by the manufacturers of the anti-TG2 and anti-DGP ELISA kits is 18 U/ml.

^a $SV C_{max}$ may be higher than reported, because the concentration at the time-point immediately after t_{max} was lower than the concentration at the next time-point, and could therefore have been an experimental artifact. For example, see Figure S1.

^b Patient initially included in the cohort of untreated patients, who fulfilled the inclusion/exclusion criteria for the treated group during a follow-up visit one year after the initial visit.

Table S3. Serum markers and histological features in celiac patients from Table S2, who attended a second follow-up visit 1 year later.

Patient code	GFD (m)	SV _{eq}		I-FABP (ng/ml)	Anti-TG2 IgA (U/ml)	M-O score
		C _{max} (nM)	t _{max} (h)			
CYP 35	26	4.3±0.5	1	0.03±0.003	16	3a
CYP 37	41	4.5±1.1	0.5	2.41±0.04	2	ND
CYP 24	48	5.3±0.6	2	0.81±0.04	7	3b
CYP 02	36	5.6±0.7	1	1.53±0.07	6	3b
CYP 08	30	6.6±0.9	2	0.19±0.002	1	ND
CYP 38	29	6.9±0.3	3	0.61±0.01	8	3b
CYP 30	50	7.5±1.7	1	1.41±0.05	5	ND
CYP 17	36	9.5±2.7	2	0.63±0.01	14	3a
CYP 19	31	12.8±1.6	2	0.46±0.02	8	3c
CYP 11	36	14.0±3.6	2	1.21±0.01	12	3b
CYP 04	32	17.8±6.2	2	0.67±0.04	7	ND
CYP 29	27	17.8±4.9	1	0.68±0.01	7	ND
CYP 21	41	24.5±1.0	0.5	0.80±0.04	10	3b
CYP 34	53	25.9±0.9	2	6.76±0.21	4	2

GFD (m), Months in a gluten free diet; SV_{eq}, simvastatin equivalent; C_{max}, maximum concentration; t_{max}, time of the maximum concentration; I-FABP, intestinal fatty acid binding protein; anti-TG2 IgA, anti-human transglutaminase 2 IgA antibody; M-O score: Marsh-Oberhuber score. ND: The biopsy samples could not be obtained.

The cut-off value recommended by the manufacturer of the anti-TG2 ELISA kit is 18 U/ml.

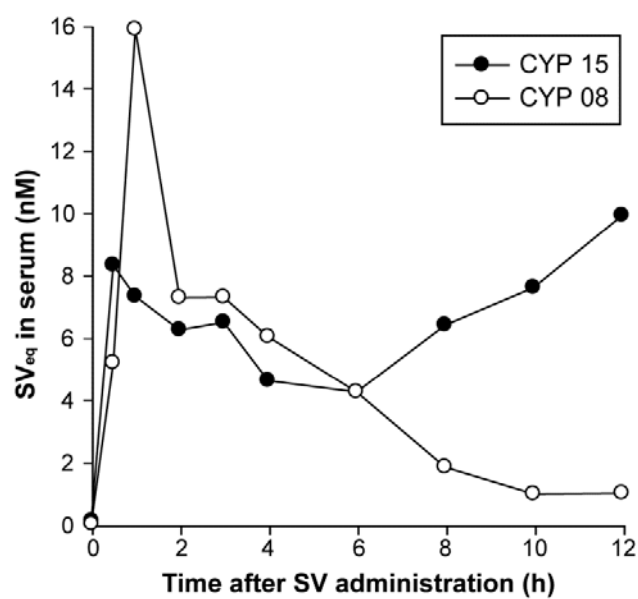


Figure S1. Serum concentration of SV_{eq} versus time in patient CYP 15 after single oral dose of 20 mg SV. Data from patient CYP 08 is plotted as example of a typical concentration versus time curve.

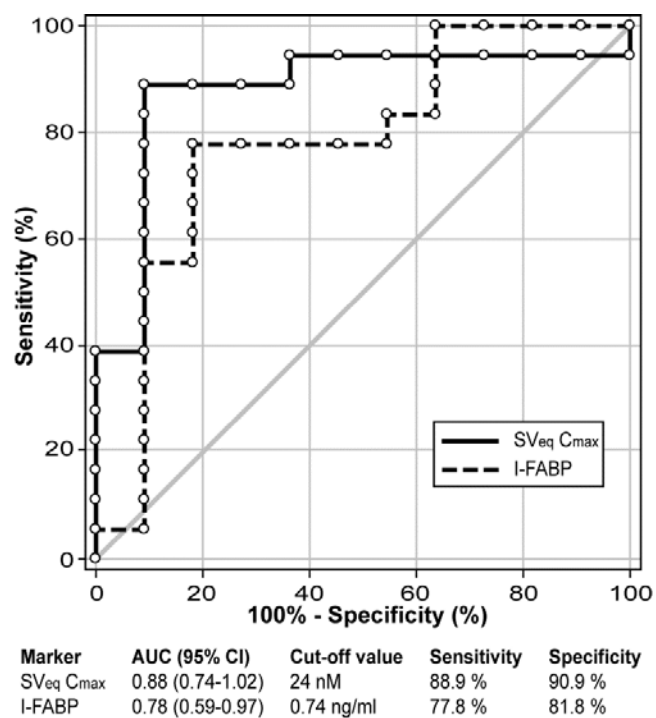


Figure S2. Receiver operating characteristic curve for serum $SV_{eq} C_{max}$ and I-FABP, based on 18 untreated celiac disease patients and 11 healthy volunteers.