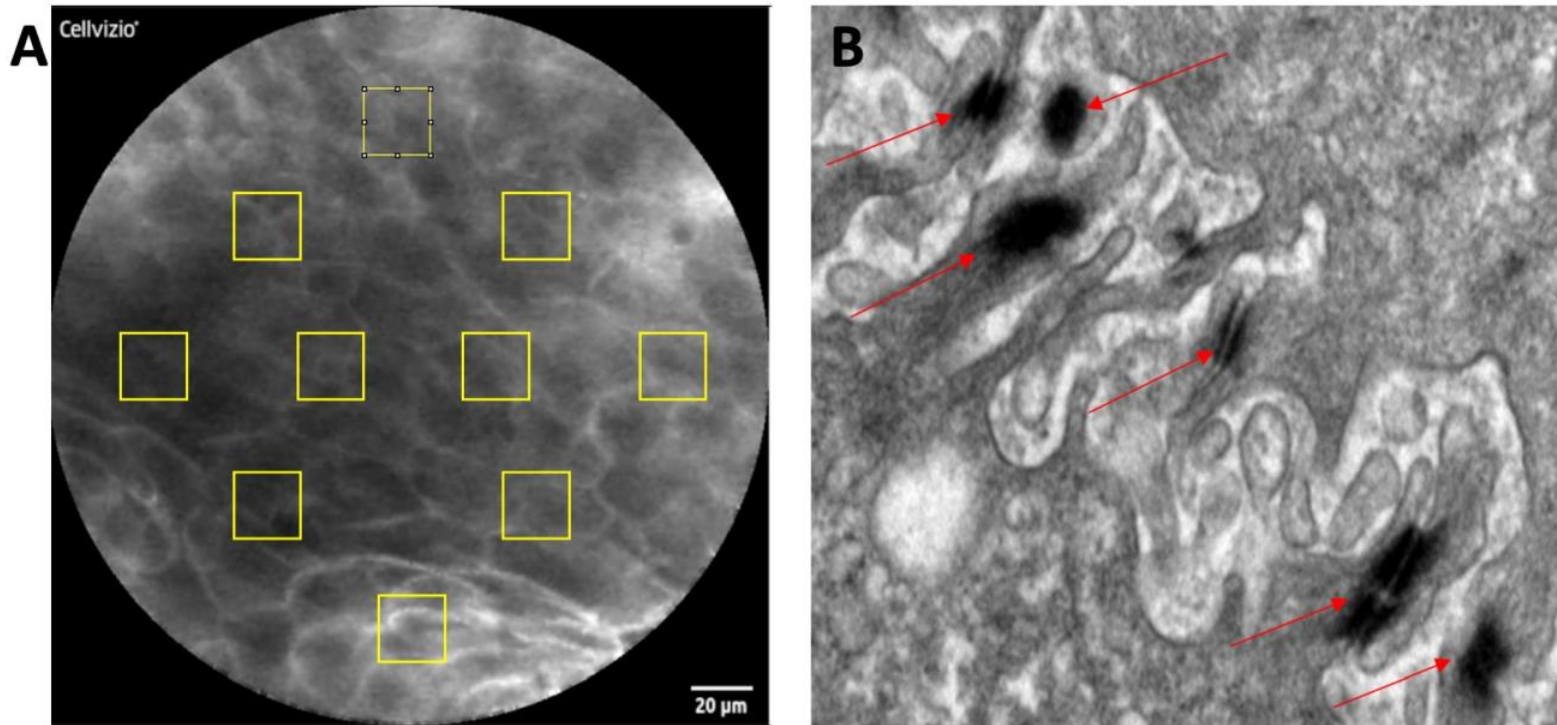


Supplemental Figure 1.



(A). Measurement of fluorescein leak intensity. For each still image captured from the confocal video, a total of 10 boxes (20μm x20μm) were used to sequentially and systematically sample the fluorescent intensity of the image. The fluorescent intensity of each box was obtained by ImageJ's "Analyze" → "Measure" function. The mean intensity of the 10 boxes was used to represent the fluorescein leak intensity of the image. **(B).** Desmosomes are electron dense structures that resemble railroad tracks (red arrows) on TEM.