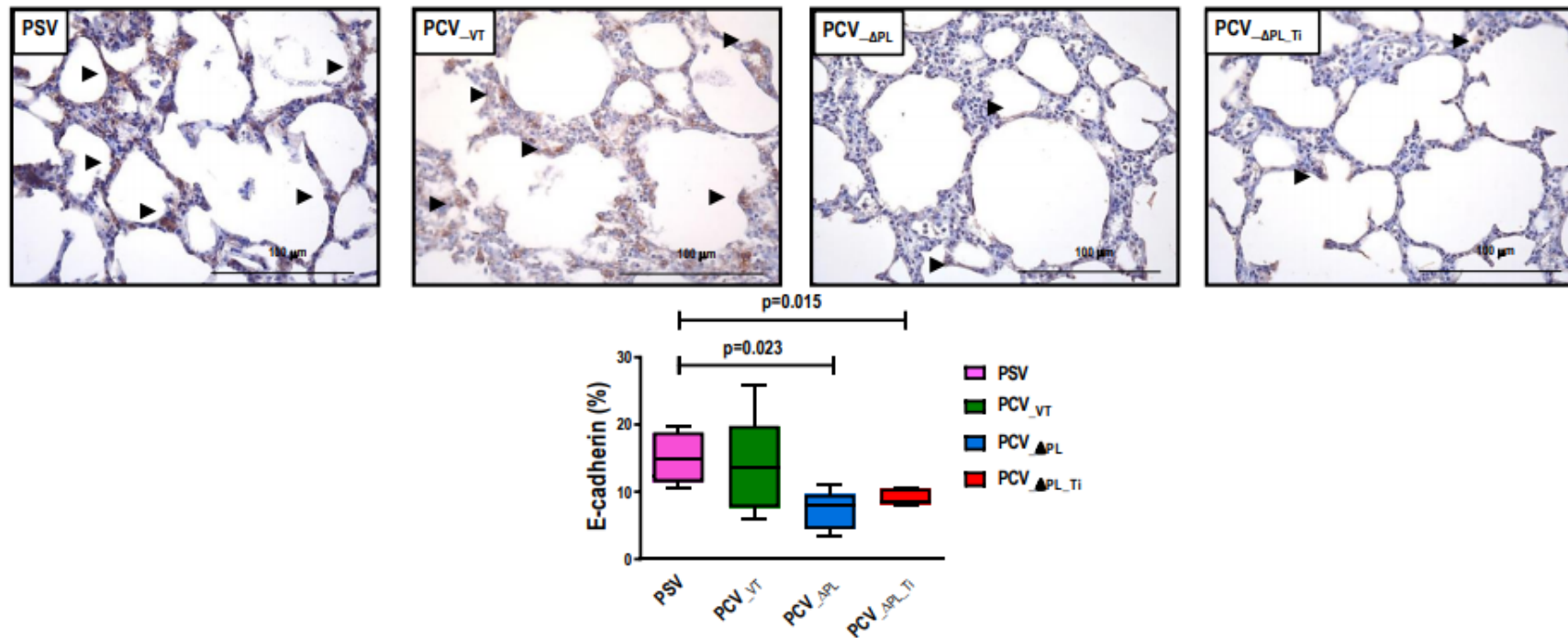


Supplemental Figure 3: Representative immunohistochemical images of lung tissue E-cadherin and quantification



Supplemental Figure 3: Upper panels depict representative immunohistochemical images of lung tissue E-cadherin in the PSV, PCV_{VT}, and PCV_{ΔPL} groups. PSV: pressure-support ventilation adjusted to tidal volume (V_T) = 6 mL/kg; PCV_{VT}: pressure-controlled ventilation with the same V_T of pressure-support ventilation; PCV_{ΔPL}: pressure-controlled ventilation with dynamic ΔP_L similar to that achieved by pressure-support ventilation; PCV_{ΔPL_Ti}: pressure-controlled ventilation with dynamic ΔP_L and inspiratory time (T_i) similar to that achieved by pressure-support ventilation. Arrows represent immunohistochemical staining for E-cadherin. The lower panel illustrates the percentage of E-cadherin in lung tissue.