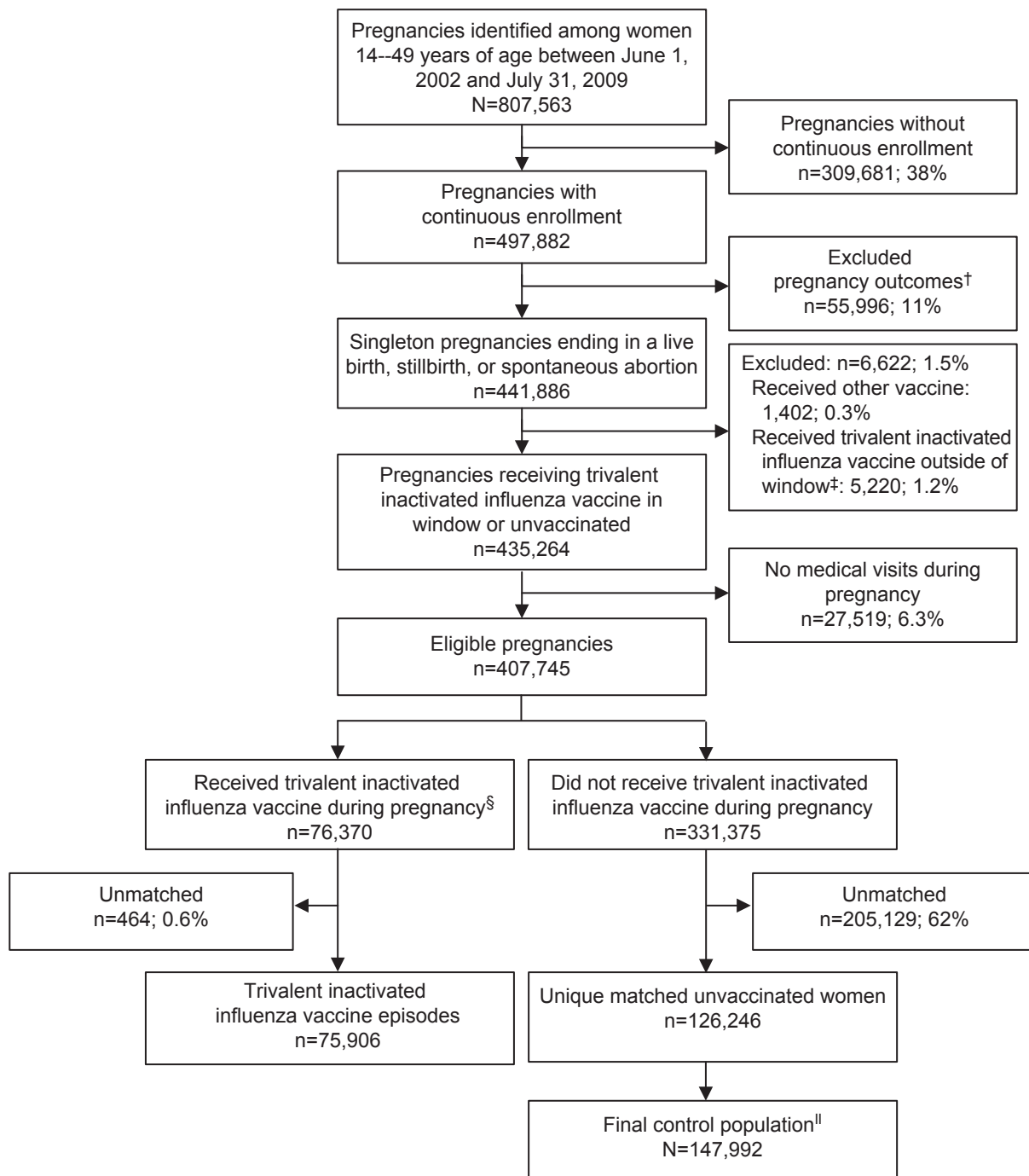


Appendix 1. Flow Through the Study



*Continuous enrollment starting 6 months before pregnancy start, through pregnancy, including 2 months postpartum.

†Multiple gestations, ectopic pregnancies, gestational trophoblastic disease, therapeutic abortions, and undefined.

‡"Outside of window" is the first or last week of pregnancy.

§119 pregnancies received trivalent inactivated vaccine during consecutive seasons and were retained as two episodes.

¶Control episodes (matched 1:2 controls with replacement, matched sets were retained with at least 1 control); 4,786 trivalent inactivated vaccine episodes had 1 control (3%).

Nordin JD, Kharbanda EO, Vazquez Benitez G, Nichol K, Lipkind H, Naleway et al. Safety of trivalent inactivated influenza vaccine in pregnant women. *Obstet Gynecol* 2013;121.

The authors provided this information as a supplement to their article.