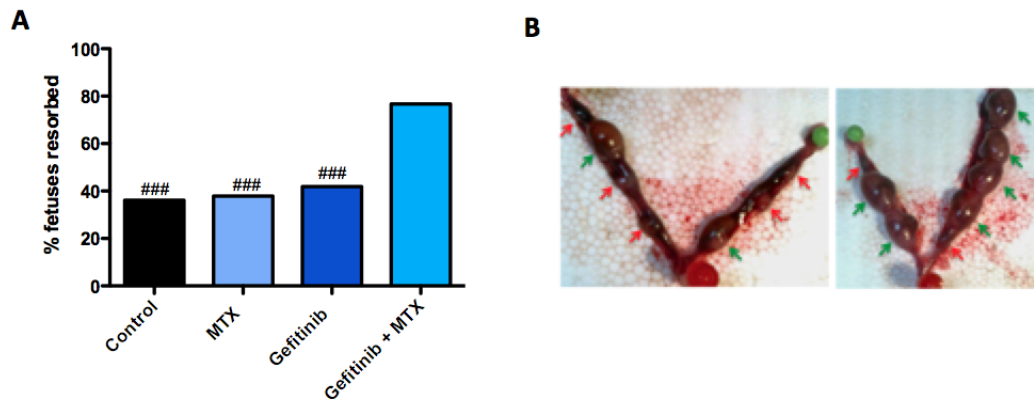


S3



Supplementary Figure 3: Combination methotrexate (MTX) and gefitinib are more potent when combined to induce resorption of eutopic fetuses. **(A)** % resorption of fetuses (resorption = empty implantation sites) in immunocompetent BalbC/Jamsu mice at E15, after intraperitoneal injection of the various treatments at E10. There were 5-7 pregnant BalbC/Jamsu mice and 30-43 implantation sites in each group. **(B)** Examples of unaffected (green arrow) and resorbed/resorbing (red arrow) embryos in the uterine horns of immunocompetent BalbC/Jamsu mice after intraperitoneal administration of different treatments. Left panel is from the group treated with methotrexate and gefitinib while the right panel is from the group treated with methotrexate only. ### $P \leq 0.003$ vs. MTX+Gefitinib.