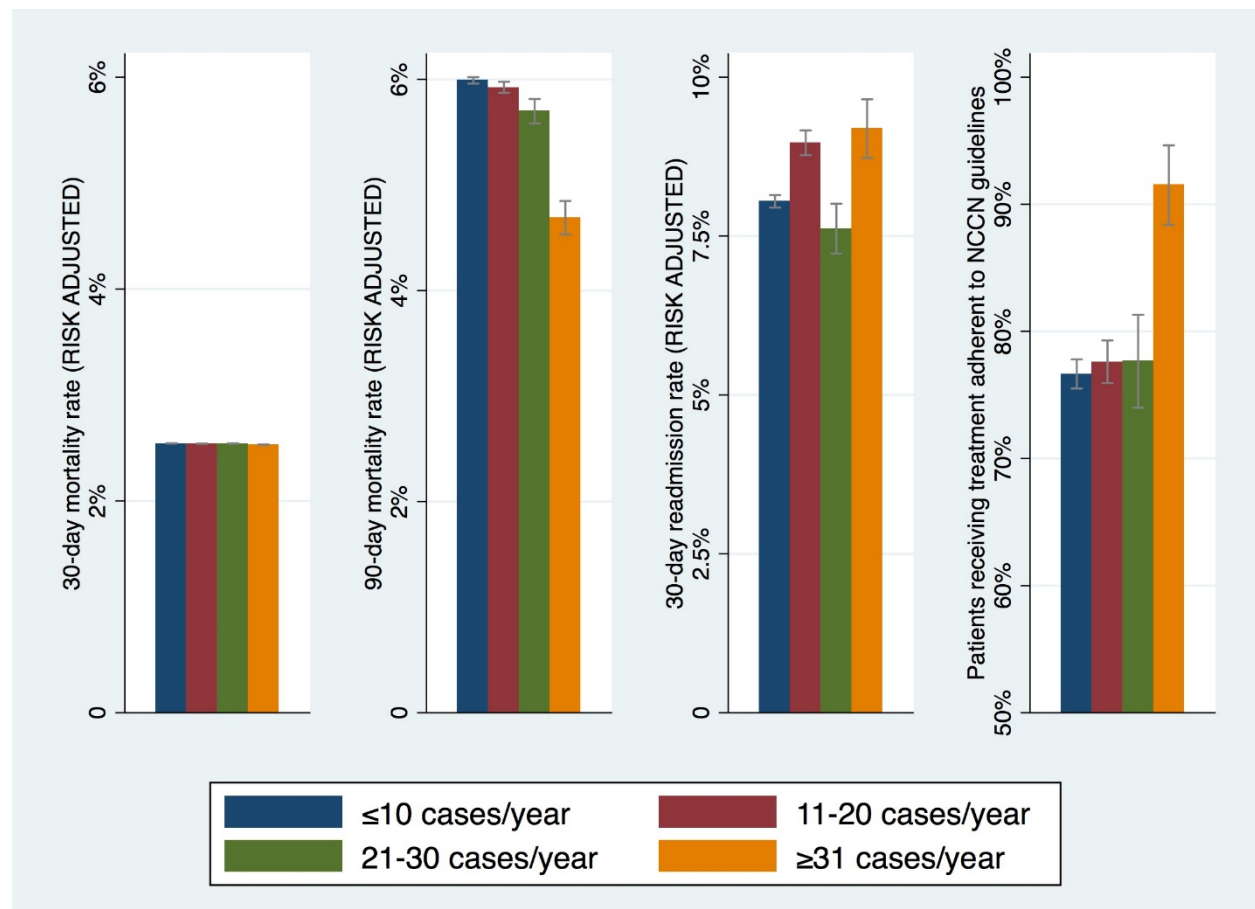


Appendix 1. Comparative performance of risk-adjusted 30-day readmission rate to other quality of care metrics in patients travelling less than 5 miles for care (30- and 90-day mortality and adherence to NCCN guidelines). Data adjusted for patient medical and sociodemographic factors (age, race, income, Charlson comorbidity index, and insurance status), and treatment factors (hospital volume, distance from place of residence to the hospital, receipt of neoadjuvant chemotherapy and year of diagnosis).



Uppal S, Spencer RJ, Rice LW, del Carmen MG, Reynolds RK, Griggs JJ. Hospital readmission as a poor measure of quality in ovarian cancer surgery. *Obstet Gynecol* 2018; 132.

The authors provided this information as a supplement to their article.

©2018 American College of Obstetricians and Gynecologists.