

Supplemental Figures

Baker et al, In Vivo Remodeling of an Extracellular Matrix Cardiac Patch in an Ovine Model

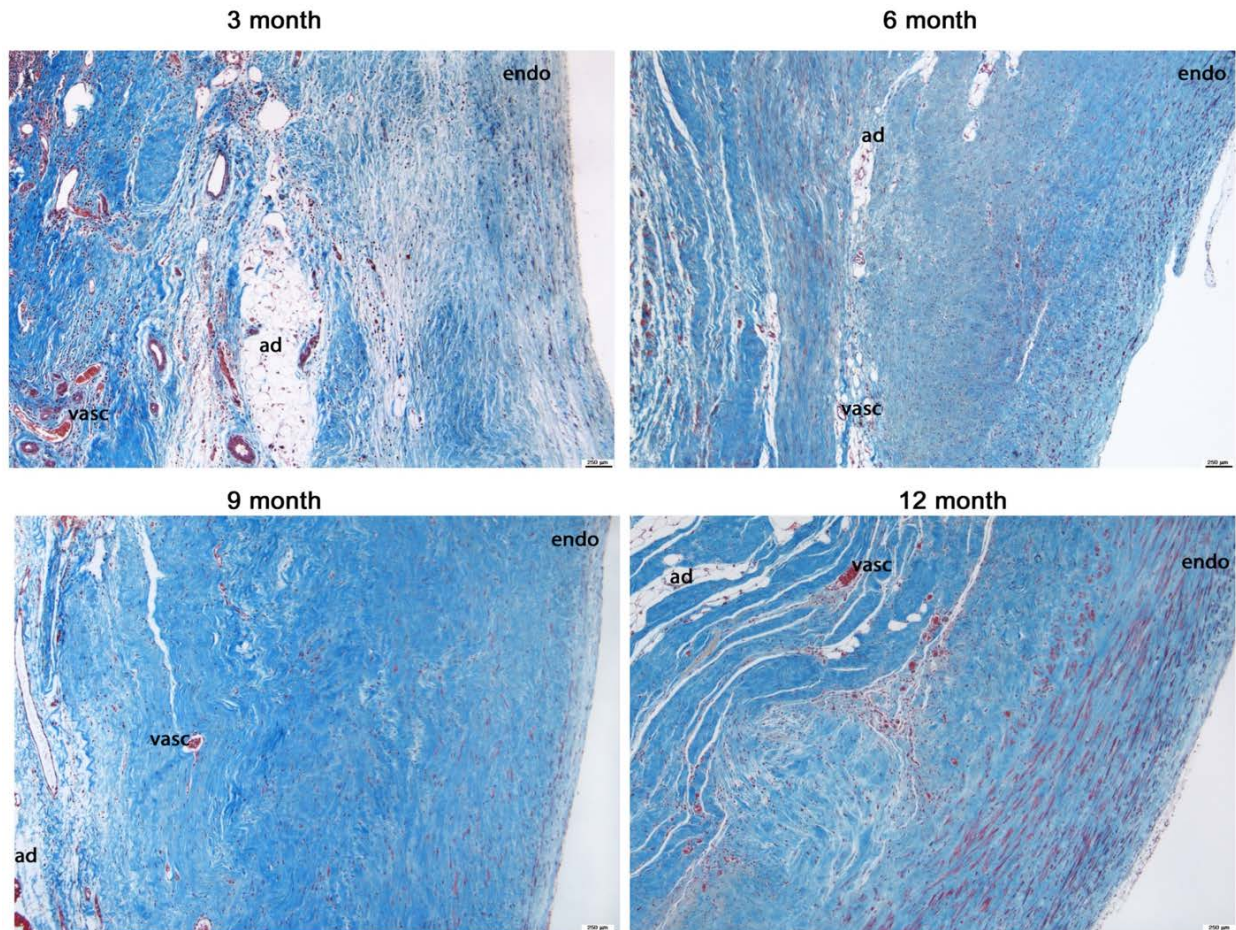


Figure S1. Trichrome Staining of Patch Areas over Time

Histological sections from the right ventricle patch at 3, 6, 9 and 12 months. Trichrome staining (blue) shows the extensive fibrosis present at all stages observed. Adipocytes; ad, microvasculature; vasc, endothelial cells; endo. Calibration bar: 250 μm

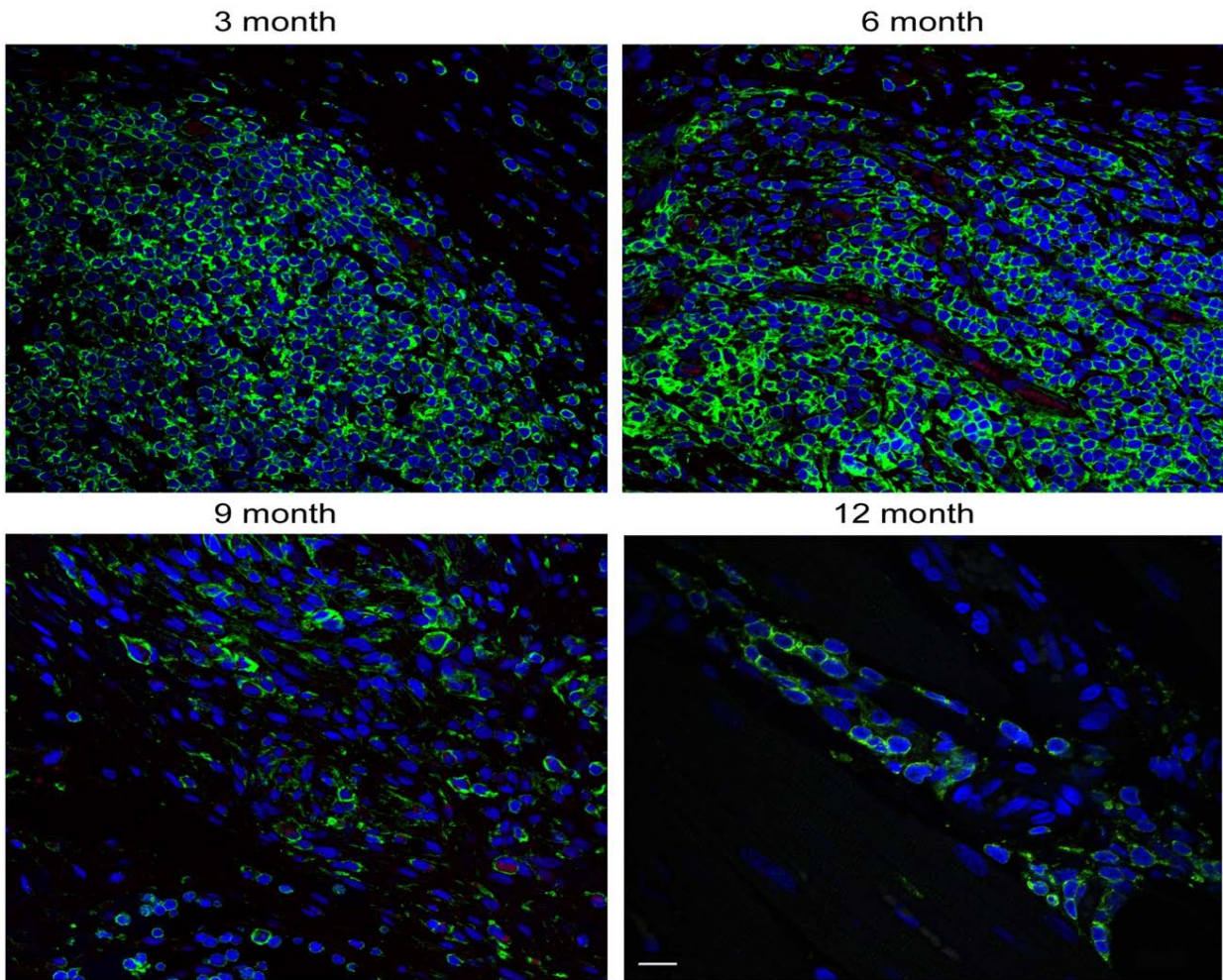


Figure S2. Inflammatory Response in the Patch over Time

CD45 positive cells were used as a marker of an inflammatory response and detected using immunohistochemistry to detect CD45 positive cells (green) at 3, 6, 9 and 12 months after implantation of the right ventricular patch. Nuclei are stained blue with DAPI. Calibration bar: 100 μm

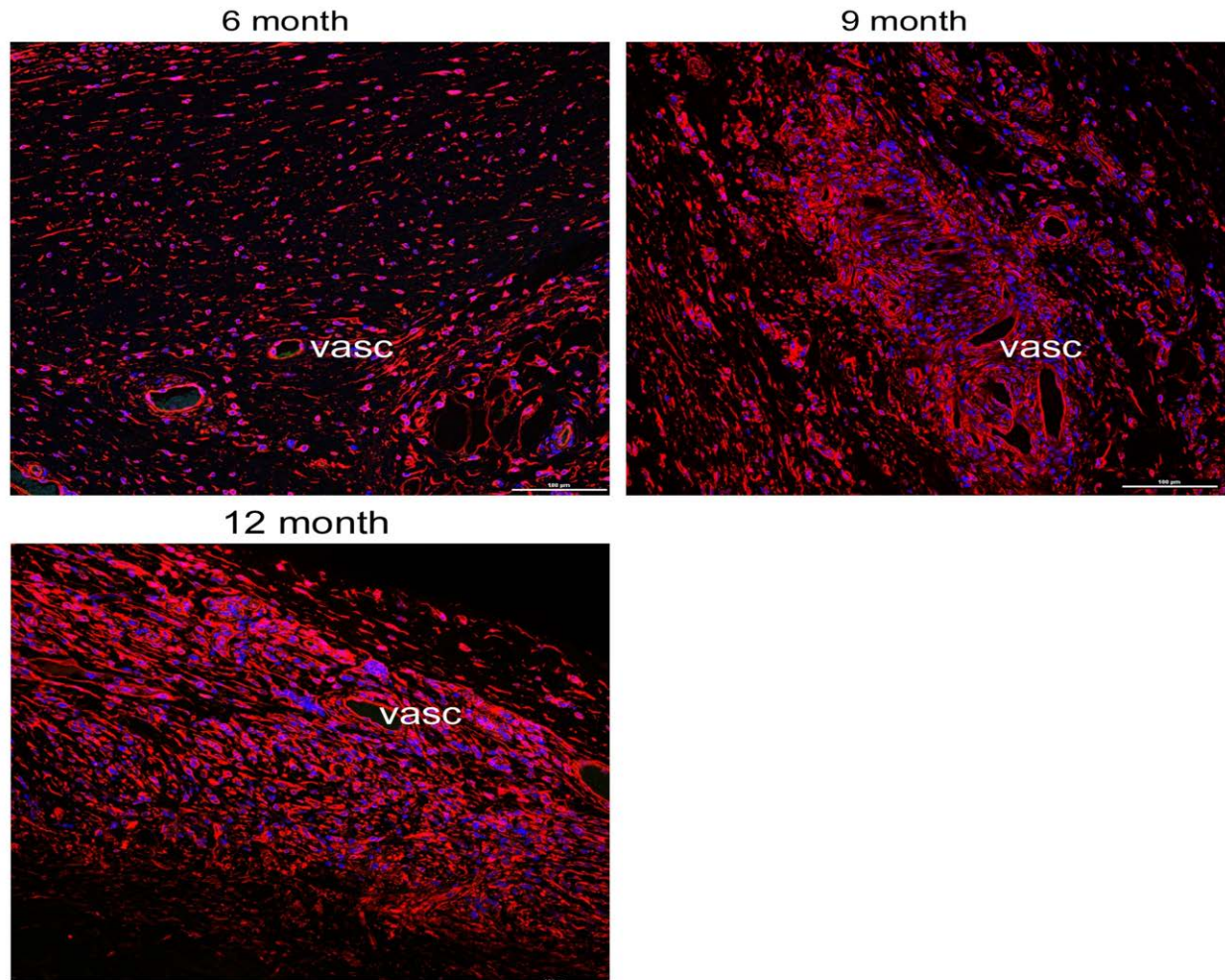


Figure S3. Smooth muscle, Endothelial cells and Fibroblasts in the Patch over Time.

Vimentin staining was used to detect the cell types in 6, 9 and 12 month right ventricle patch areas. Nuclei are stained blue with DAPI. microvasculature; vasc. Calibration bar: 100 μ m