

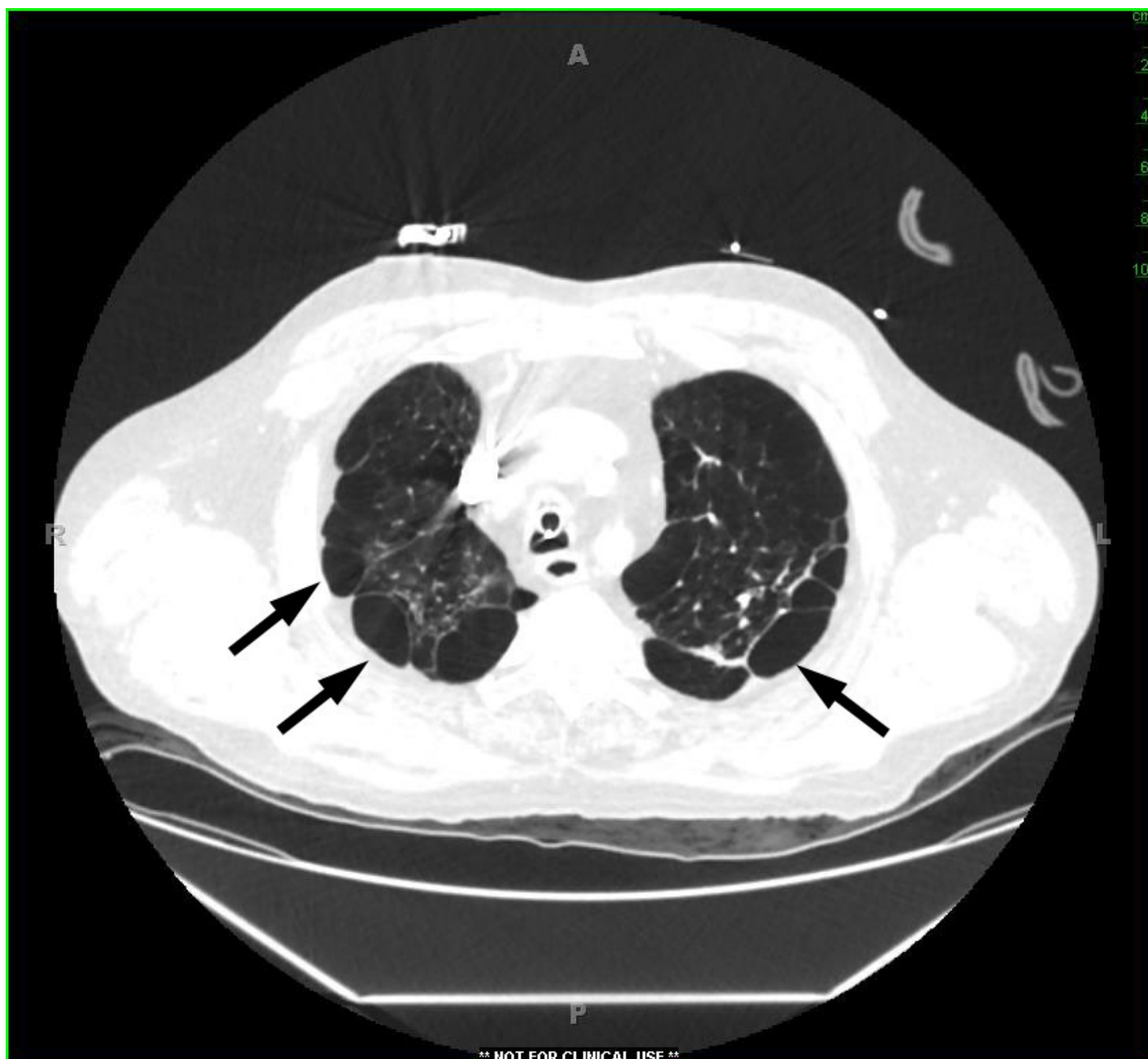
# Comparative Performance of Pulmonary Ultrasound, Chest X-ray, and CT Amongst Patients with Acute Respiratory Failure

## SUPPLEMENTAL CONTENT 3 – High Resolution Case Images

**Fig 2A/B (High-res).** Case 1 chest CT; Arrows = pleural-based nodules



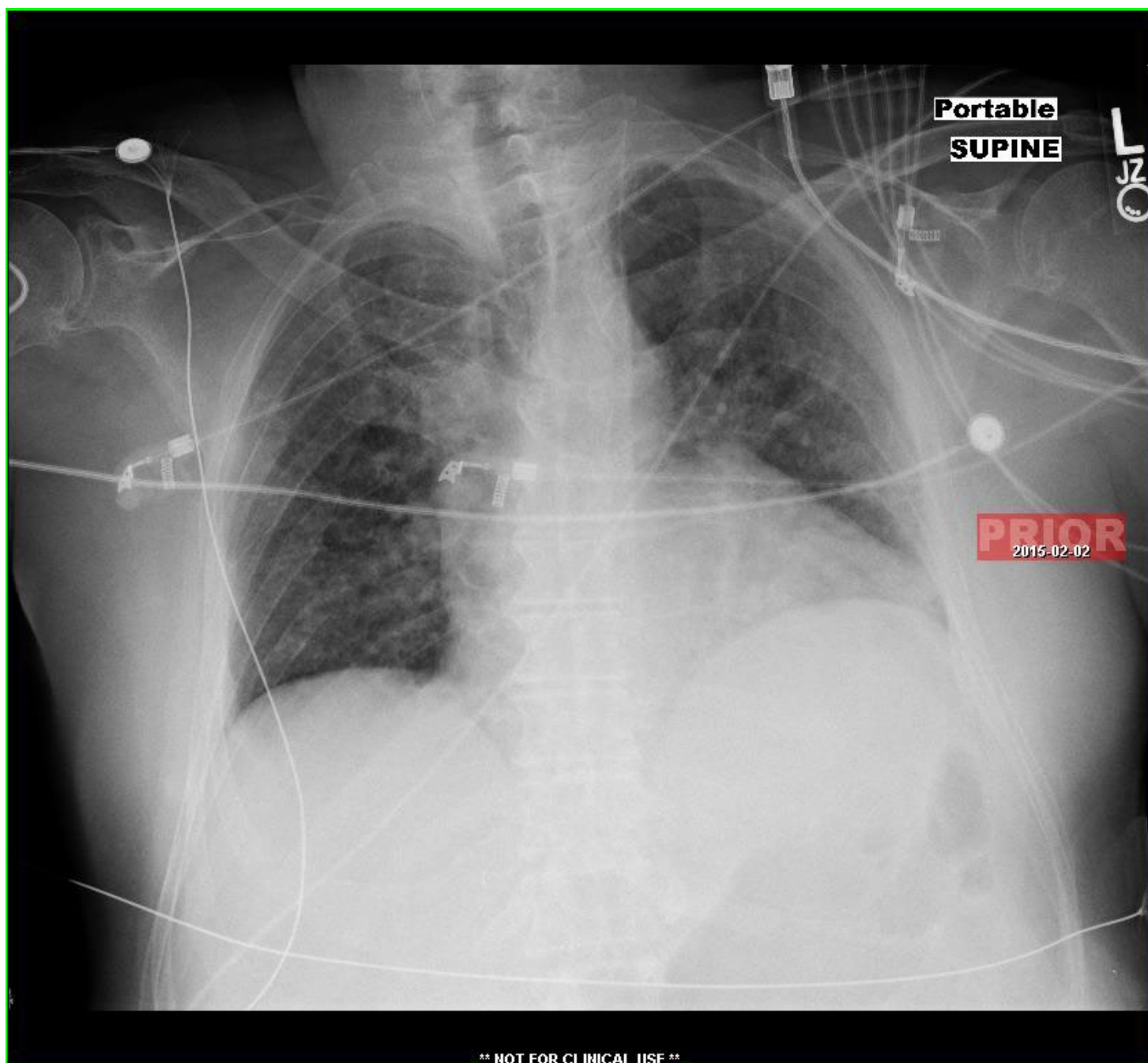
**Fig 2C (High-res).** Case 2 chest CT; Arrows = bullae.



**Fig 2D (High-res).** Case 3 chest CT; Arrow = right upper lobe mass.



**Fig 2E (High-res).** Case 3 portable chest X-ray without right upper lobe mass identified.



**Fig 2F (High-res).** Case 4 chest CT; Arrow = posterior left lower lobe consolidation missed by ultrasound; \* = stomach.

