

Supplementary Table 1: Demographic and baseline characteristics of 19 cases of COVID-19 ($n=19$).

Parameters	Values
Age (years)	
Median	44.0 (33.0, 69.0)
Range	24–85
Sex	
Male	9 (47.4)
Female	10 (52.6)
Epidemiological history	
Imported cases from Wuhan City or Hubei Province	6 (31.6)
Known contact with individuals from Wuhan or Hubei	1 (5.3)
Known contact with cases of confirmed COVID-19	4 (21.1)
Known contact with family members of confirmed COVID-19	6 (31.6)
None or unclear	2 (10.5)
Incubation period	
Uncertain	8 (42.1)
With clear incubation period	11 (57.9)
Median (days)	6.0 (3.0, 8.0)
Range (days)	2–10
Severity of COVID-19	
Mild-Moderate	17 (89.5)
Severe	2 (10.5)

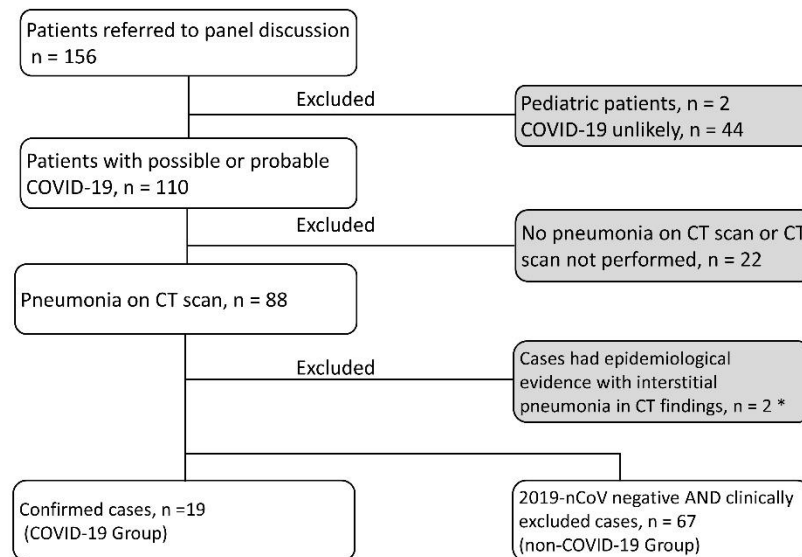
Data are presented as n (%), median (Q_1 , Q_3) or range. COVID-19: Coronavirus disease 2019.

Supplementary Table 2: CT findings between COVID-19 and non-COVID-19 patients.

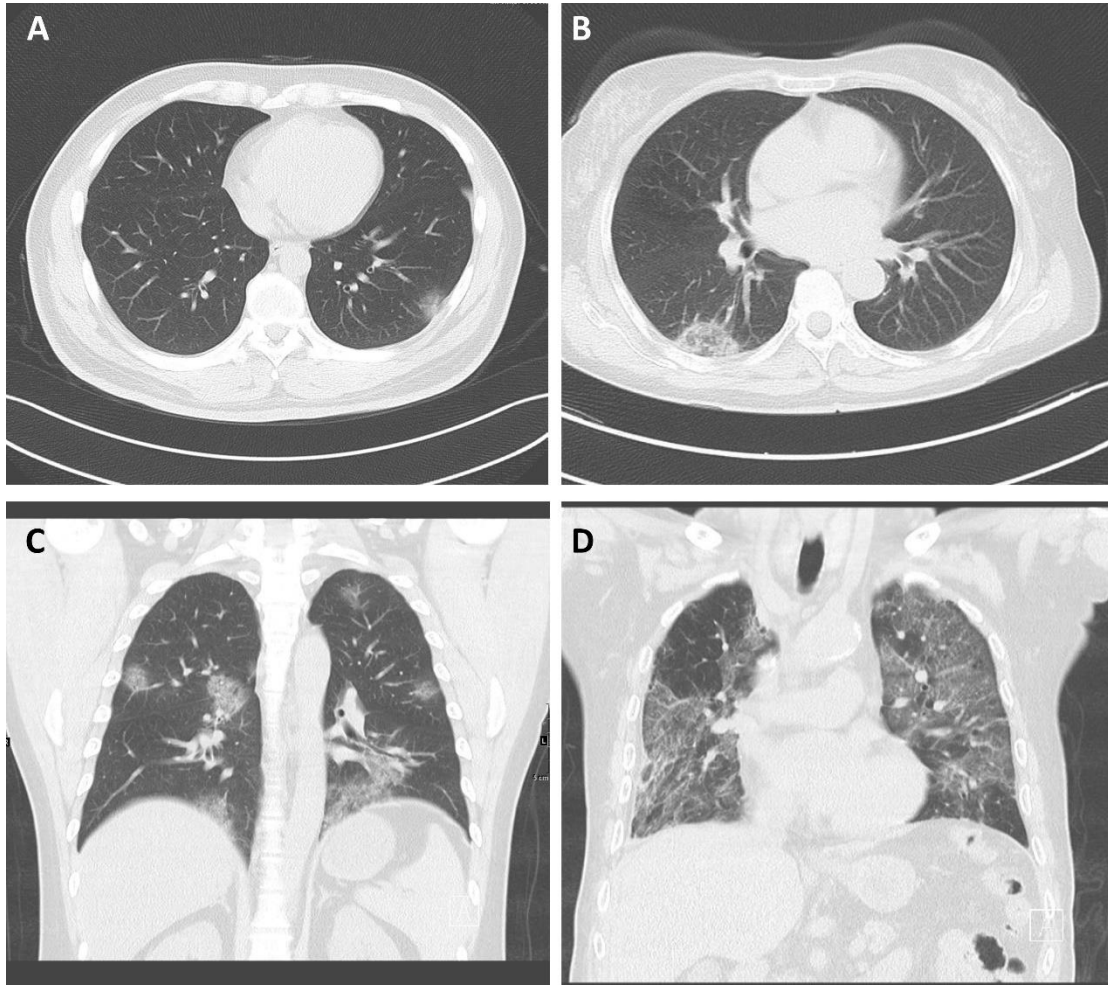
Items	COVID-19* ($n = 18$)	Non-COVID-19 ($n = 67$)	P
Number of lobes involved by pneumonia			0.020 [†]
1	6 (33.3)	28 (41.8)	
2	3 (16.7)	20 (29.9)	
3	0 (0.0)	8 (11.9)	
4	5 (27.8)	3 (4.5)	
5	4 (22.2)	8 (11.9)	
Involved lobes ≥ 4	9 (50.0)	11 (16.4)	0.009 [†]
Distribution			0.001 [†]
Peripheral or sub-pleural	14 (77.8)	41 (61.2)	
airway-dominant	0 (0.0)	23 (34.3)	
Diffuse	4 (22.2)	3 (4.5)	
Lesion patterns			0.165 [†]
GGO	10 (55.6)	24 (35.8)	
Mixed GGO and consolidation	8 (44.4)	29 (43.3)	
Consolidation	0 (0.0)	11 (16.4)	

Centrilobular nodules	0 (0.0)	3 (4.5)
-----------------------	---------	---------

Values are presented as *n* (%). *One patient with confirmed COVID-19 showed minimal change on CT scan. †Fisher exact test. CT: Computed tomography; COVID-19: Coronavirus disease 2019; GGO: Ground-glass opacity.



Supplementary Figure 1: Patient selection diagram. *Information of the two patients with negative SARS-CoV-2 test results for throat swab: one patient and his wife (SARS-CoV-2 positive) both having fever for more than 3 days and typical features of viral pneumonia on CT scan, had contacted a confirmed case in a same flight. The other patient and his father had fever and cough almost at the same time. Both of them had typical findings of viral pneumonia on CT scans, and SARS-CoV-2 was detected in the throat swab from his father subsequently. Moreover, his mother had been confirmed to have COVID-19 10 days ago by positive SARS-CoV-2 testing. COVID-19 could not be confirmed in these two cases but could not be excluded clinically. COVID-19: Coronavirus disease 2019; SARS-CoV-2: Severe acute respiratory syndrome coronavirus 2; CT: Computed tomography.



Supplementary Figure 2: CT findings in 4 patients with confirmed COVID-19. (A) Patchy GGO distributed in subpleural area in left lower lung. (B) A round-like, mixed GGO and consolidation lesion (with reversed halo sign) in subpleural area in right lower lung. (C) Multiple patchy GGO in bilateral lungs, mainly peripheral distribution. (D) Diffuse lesions in bilateral lungs (severe case). CT: Computed tomography; COVID-19: Coronavirus disease 2019; GGO: Ground glass opacity.