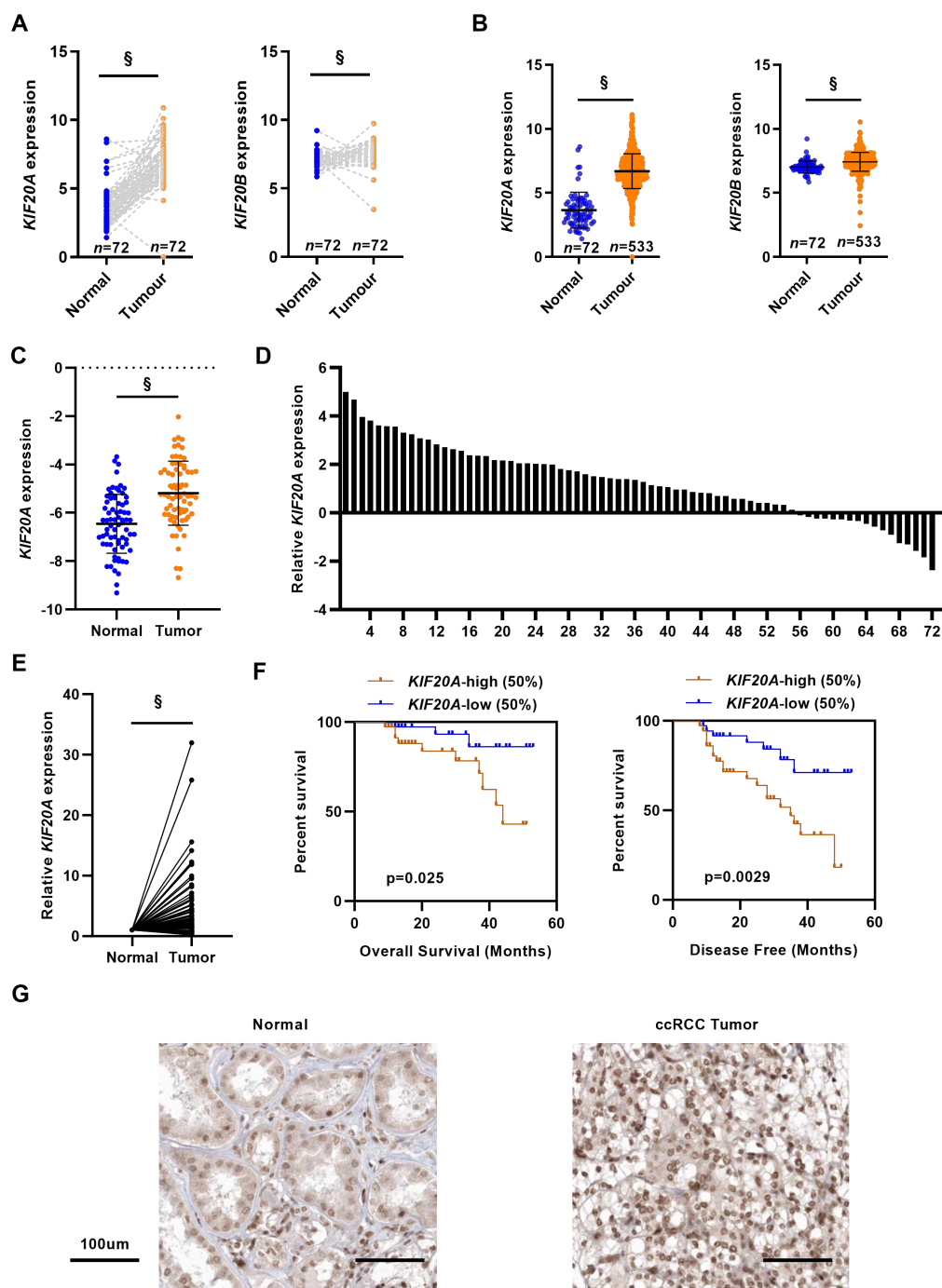
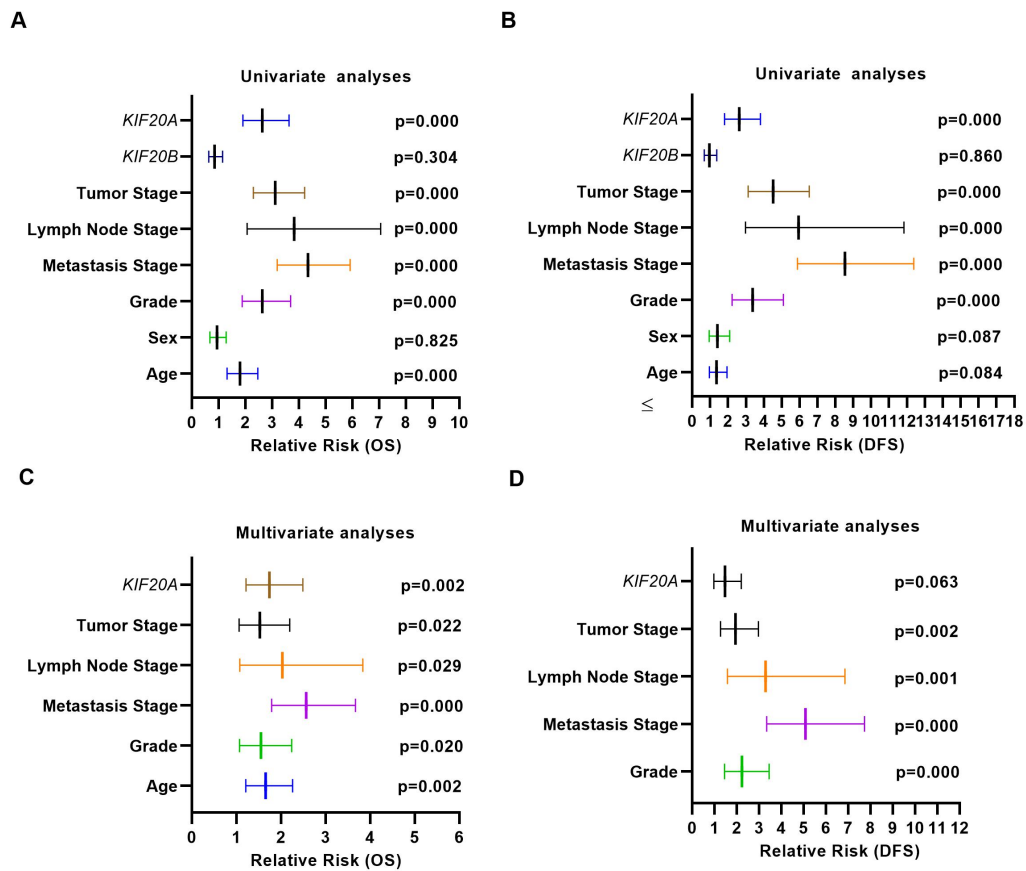


Supplementary Figure



Supplementary Figure 1. Kinesin family member 20A is upregulated in ccRCC cancer tissues. (A) and (B) *KIF20A* and *KIF20B* expression in TCGA-KIRC (C) Gene expression levels of *KIF20A* in renal cancer tissues. (D) and (E) Relative *KIF20A* expression was upregulated in renal cancer tissues. (F) Kaplan–Meier curves of OS and DFS in ccRCC with different expression of *KIF20A*. (G) IHC analyses of *KIF20A* expression in ccRCC tissues and paracancer tissues. ccRCC: clear cell renal cell carcinoma; TCGA-KIRC: The Cancer Genome Atlas kidney renal clear cell carcinoma; *KIF20A*: Kinesin family member 20A; *KIF20B*: Kinesin family member 20B; OS: overall survival; DFS: disease–free survival; IHC: immunohistochemistry. §

P<0.0001. Scale bar: 100um.



Supplementary Figure 2. Univariate analysis and multivariate analysis results of ccRCC with *KIF20A* and *KIF20B* expression. (A) and (B) Univariate analysis showed that *KIF20A* but not *KIF20B* were related to OS and DFS. (C) and (D) Multivariate analysis showed that *KIF20A* but not *KIF20B* were related to OS and DFS. ccRCC: clear cell renal cell carcinoma; *KIF20A*: Kinesin family member 20A; *KIF20B*: Kinesin family member 20B; OS: overall survival; DFS: disease-free survival.