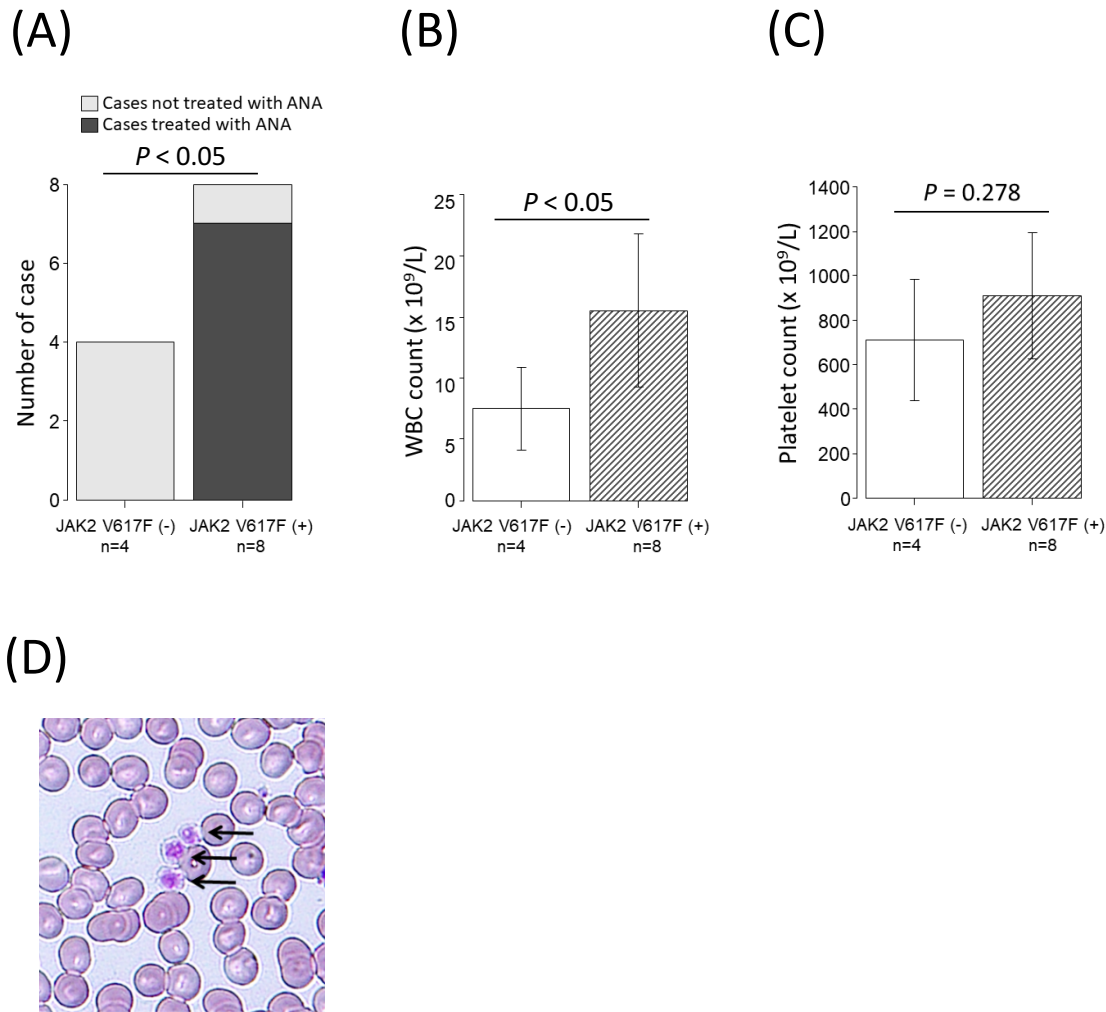


Supplemental Figure 1



(A) The percentage of administration of ANA. Patients were stratified into a *JAK2* V617F-positive group and a *JAK2* V617F-negative group. ANA, anagrelide.

(B) WBC count at diagnosis of ET. Patients were stratified into a *JAK2* V617F-positive group and a *JAK2* V617F-negative group. WBC, white blood cell.

(C) Platelet count at diagnosis of ET. Patients were stratified into a *JAK2* V617F-positive group and a *JAK2* V617F-negative group.

(D) Peripheral blood smear of a patient after initiation of ANA treatment. The arrows indicate giant platelets.