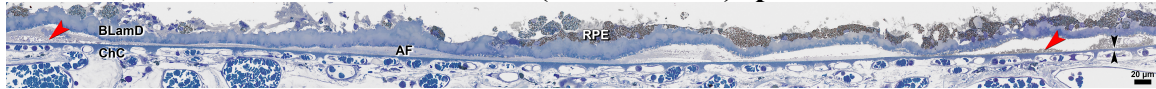


**Supplementary Figure 3. Continuity of avascular fibrosis (AF) with soft drusen material, in the sub-RPE-basal lamina (sub-RPE-BL) space.**



Epoxy resin sections of the osmium tannic acid paraphenylenediamine-post-fixed specimen, stained with toluidine blue. RPE, retinal pigment epithelium; BLamD, basal laminar deposit; Bruch's membrane, black arrowheads; ChC, choriocapillaris. Avascular fibrosis is present in the sub-RPE-BL space inside and around the atrophic area, and is continuous with basal linear deposit (red arrowheads).