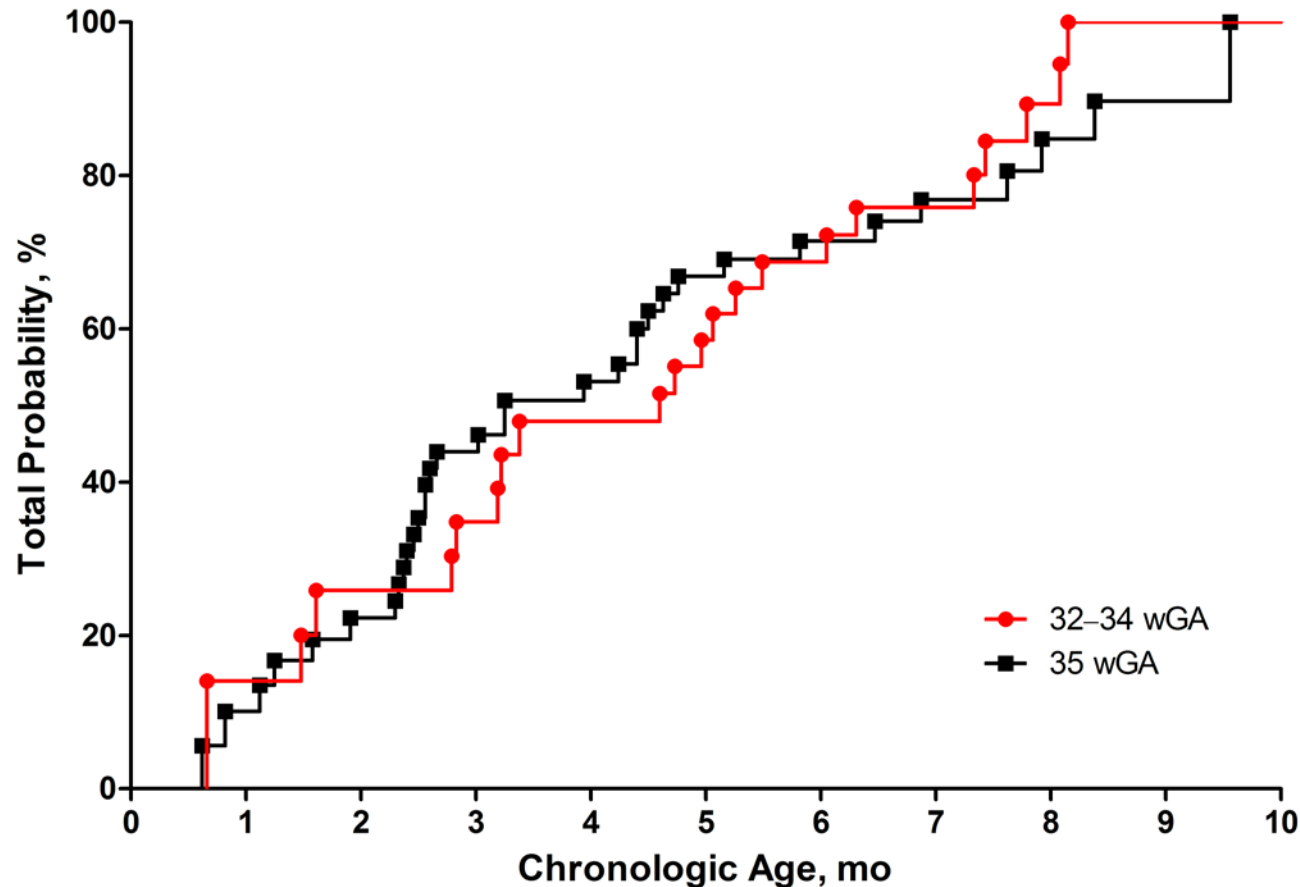


Supplemental Digital Content 3. Kaplan-Meier Curve of the Distribution of Total Probability of RSV Hospitalization During November–March as a Function of Chronologic Age



RSV=respiratory syncytial virus; wGA=weeks gestational age. Each dot represents an RSV hospitalization. RSV hospitalization rates (95% CI) per 100 infant-seasons for infants 32–34 wGA were 6.6 (2.2, 15.5) for chronologic age 0 to <3 months, 6.0 (2.7, 11.4) for chronologic age 3 to <6 months, and 3.8 (1.5, 7.8) for chronologic age ≥ 6 months. RSV hospitalization rates (95% CI) per 100 infant-seasons for infants 35 wGA were 15.3 (8.9, 24.5) for chronologic age 0 to <3 months, 6.9 (3.7, 11.9) for chronologic age 3 to <6 months, and 3.1 (1.1, 6.8) for chronologic age ≥ 6 months.