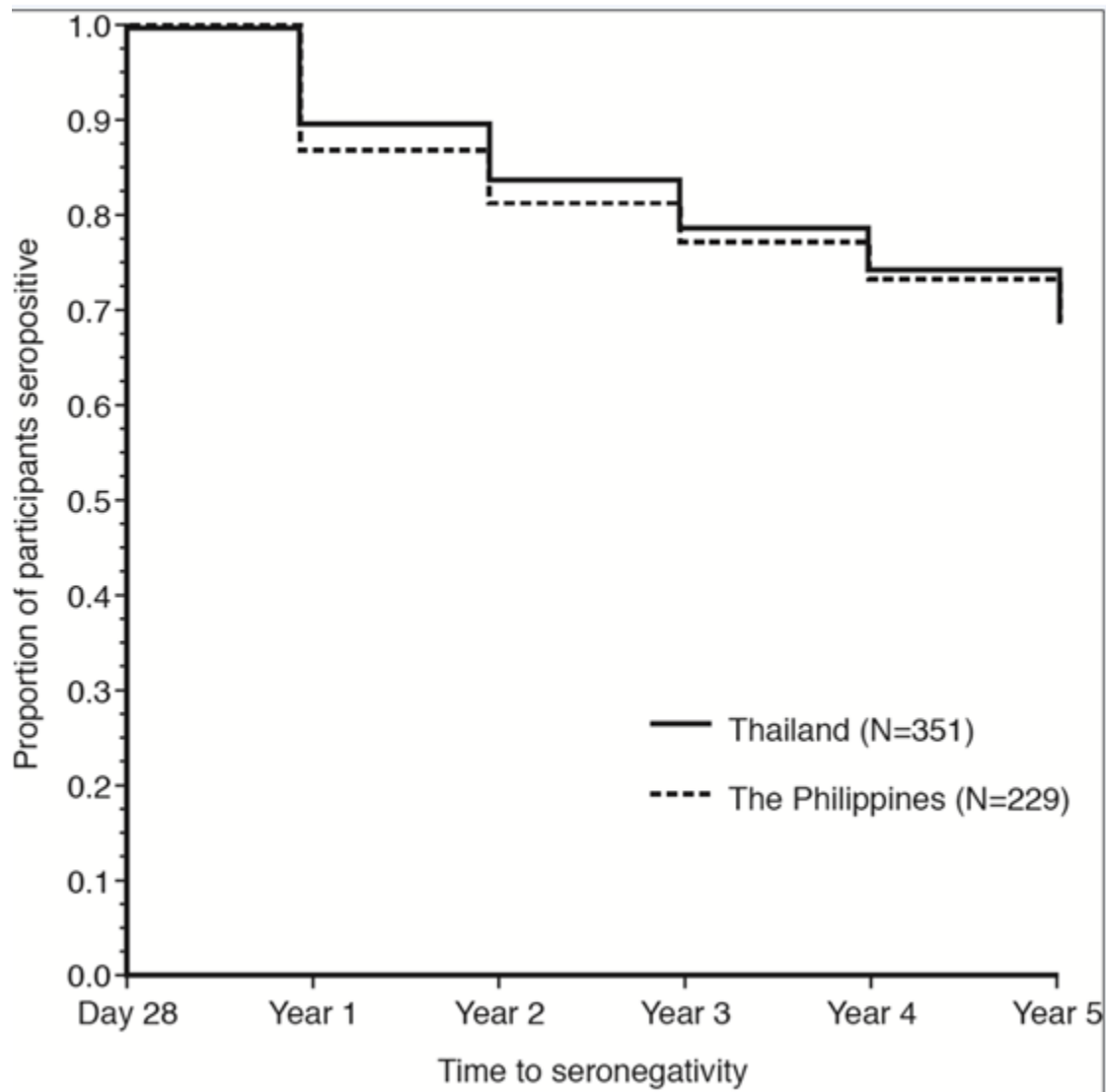


Figure 3.



Footnote to figure:

The Kaplan-Meier analysis was used to estimate the proportion of subjects maintaining a seropositivity level over time during the 5-year long-term follow-up. The time of maintenance of seropositivity was calculated for subjects with a 28-day post-vaccination titer of ≥ 10 1/dil, and defined as the theoretical visit (Year 1, Year 2, etc.) of the last blood sample at which JE-CV virus PRNT₅₀ neutralizing antibody levels were ≥ 10 1/dil. 'Seronegative' subjects were considered as having titers < 10 , 1/dil up to the end of the observation period from the first yearly visit where titers < 10 were observed. Therefore, the Kaplan-Meier analysis did not need to consider sensitivity and was based on the FAS.

JE-CV, Japanese encephalitis chimeric virus vaccine; PRNT₅₀, 50% plaque reduction neutralization test