

TABLE E-1 Life Tables for All Failures for Any Reason and Aseptic Failures

Time Since Surgery	Number At Start	Number Withdrawn	Number At Risk	Number Of Revisions	Cumulative Proportion Surviving
All failures (revision for any reason)					
0-1	523	16	515	1	1.000
1-2	506	11	500.5	1	0.998
2-3	494	12	488	2	0.994
3-4	480	28	466	2	0.990
4-5	450	15	442.5	1	0.987
5-6	434	22	423	1	0.985
6-7	411	21	400.5	2	0.980
7-8	388	21	377.5	1	0.977
8-9	366	26	353	2	0.972
9-10	338	21	327.5	1	0.969
10-11	316	100	266	2	0.961
11-12	214	105	161.5	1	0.955
12-13	108	89	63.5	1	0.939
13-14	18	17	9.5	0	0.939
14-15	1	1	0.5	0	0.939
Aseptic failures					
0-1	523	16	515	1	1.0000
1-2	506	11	500.5	1	0.9980
2-3	494	14	487	0	0.9980
3-4	480	30	465	0	0.9980
4-5	450	15	442.5	1	0.9957
5-6	434	22	423	1	0.9934
6-7	411	22	400	1	0.9909
7-8	388	21	377.5	1	0.9882
8-9	366	26	353	2	0.9826
9-10	338	21	327.5	1	0.9795
10-11	316	100	266	2	0.9720
11-12	214	106	161	0	0.9720
12-13	108	89	63.5	1	0.9562
13-14	18	17	9.5	0	0.9562
14-15	1	1	0.5	0	0.9562

TABLE E-2. Quality of Life Related to the Knee and General Improvement in Quality of Life for Patients Who Still Had Primary Total Knee Prosthesis After Ten Years

Question and Responses	Percentage of Patients
How often are you aware of your knee problem?	
Never	32
Monthly	12
Weekly	5
Daily	23
Constantly	9
(no response)	19
Have you modified your lifestyle to avoid potentially damaging activities to your knee?	
Not at all	21
Mildly	24
Moderately	25
Severely	5
Totally	6
(no response)	19
How much are you troubled with lack of confidence in your knee?	
Not at all	41
Mildly	20
Moderately	10
Severely	9
Totally	1
(no response)	19
In general, how much difficulty do you have with your knee?	
None	33
Mild	24
Moderate	17
Severe	7
Extreme	1
(no response)	18
How much did the knee replacement surgery improve the quality of your life?	
More than I dreamed possible	22
Great improvement	52
Moderate improvement	7
Little improvement	3.5
No change	1.5
Worse quality of life	0.5
(no response)	13.5

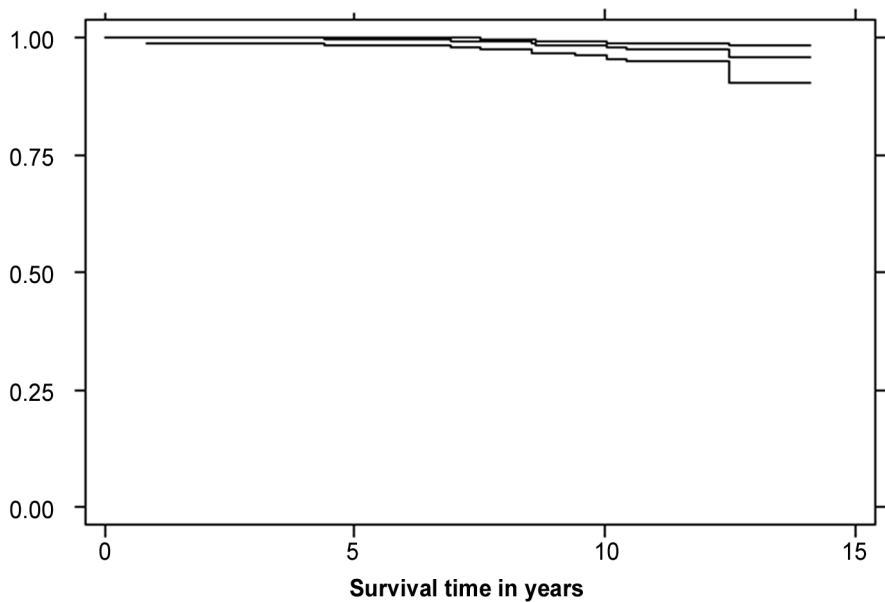


Fig. E-1
Kaplan-Meier survival curve (and 95% confidence interval) with revision for aseptic failure as the end point.

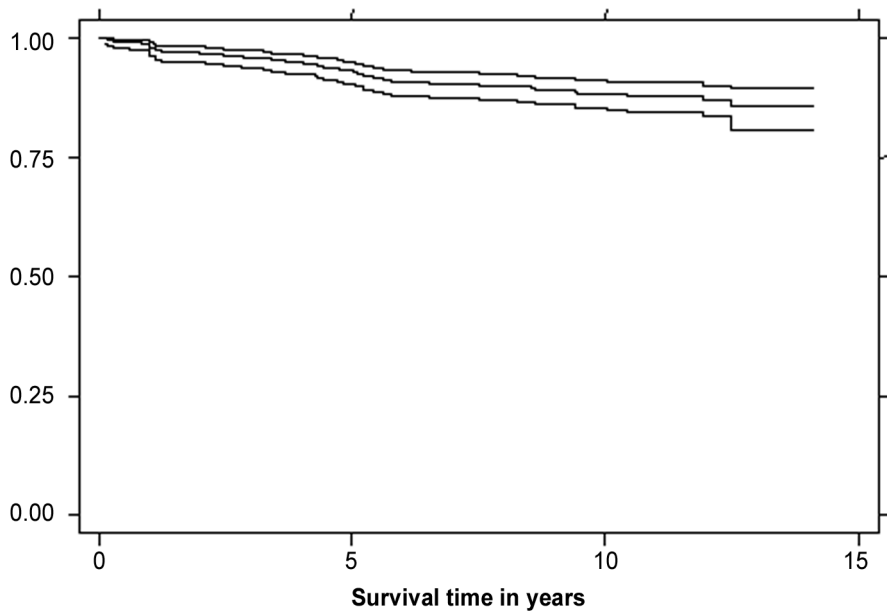


Fig. E-2

Kaplan-Meier survival curve (and 95% confidence interval) for the worst-case scenario, with all patients lost to follow-up at ten years and all revisions included as failures.