



Fig. E-1A

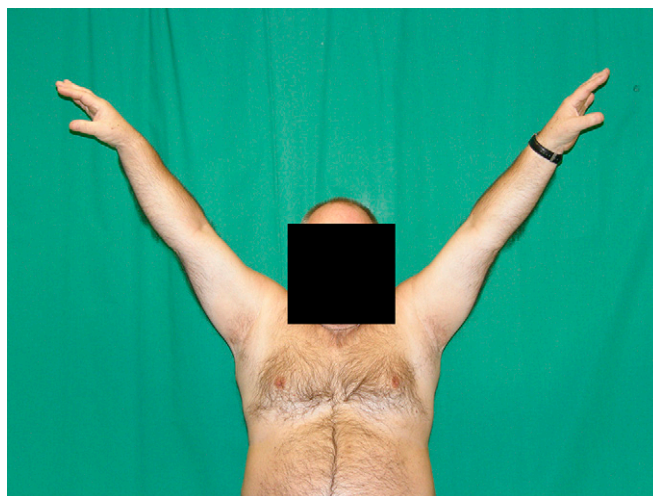


Fig. E-1B

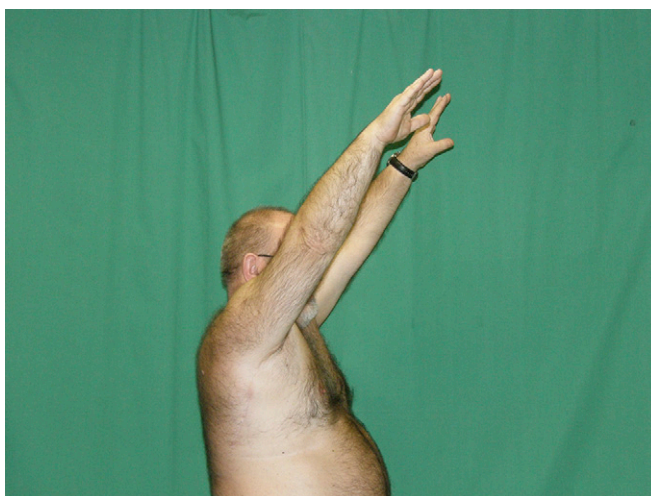


Fig. E-1C

Figs. E-1A through E-1E Case 1. Photographs and radiographs made nine and ten years after bilateral latissimus dorsi transfer. **Fig. E-1A** The patient demonstrates maximum active external rotation in abduction. **Fig. E-1B** The patient demonstrates maximum abduction. **Fig. E-1C** The patient demonstrates maximum forward flexion.



Fig. E-1D



Fig. E-1E

Figs. E-1D and E-1E Right (**Fig. E-1D**) and left (**Fig. E-1E**) anteroposterior radiographs.



Fig. E-2A



Fig. E-2B



Fig. E-2C

Figs. E-2A, E-2B, and E-2C Case 2. Radiographs of a patient with left latissimus dorsi transfer. **Fig. E-2A** After two years. **Fig. E-2B** After five years. **Fig. E-2C** After eleven years.