

Fig. E-1A

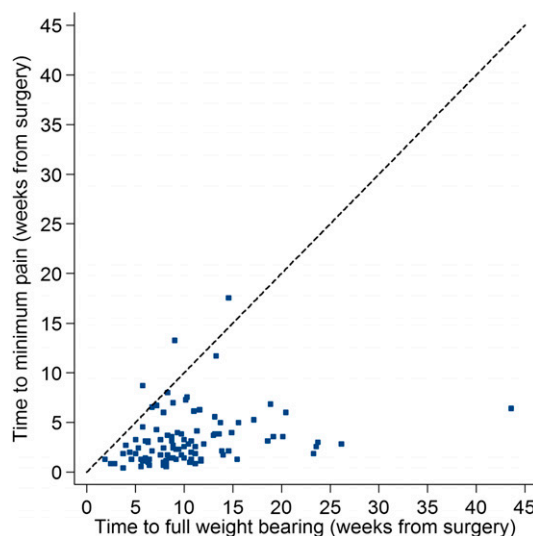


Fig. E-1B

**Figs. E-1A and E-1B** Scatter plot of median time to full weight-bearing versus median time to minimal pain for each of the eight contributing study centers (intent-to-treat population) (**Fig. E-1A**) and scatter plot of time to full weight-bearing versus time to minimal pain for patients (**Fig. E-1B**). The dotted line represents equal time to both full weight-bearing and minimum pain.

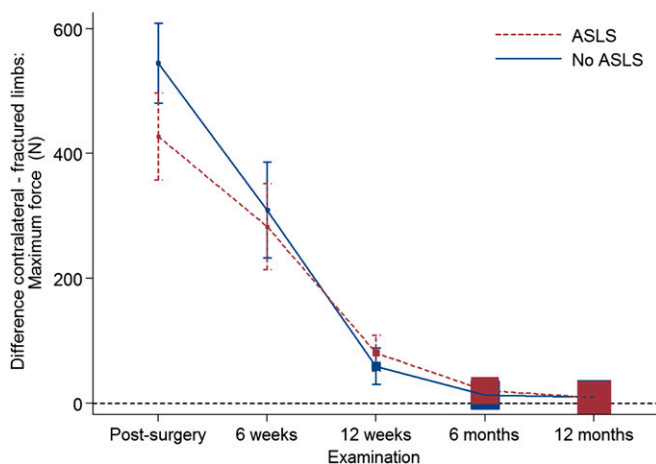


Fig. E-2A

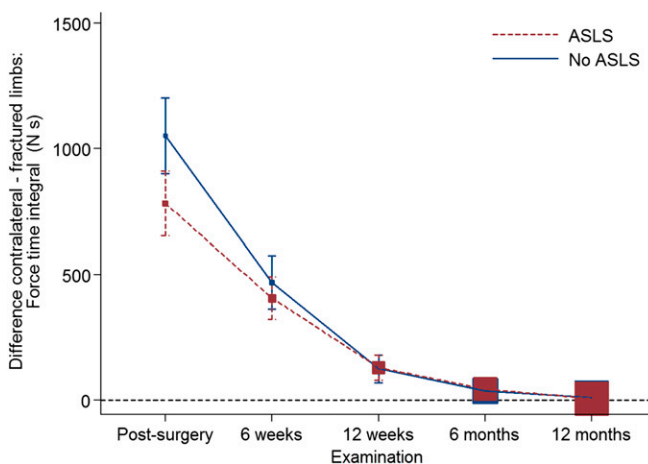


Fig. E-2B

**Figs. E-2A and E-2B** Charts of maximum force (**Fig. E-2A**) and force-time integral during gait testing (**Fig. E-2B**) for both groups over the postoperative time period. Values were converted to the difference in measurements between the injured limbs and the intact contralateral limbs. The I-bars represent the 95% confidence intervals. ASLS = Angular Stable Locking System.

**TABLE E-1 Patient Demographics and Baseline Characteristics\***

Characteristic	ASLS Group (N = 75)		Control Group (N = 67)	
	No. of Patients (%)	Mean (SD)	No. of Patients (%)	Mean (SD)
Age (yr)	75	46.5 ± 14.5	67	44.4 ± 13.5
Sex	75		67	
Female	27 (36)		25 (37)	
Male	48 (64)		42 (63)	
Height (cm)	74	175 ± 9	67	175 ± 9
Weight (kg)	68	81.5 ± 20.6	63	81.0 ± 16.2
BMI (kg/cm <sup>2</sup> )	67	26.0 ± 4.3	63	26.2 ± 4.0
Categorized BMI (kg/cm <sup>2</sup> )	67		63	
<18.5	2 (3)		0 (0)	
18.5 to <25	25 (37)		24 (38)	
25 to <30	30 (45)		28 (44)	
≥30	10 (15)		11 (17)	
Smoking status	74		67	
Nonsmoker	41 (55)		47 (70)	
Smoker	33 (45)		20 (30)	
Cigarettes per day		19.2 ± 10.3		19.1 ± 10.5
Preop. residential status: independent without support	72 (100)		67 (100)	
Fracture side	74		67	
Left	34 (46)		30 (45)	
Right	40 (54)		37 (55)	
Fracture classification	75		67	
AO/OTA 42-A1	39 (52)		33 (49)	
AO/OTA 42-A2	9 (12)		5 (7)	
AO/OTA 42-A3	10 (13)		4 (6)	
AO/OTA 42-B1	3 (4)		9 (13)	
AO/OTA 42-B2	4 (5)		5 (7)	
AO/OTA 42-B3	0 (0)		1 (1)	
AO/OTA 42-C1	5 (7)		3 (4)	
AO/OTA 42-C2	1 (1)		0 (0)	
AO/OTA 42-C3	1 (1)		2 (3)	
AO/OTA 43-A1	0 (0)		3 (4)	
AO/OTA 43-A2	1 (1)		0 (0)	
AO/OTA 43-A3	2 (3)		0 (0)	
No preoperative image	0 (0)		2 (3)	
Defect fracture	74		67	
No	59 (80)		50 (75)	
Yes	15 (20)		17 (25)	
Fracture type at baseline	74		67	
Closed	56 (76)		56 (84)	
Open	18 (24)		11 (16)	

*continued*

**TABLE E-1 (continued)**

Characteristic	ASLS Group (N = 75)		Control Group (N = 67)	
	No. of Patients (%)	Mean (SD)	No. of Patients (%)	Mean (SD)
Fibular fracture status	74		67	
No fibular fracture	3 (4)		5 (7)	
Nonfixed fibular fracture	29 (39)		25 (37)	
Nonfixed fibular fracture at same level as tibial fracture	15 (20)		13 (19)	
Fixed fibular fracture	27 (36)		24 (36)	
Fibular fracture on same side as tibial fracture	74		67	
No	3 (4)		5 (7)	
Yes	71 (96)		62 (93)	
Fibular fracture at same level as tibial fracture	71		62	
No	35 (49)		28 (45)	
Yes	36 (51)		34 (55)	
*Fracture classification was based on a blinded review by the principal clinical investigator (D.H.). ASLS = Angular Stable Locking System, SD = standard deviation, and BMI = body mass index.				