



Fig. E-1

An immediate postoperative posteroanterior radiograph of an animal treated with long double pedicle screws in the right pedicles from T7 to T14.

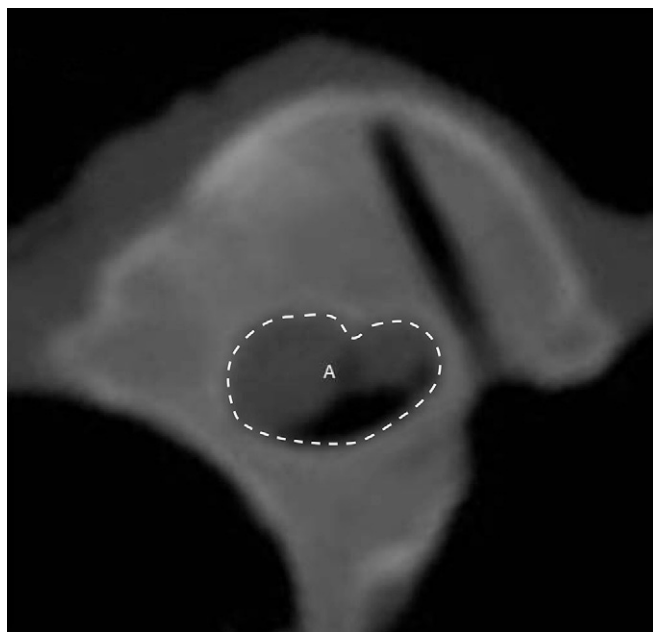


Fig. E-2

Axial CT image of a vertebra showing the measurement of the spinal canal area (A) in the posterior-approach long-screw subgroup. The long pedicle screw (shadow) was on the right side and crossed the neurocentral synchondrosis.