



Fig. E-1A

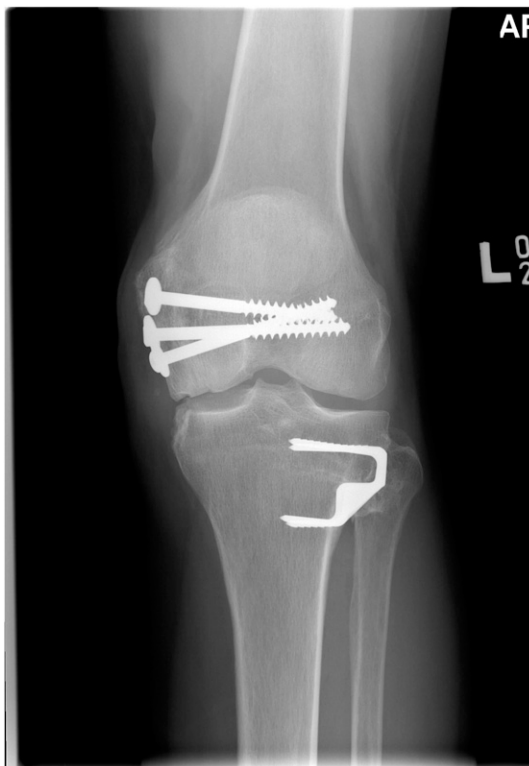


Fig. E-1B



Fig. E-1C

**Figs. E-1A, E-1B, and E-1C.** Radiographs of a patient treated with a lateral femoral osteochondral allograft fixed by three screws and additional high tibial closing-wedge osteotomy. **Fig. E-1A** Preoperative radiograph. **Fig. E-1B** Early postoperative radiograph. **Fig. E-1C** Late postoperative radiograph (at thirteen years).