

## Appendix

Proximal tibial osteotomy was defined by ICD-9-CM code 77.27. Physician reimbursement fell under CPT code 27457, and hospital fees were determined using DRG 219 from 1993 to 2007 and 494 from 2008 to present. Data were compiled from the Nationwide Inpatient Sample<sup>1</sup>, CMS<sup>16</sup>, and the Federal Register<sup>15</sup> and reimbursement rate calculations are analogous to those described for total knee arthroplasty and total hip arthroplasty in the Materials and Methods section. ■

### A. Procedure Volume

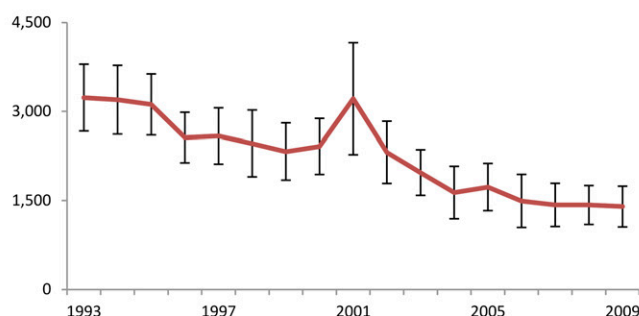


Fig. E-1

Annual U.S. volume of proximal tibial osteotomy (PTO), with the error bars representing 95% confidence intervals (**Fig. E-1A**), and a comparison of physician and hospital reimbursement for PTO, total knee arthroplasty (TKA), and total hip arthroplasty (THA) (**Fig. E-1B**).

### B. Physician and Hospital Reimbursement

