

Fig. E-1
Box plots demonstrate the distributions of the AOFAS depending on revision outcome (Groups 1 and 2).

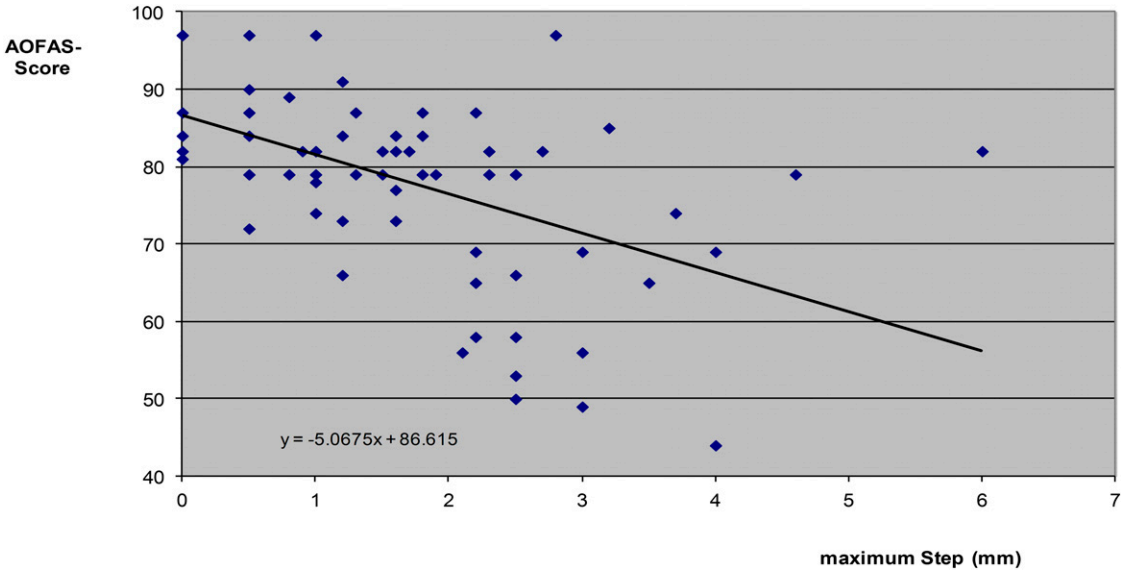


Fig. E-2
Point cloud with regression line for the correlation between the maximum residual step-off for each patient and the AOFAS score (Spearman correlation, $r = -0.543$). Data points are included for all patients, but not all points are visible as the points overlap for patients who had the same results.

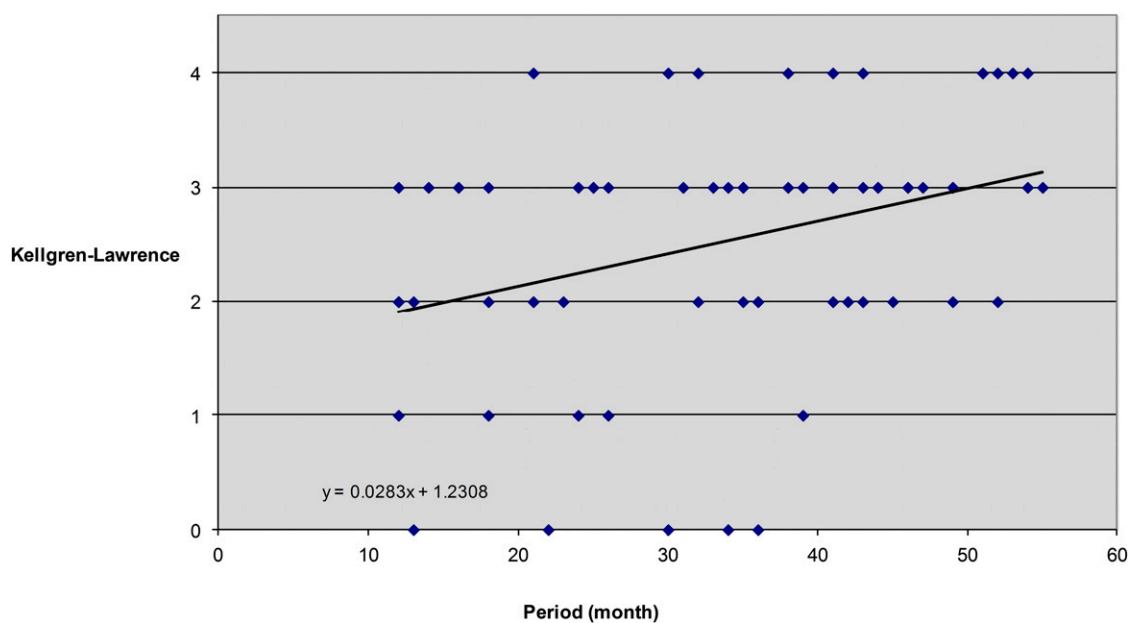


Fig. E-3
 Representation of the relationship between the follow-up interval and the degree of osteoarthritis according to the Kellgren-Lawrence grade. Data points are included for all patients, but not all are visible as the points overlap for patients who had the same results.

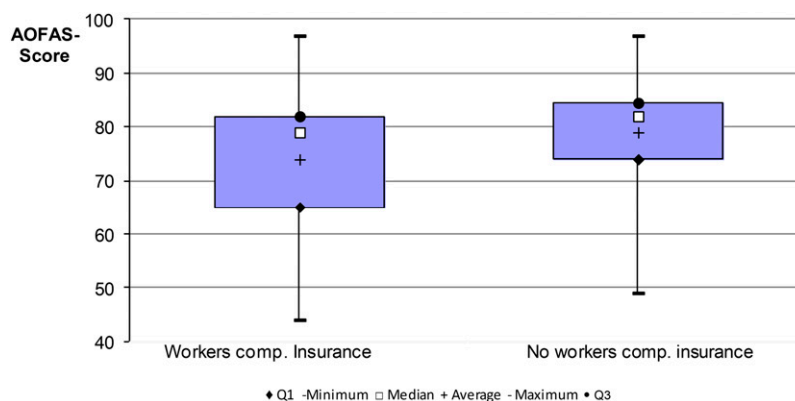


Fig. E-4
 Distribution of AOFAS scores in patients with and without Workers' Compensation insurance.

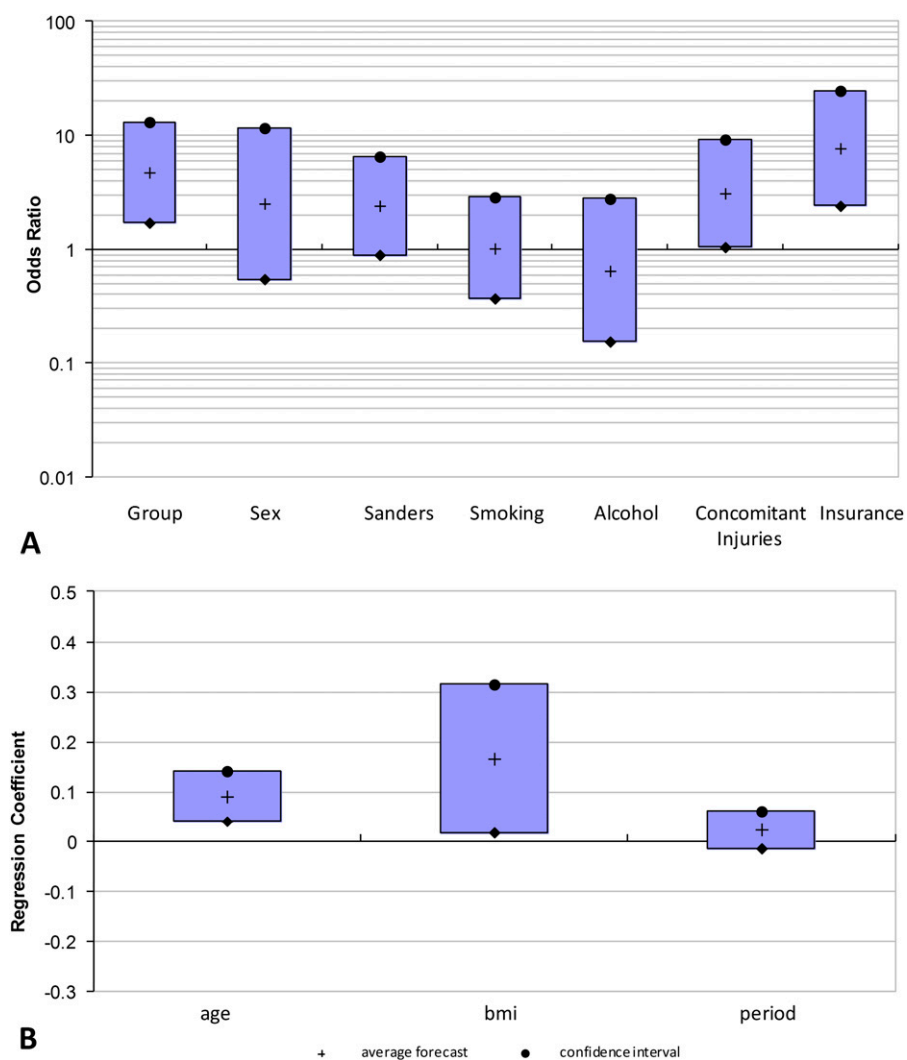


Fig. E-5

Graphic representation of the results of the ordinal logistic regression. Boxes show the 95% confidence interval of the estimated influence. Box plots represent the odds ratio of the influence of the binary coded variables on the degree of osteoarthritis (logarithmic scaling) (**Fig. E-5A**), and the corresponding representation shows the regression coefficients of the metric-scaled variables (**Fig. E-5B**). bmi = body mass index.

| TABLE E-1 Baseline Characteristics of the Seventy-seven Patients with a Calcaneal Fracture in the Study Cohort | |
|---|---------------------------|
| Characteristic | Findings |
| Age* (yr) | 44.39 ± 2.66 (15-74) |
| Height* (cm) | 175.95 ± 8.42 (152-194) |
| Weight* (kg) | 80.36 ± 12.91 (50-120) |
| BMI* | 25.95 ± 3.7 (16.98-34.72) |
| Risk factors (none/one/two/three/four) (no. of patients) | 27/26/22/1/1 |
| Physical work (yes/no) (no. of patients) | 40/37 |
| Workers' Compensation insurance (yes/no) (no. of patients) | 29/48 |
| Concomitant injuries (grade 1/2/3) (no. of patients) | 56/20/1 |
| *The values are given as the mean and the standard deviation, with the range in parentheses. BMI = body mass index. | |