

Fig. E-1
Maximum intraoperative balloon pressure. VBS = vertebral body stenting and BKP = balloon kyphoplasty. The bottom and top of the boxes indicated the first and third quartiles, the bars indicate the range, and the horizontal bars within the boxes indicate the median.

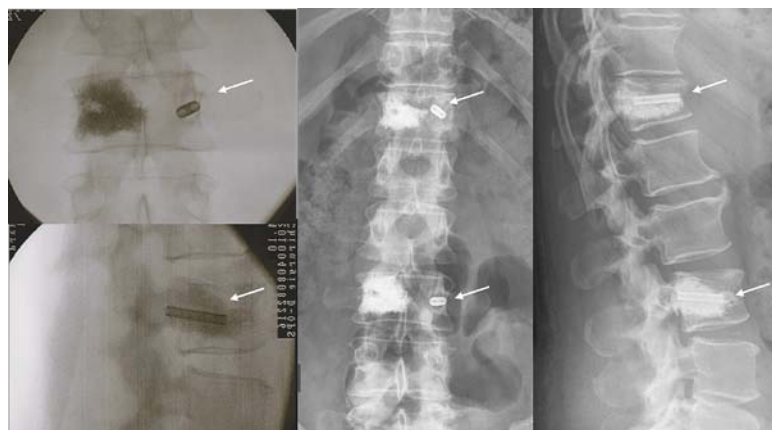


Fig. E-2
Failure of stent opening (arrows).

TABLE E-1 Patients' Baseline Characteristics

	Balloon Kyphoplasty	Vertebral Body Stenting	P Value	Total
No. of patients	32	33		65
Age* (yr)	66 ± 14	73 ± 11	0.062	70 ± 13
Sex (F:M)	19:13	21:12	0.919	40:25
No. of levels	50	50		100
Location of fracture†			0.095	
Thoracic	19 (38%)	7 (14%)		26 (26%)
Thoracolumbar	19 (38%)	23 (46%)		42 (42%)
Lumbar	12 (24%)	20 (40%)		32 (32%)
Fracture†‡			0.534	
A1.1	12 (24%)	18 (36%)		30 (30%)
A1.2	13 (26%)	10 (20%)		23 (23%)
A1.3	9 (18%)	10 (20%)		19 (19%)
A3.1	16 (32%)	12 (24%)		28 (28%)

*Data are expressed as the mean and standard deviation. †Data are expressed as the number with the percentage in parentheses.

‡Fractures were classified according to the AO classification²⁰.

TABLE E-2 Number of Levels Treated Per Patient

Levels per Patient	Balloon Kyphoplasty*	Vertebral Body Stenting*	Total
1	18 (18)	23 (23)	41 (41)
2	12 (24)	5 (10)	17 (34)
3	1 (3)	3 (9)	4 (12)
4	0 (0)	2 (8)	2 (8)
5	1 (5)	0 (0)	1 (5)

*Data are expressed as the number of patients with the number of levels in parentheses.