

Fig. E-1
Kaplan-Meier survival estimates, with repeat revision of the entire cup for aseptic loosening as the end point, according to the design of the uncemented acetabular component used during revision total hip arthroplasty (THA). HG = Harris-Galante, PCA = Porous-Coated Anatomic, and PSL = Peripheral Self Locking.

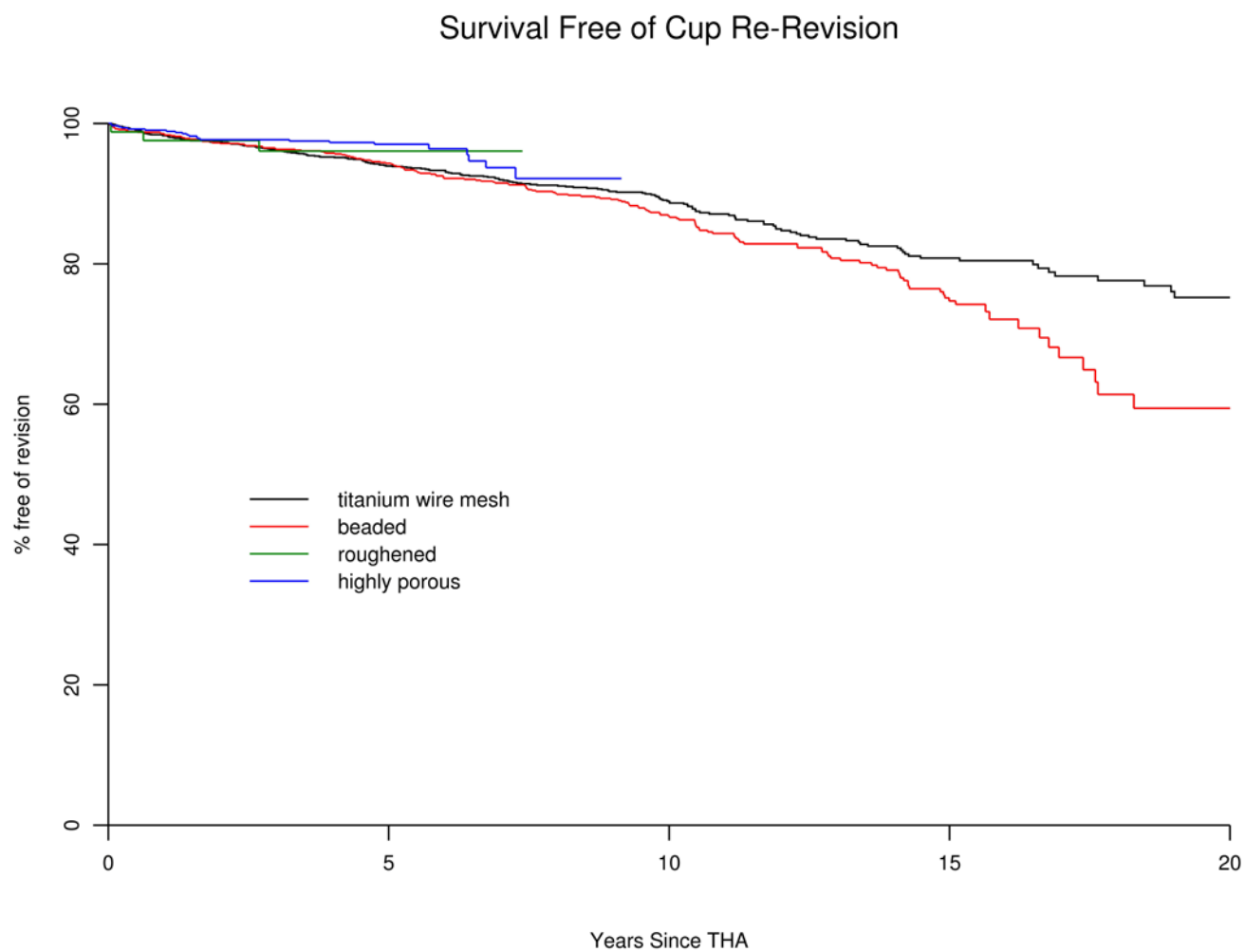


Fig. E-2
Kaplan-Meier survival estimates, with repeat revision of the entire cup for any reason as the end point, according to the ingrowth surface used during revision total hip arthroplasty (THA).

TABLE E-1 Catalog Numbers of Acetabular Designs Included in the Study

Acetabular Shell/Polyethylene Liner*	Ingrowth Surface Type	Manufacturer	Catalog Numbers
HG-I/conventional	Titanium wire mesh	Zimmer (Warsaw, IN)	6522-xx, 6526-xx, 6528-xx, 6532-xx
HG-II/conventional	Titanium wire mesh	Zimmer (Warsaw, IN)	6610-xx-xx
PCA/conventional	Beaded	Howmedica (Rutherford, NJ)	6287-3-xxx, 6287-5-xxx, 6289-3-xxx, 6289-5-xxx
Omnifit PSL/conventional	Beaded	Osteonics (Allenhurst, NJ)	2017-00xx, S-1478-HAxx
Spherical/conventional	Beaded	Osteonics (Allenhurst, NJ)	2016-00xx
Trilogy/conventional	Titanium wire mesh	Zimmer (Warsaw, IN)	6200-xx-xx
Trilogy/cross-linked	Titanium wire mesh	Zimmer (Warsaw, IN)	6200-xx-xx
Pinnacle/cross-linked	Roughened	DePuy Orthopedics (Warsaw, IN)	1217-10-xxx, 1217-20-xxx
TM Revision Shell/conventional	Highly porous tantalum (trabecular metal)	Implex (Allendale, NJ)	00-7000-0xx-20, 00-7000-0xx-50, 02-210-00xxx
TM Revision Shell/cross-linked	Highly porous tantalum (trabecular metal)	Implex (Allendale, NJ)	00-7000-0xx-20, 00-7000-0xx-50, 02-210-00xxx

*HG = Harris-Galante, PCA = Porous-Coated Anatomic, PSL = Peripheral Self Locking, and TM = Trabecular Metal.