

Fig. E-1

Chordoma-specific survival for patients with cranial disease by surgical intervention: 1 (red) = local resection, 2 (green) = wide resection, 3 (brown) = not specified, 4 (blue) = no surgery, and 5 (purple) = unknown; $p < 0.0001$.

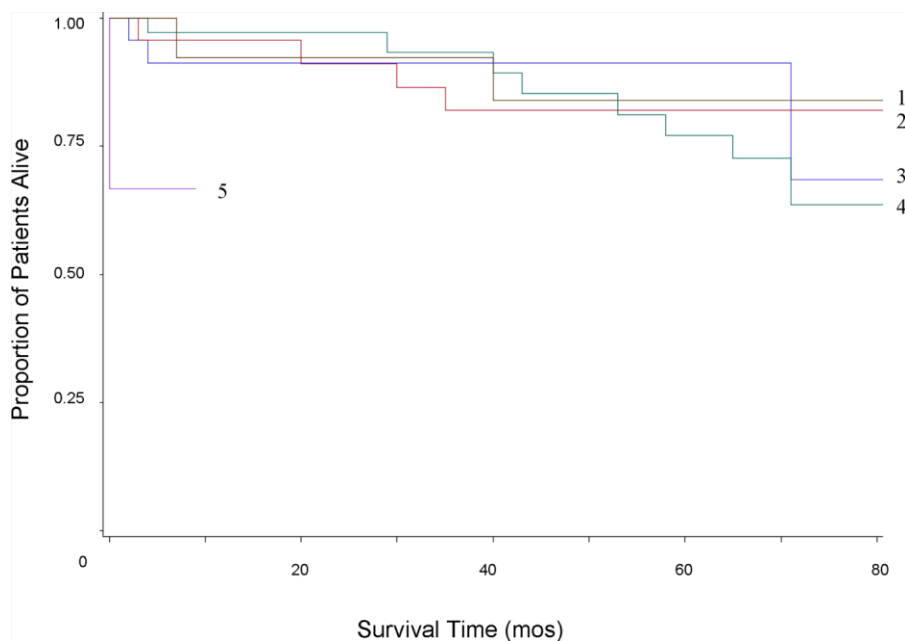


Fig. E-2

Chordoma-specific survival for patients with pelvic and/or sacral disease by surgical intervention: 1 (brown) = not specified, 2 (red) = local resection, 3 (blue) = no surgery, 4 (green) = wide resection, and 5 (purple) = unknown; $p = 0.023$.

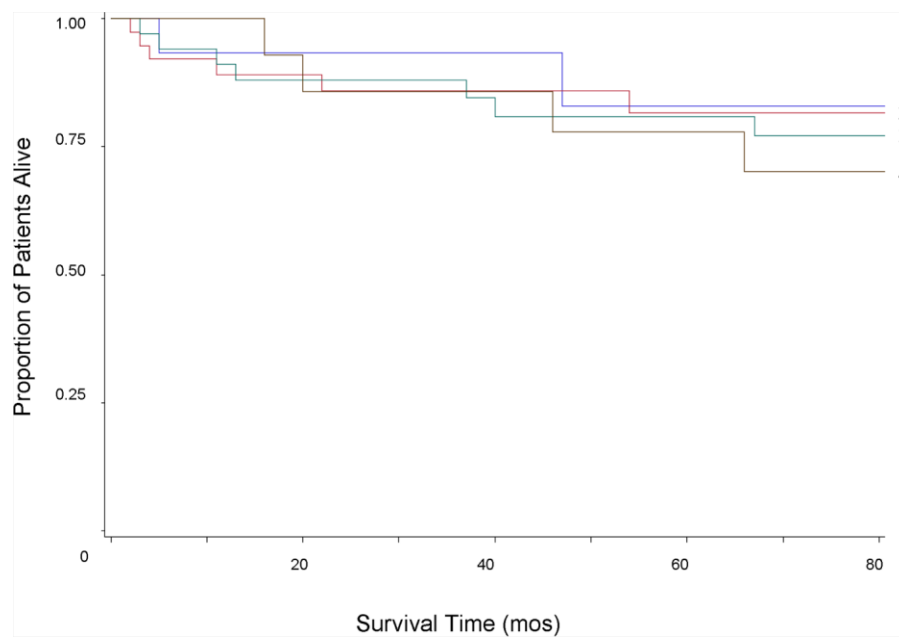


Fig. E-3
Chordoma-specific survival for patients with spinal disease by surgical intervention: 1 (blue) = no surgery, 2 (red) = local resection, 3 (green) = wide resection, and 4 (brown) = not specified; $p = 0.89$.