



Fig. E-1  
T1-weighted coronal magnetic resonance image showing the data point created at the popliteus insertion.

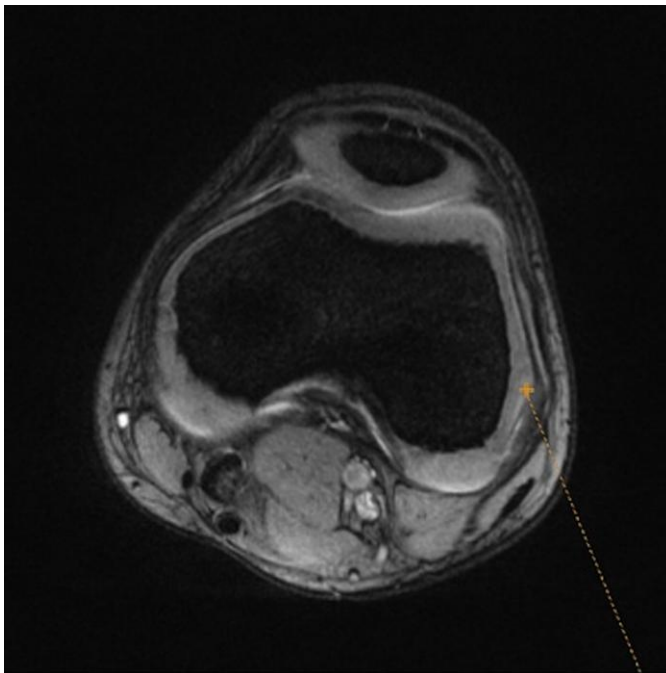


Fig. E-2  
T1-weighted axial magnetic resonance image showing the data point created at the lateral epicondyle.



Fig. E-3  
T1-weighted sagittal magnetic resonance image showing the data point created at the popliteus insertion.



Fig. E-4  
T1-weighted sagittal magnetic resonance image showing the data point created at the central portion of the insertion, or footprint, of the anterior cruciate ligament.