

Fig. E-1

Chart illustrating the top five diagnoses leading to primary total knee arthroplasty.

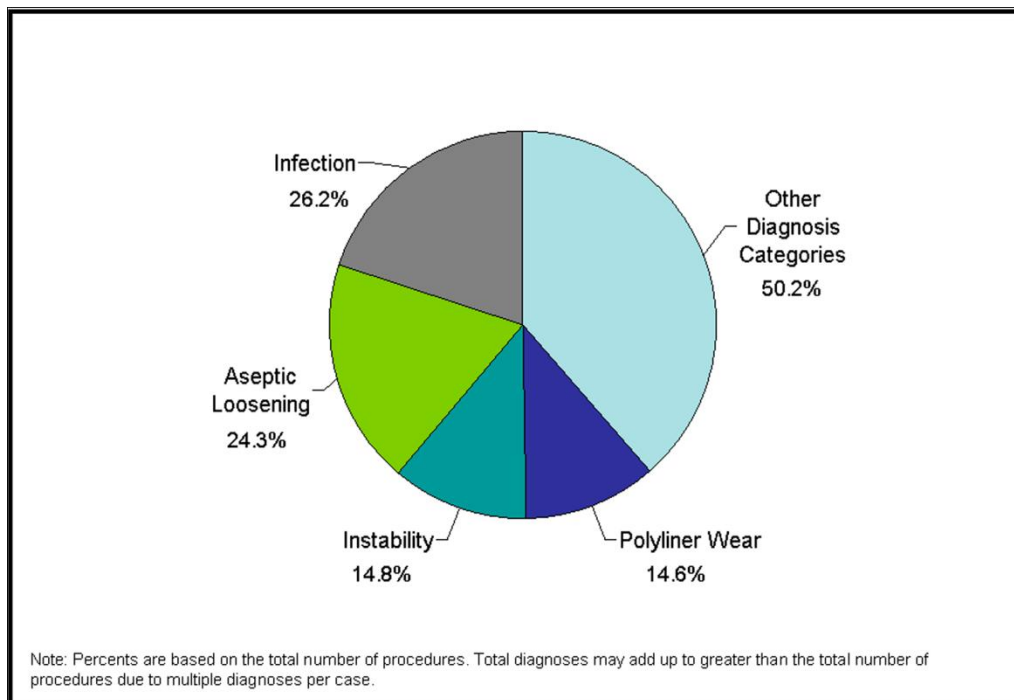


Fig. E-2

Chart illustrating the top four diagnoses leading to revision total knee arthroplasty.

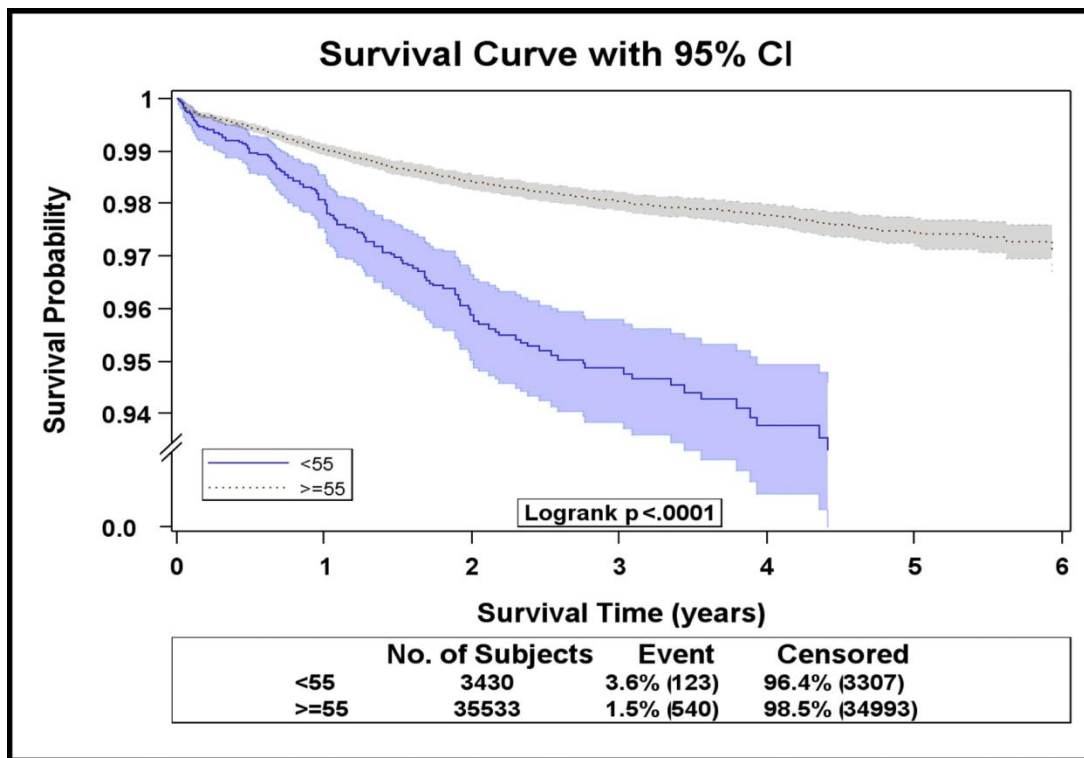


Fig. E-3

Kaplan-Meier survival curve showing implant survival after total knee arthroplasty according to age category. CI = confidence interval.

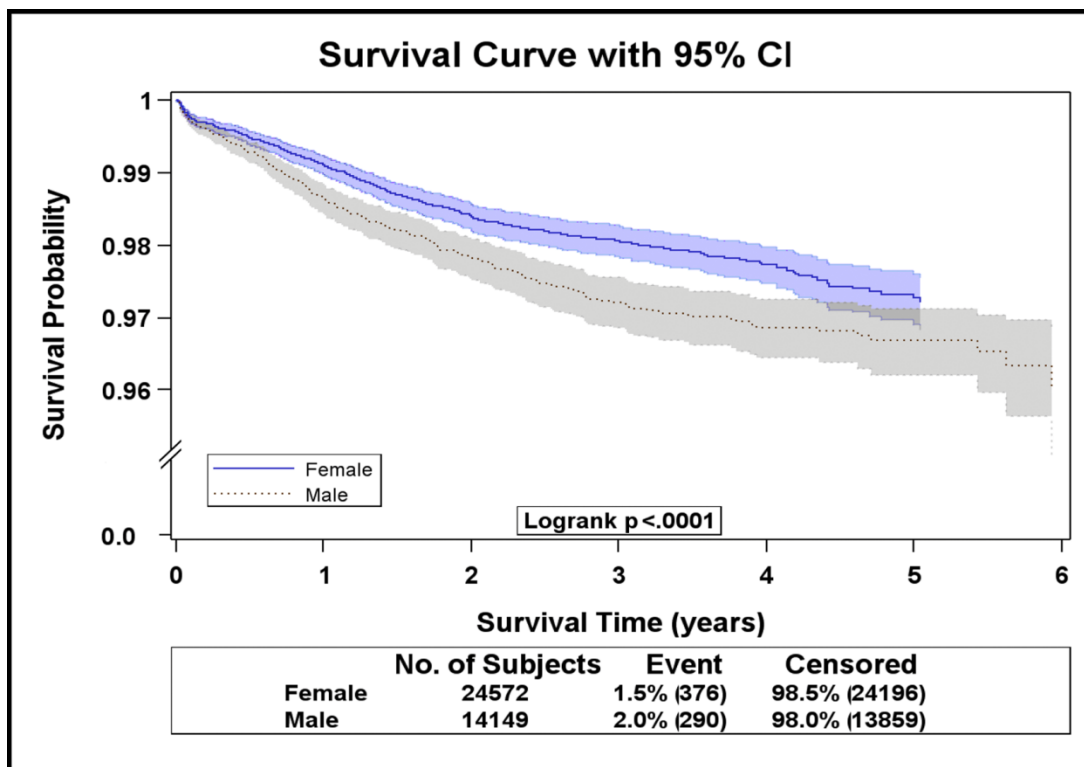


Fig. E-4

Kaplan-Meier survival curve showing implant survival after total knee arthroplasty according to sex. CI = confidence interval.

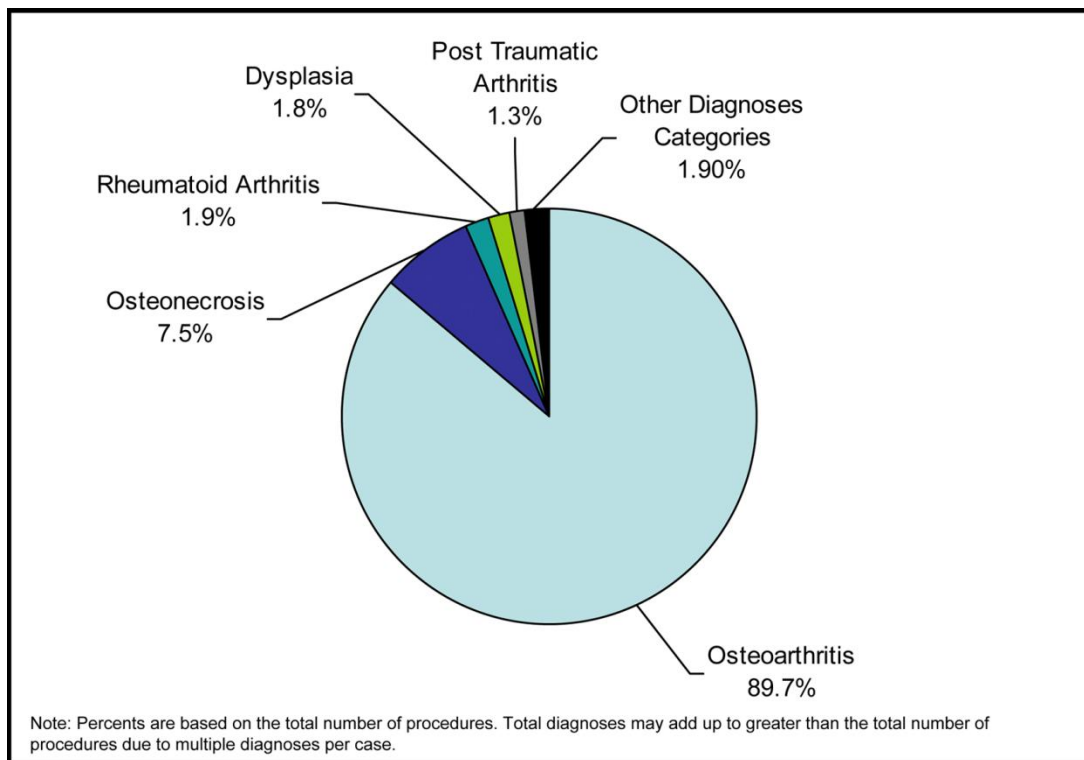


Fig. E-5

Chart illustrating the top five diagnoses leading to primary total hip arthroplasty.

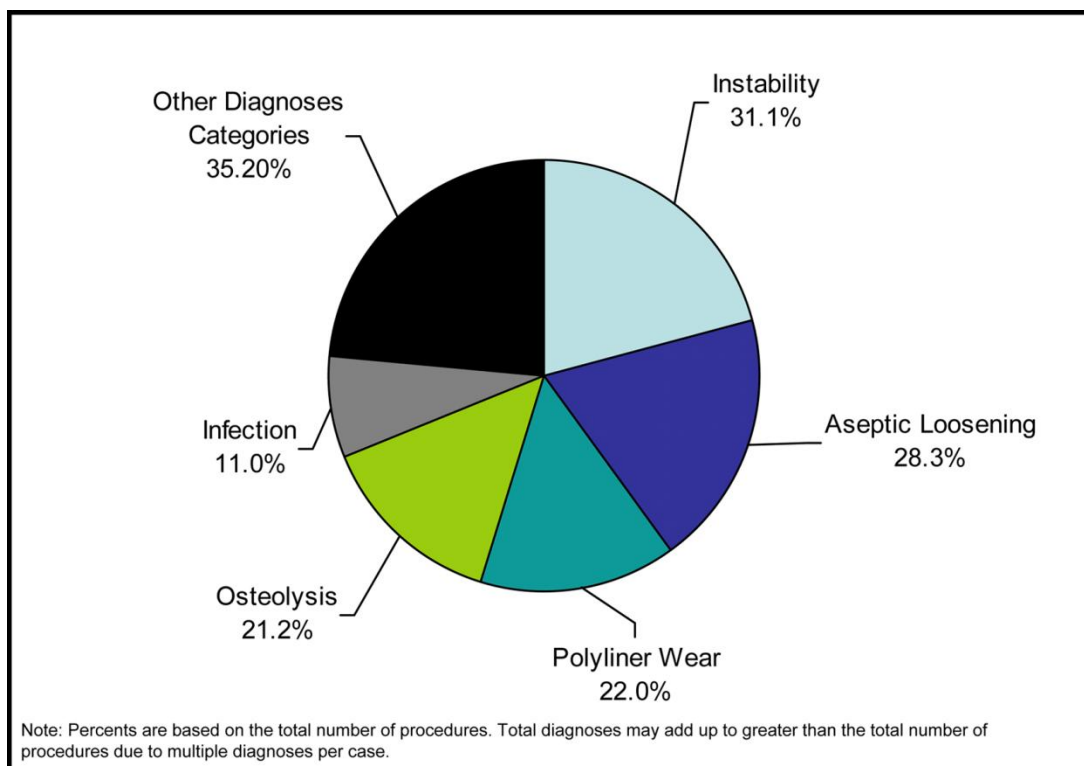


Fig. E-6

Chart illustrating the top five diagnoses leading to revision total hip arthroplasty.

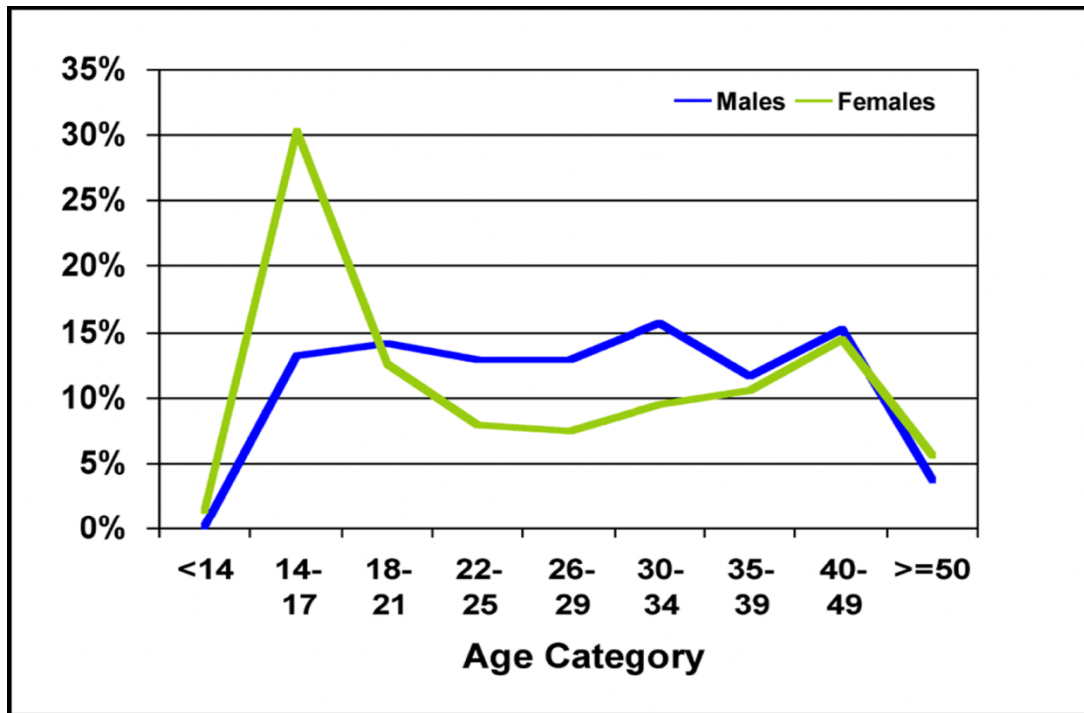


Fig. E-7

Graph showing the percentage of patients in each age category in the anterior cruciate ligament reconstruction (ACLR) registry population according to sex.

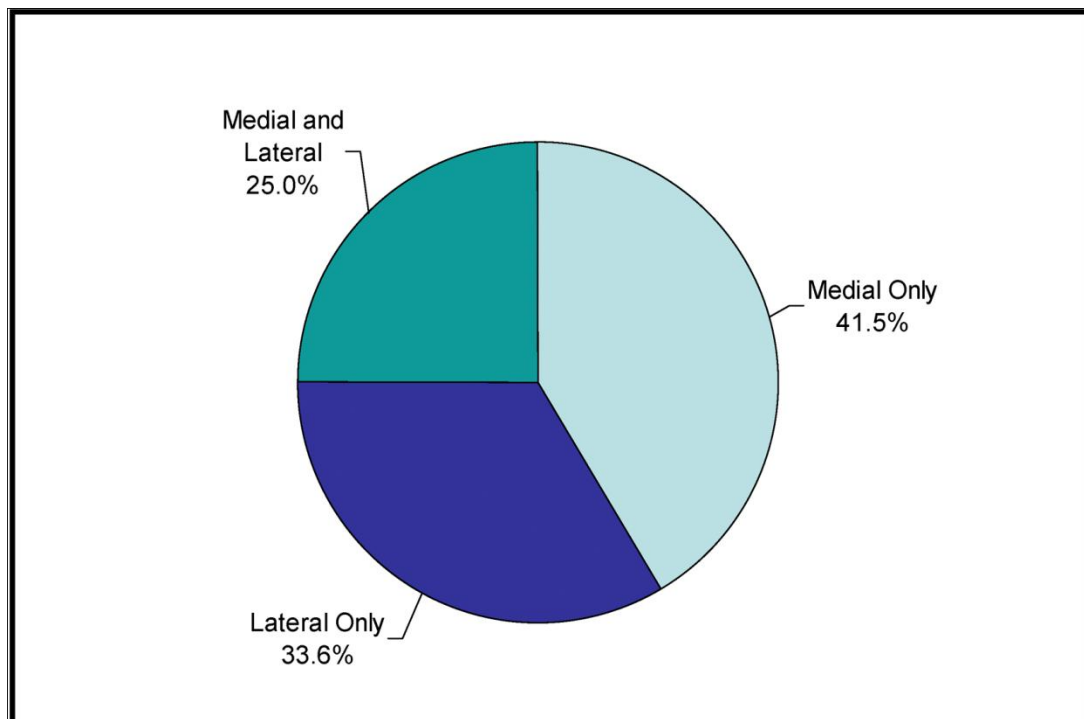


Fig. E-8

Chart showing the types of meniscal injury among patients undergoing anterior cruciate ligament reconstruction (ACLR).

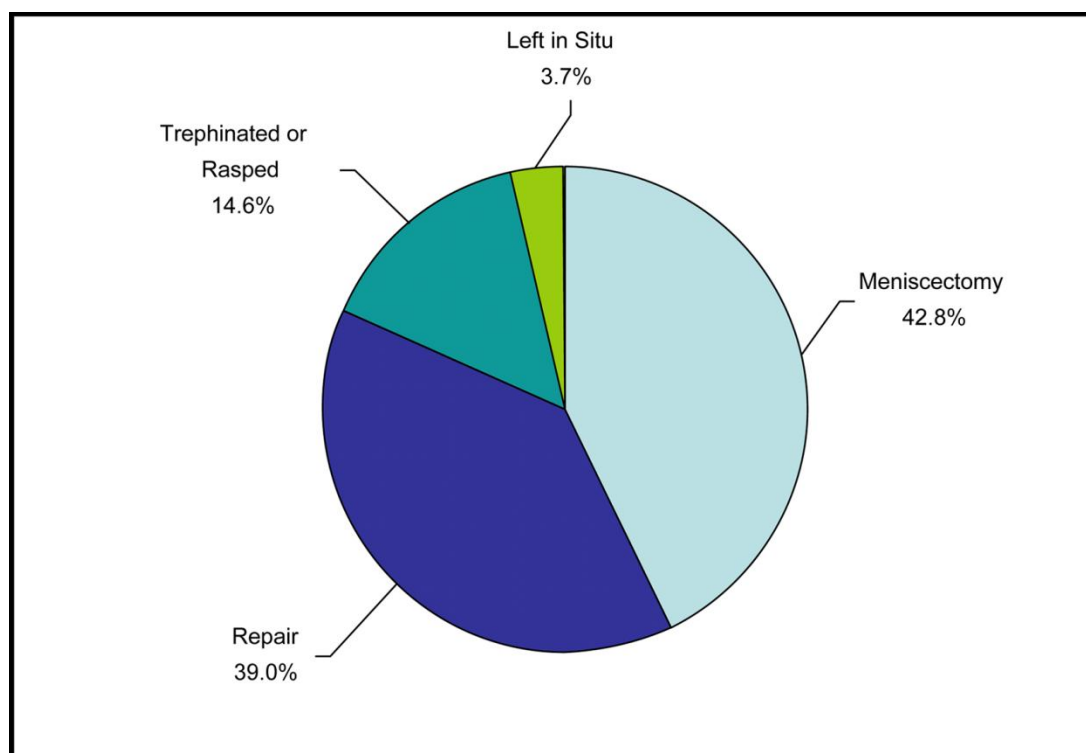


Fig. E-9

Chart showing the types of meniscal procedures in patients with a medial meniscal injury undergoing anterior cruciate ligament reconstruction (ACLR).

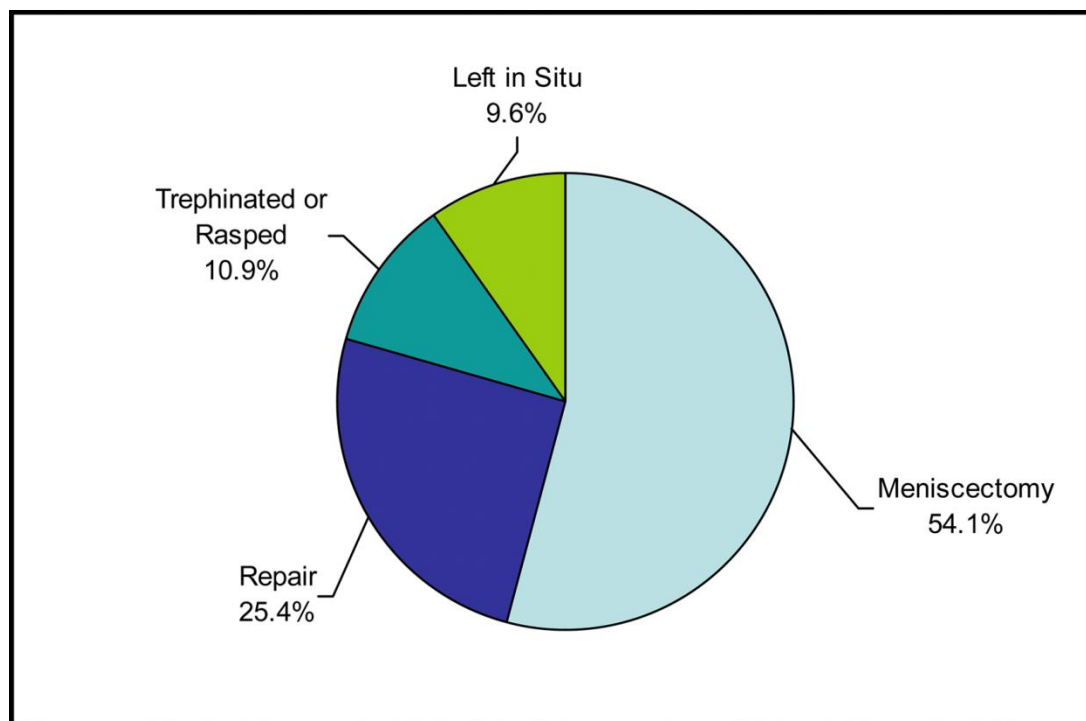


Fig. E-10

Chart showing the types of meniscal procedures in patients with a lateral meniscal injury undergoing anterior cruciate ligament reconstruction (ACLR).

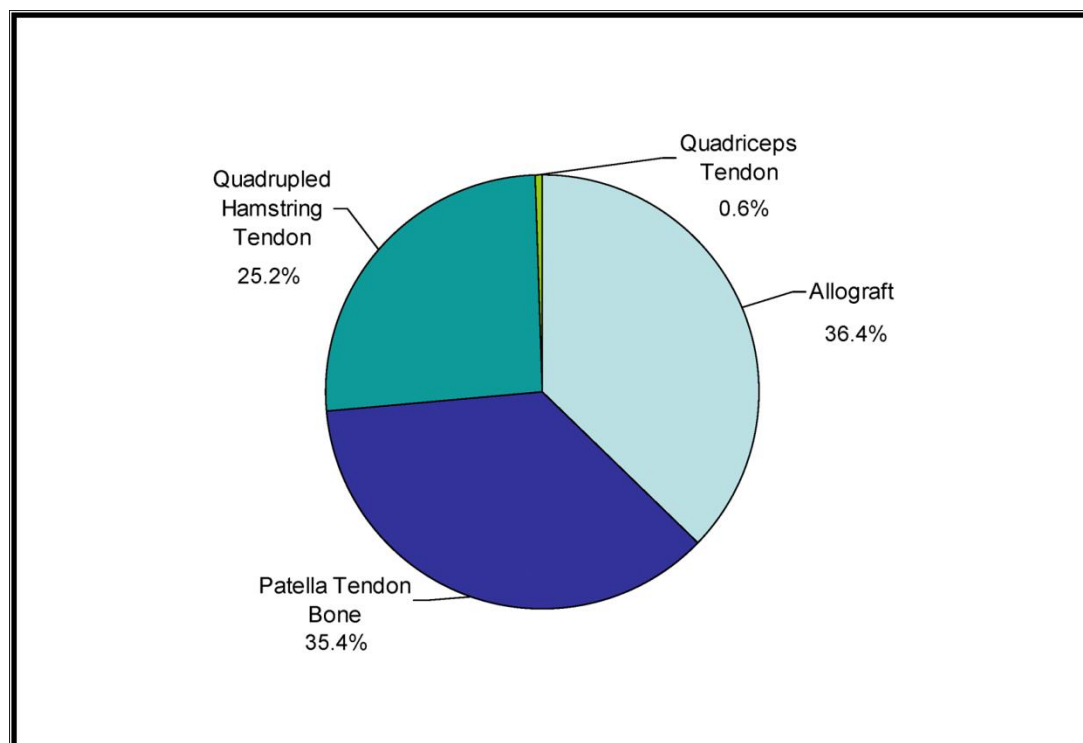


Fig. E-11

Chart showing the types of grafts used among patients undergoing primary anterior cruciate ligament reconstruction (ACLR).

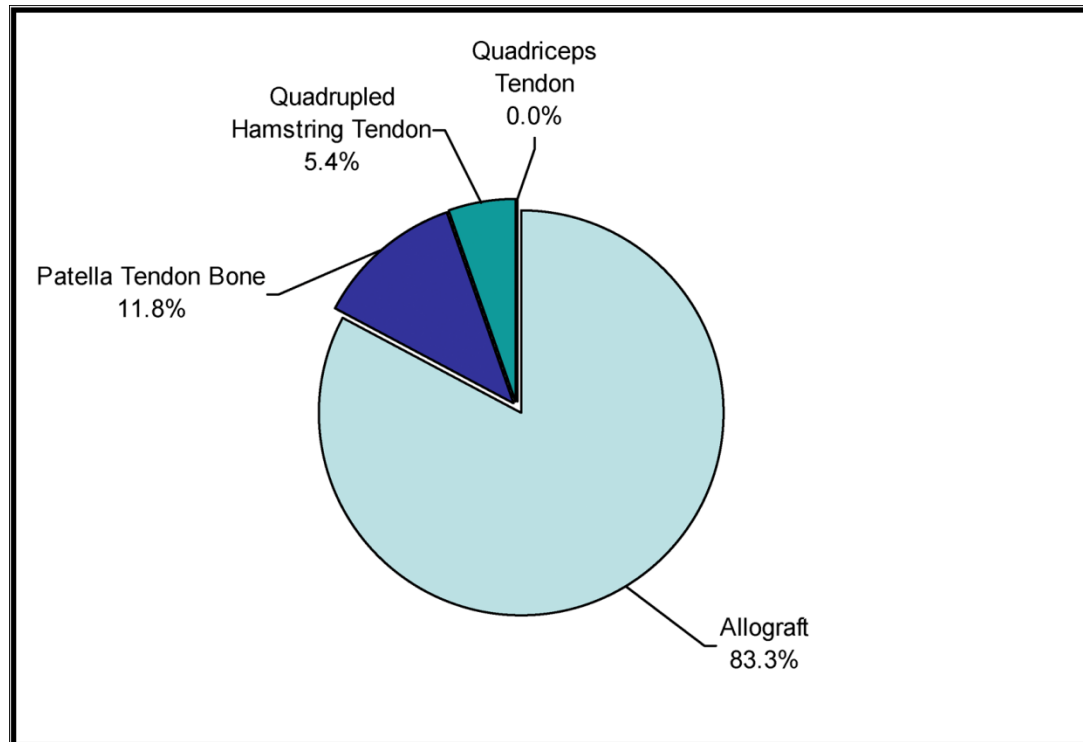


Fig. E-12

Chart showing the types of grafts used among patients undergoing revision anterior cruciate ligament reconstruction (ACLR).

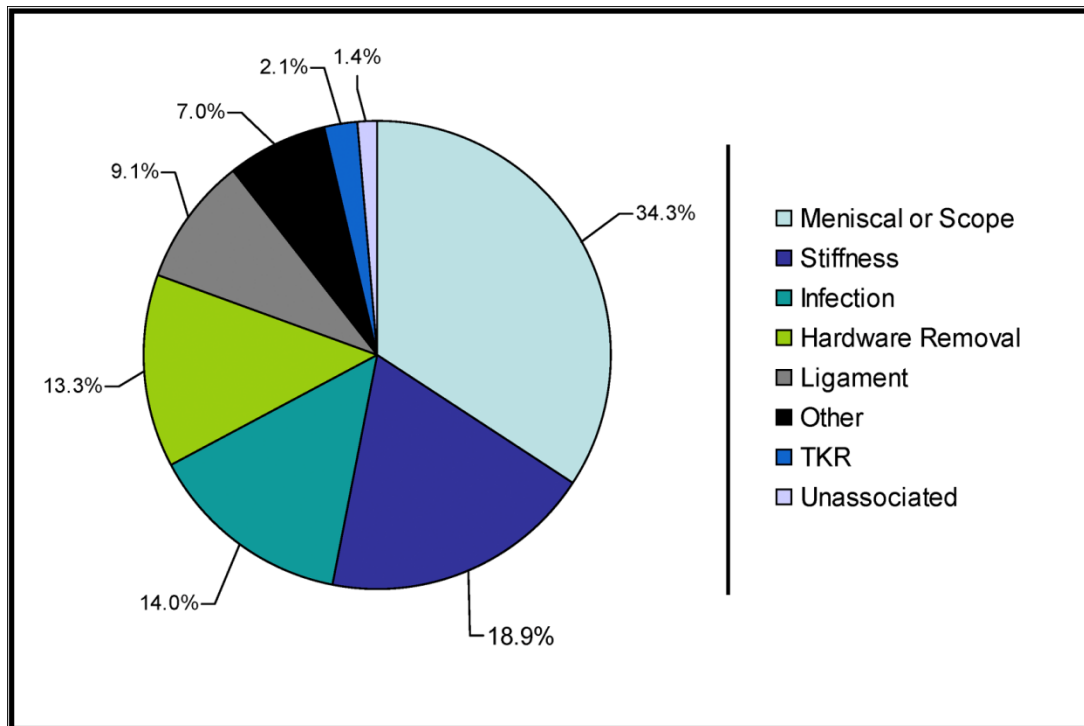


Fig. E-13

Chart showing the reason for reoperation on the index knee (first reoperation only), excluding ligament revision. TKR = total knee replacement.

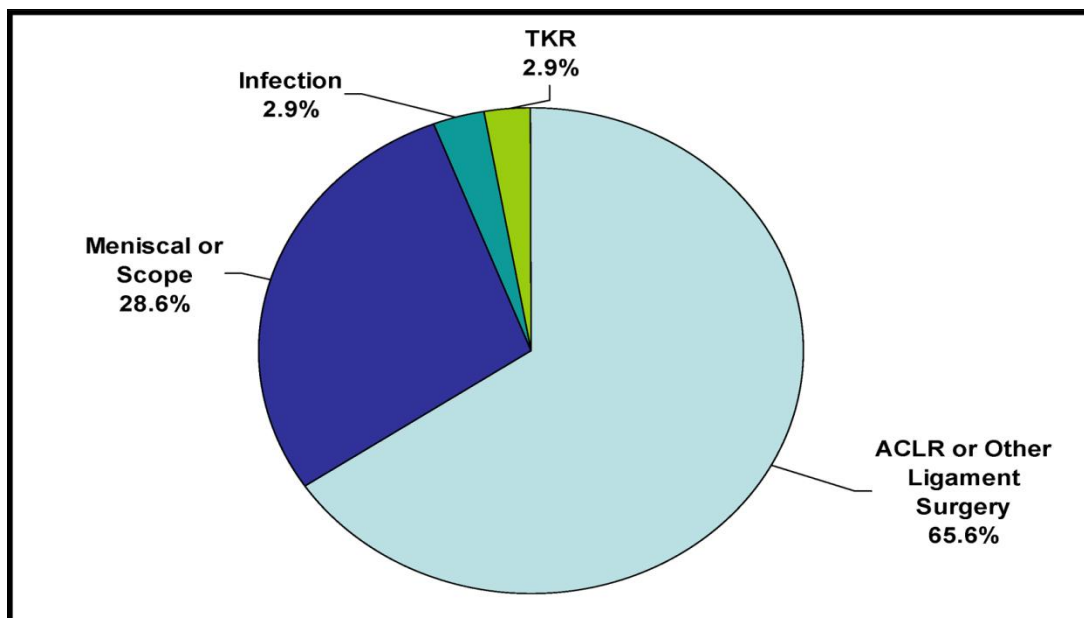


Fig. E-14

Chart showing the reason for reoperation on the contralateral knee (first reoperation only). ACLR = anterior cruciate ligament reconstruction, TKR = total knee replacement.