

Fig. E-1A

Figs. E-1A, E-1B, and E-1C Experimental configuration during Phase I of the experiment. Fig. E-1A Anterior view. Fig. E-1B Lateral view. Fig. E-1C Posterior view.

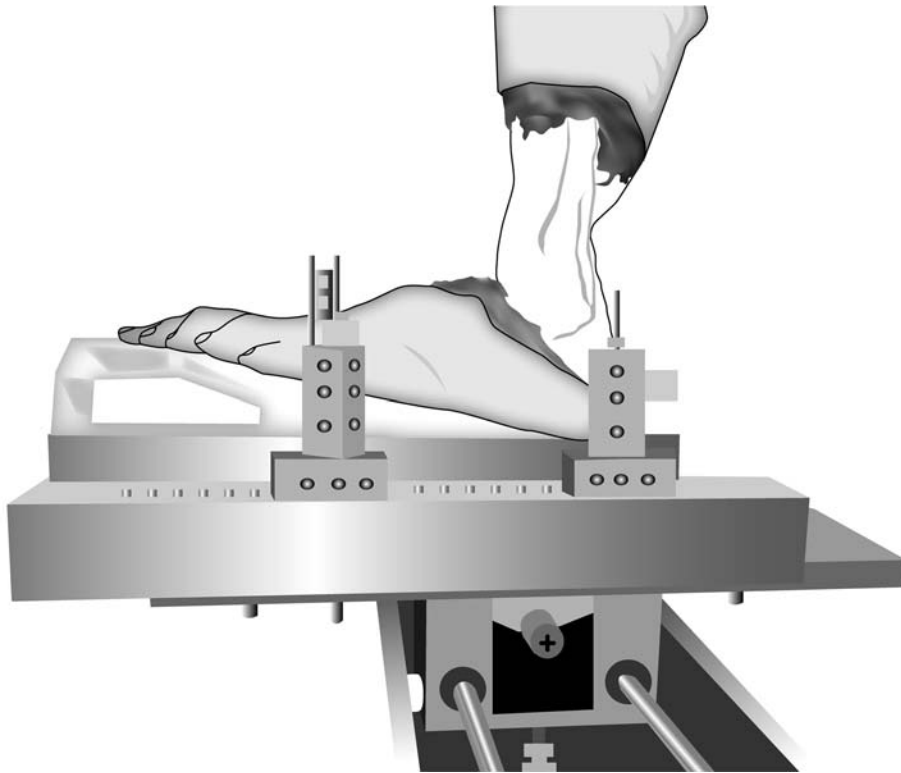


Fig. E-1B

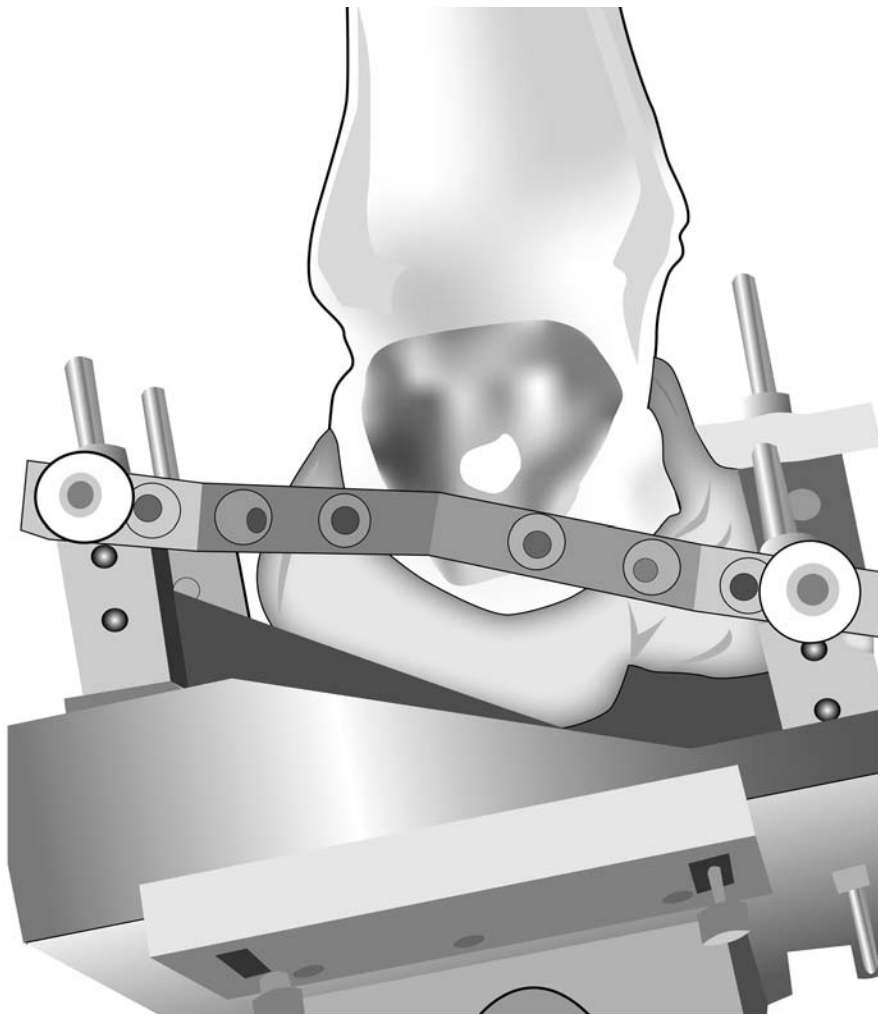


Fig. E-1C

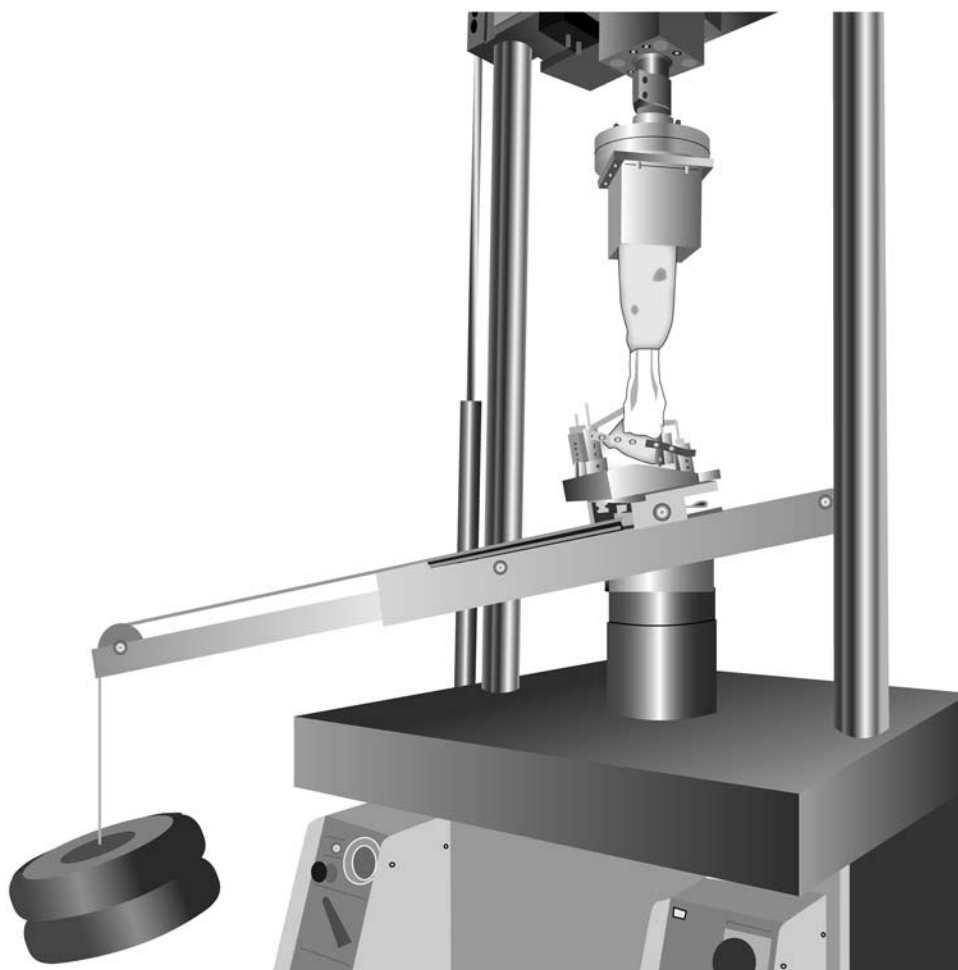


Fig. E-2

Experimental test configuration during Phase II. An external force was applied laterally to the foot carriage by using weight plates with a total mass of 45.4 kg (100 lb) suspended from a cable that was attached to the aluminum carriage and passed over a pulley.