



Fig. E-1A

An example of a spindle spread following the injection of 10 mL of iohexol contrast medium (Omnipaque) into a lumbar plexus catheter.

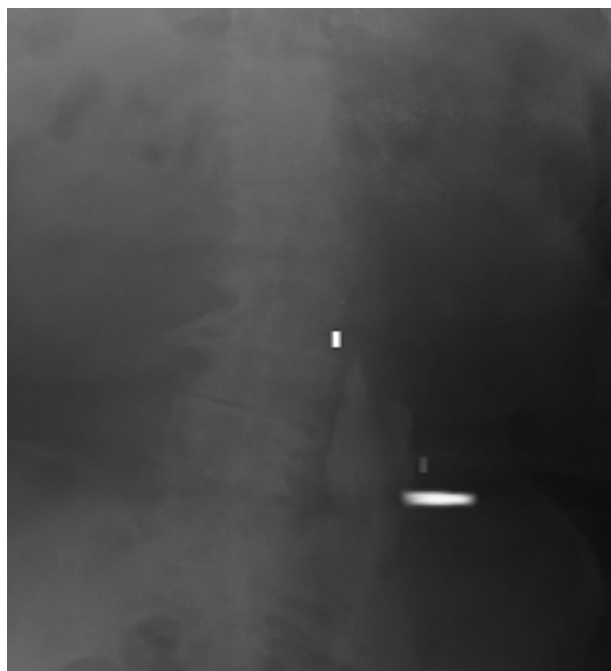


Fig. E-1B

An example of a blotch-type spread following the injection of 10 mL of iohexol contrast medium (Omnipaque) into a lumbar plexus catheter.

TABLE E-1 Demographic Data on Patients in Each Group

Variable	Continuous Femoral Block Group	Continuous Lumbar Plexus Block Group	Patient-Controlled Analgesia Group
No. of patients	75	75	75
Age*	66.6 ± 10.0	66.4 ± 12.2	68.3 ± 12.1
Sex (M/F)	25 (33.3%)/50 (66.7%)	24 (32.0%)/51 (68.0%)	26 (34.7%)/49 (65.3%)
Height* (cm)	156.8 ± 20.2	171.9 ± 27.7	159.1 ± 19.7
Weight* (kg)	72.9 ± 16.7	69.0 ± 13.4	72.8 ± 13.9
Surgical duration* (min)	116.5 ± 15.4	114.1 ± 16.9	115.9 ± 16.2
Length of stay* (days)	3.9 ± 0.3	3.9 ± 0.5	4.4 ± 1.0

\*The values are given as the mean and the standard deviation.