

Fig. E-1A

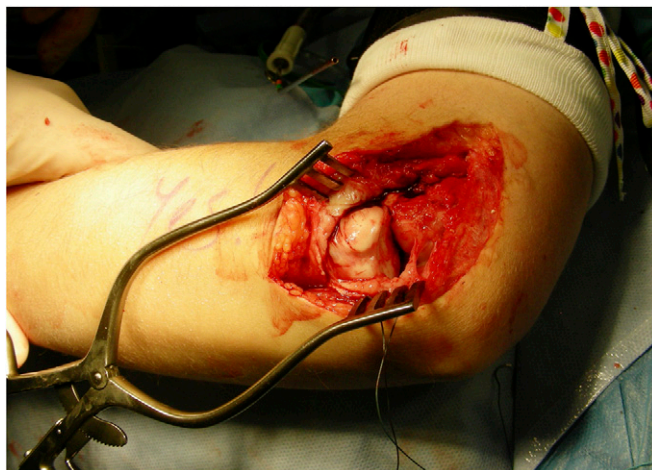


Fig. E-1B

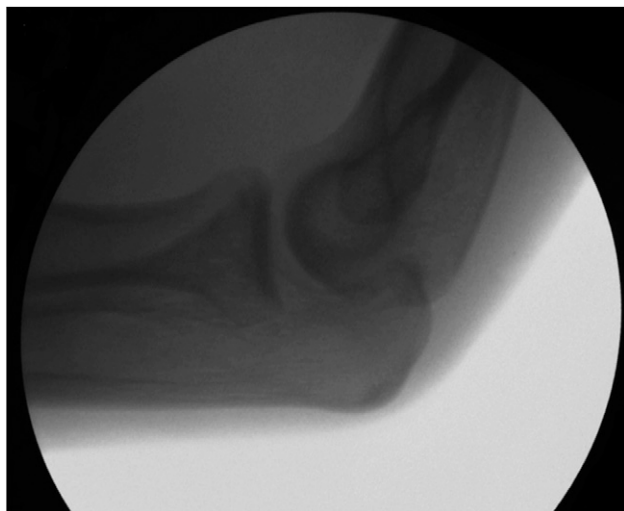


Fig. E-1C

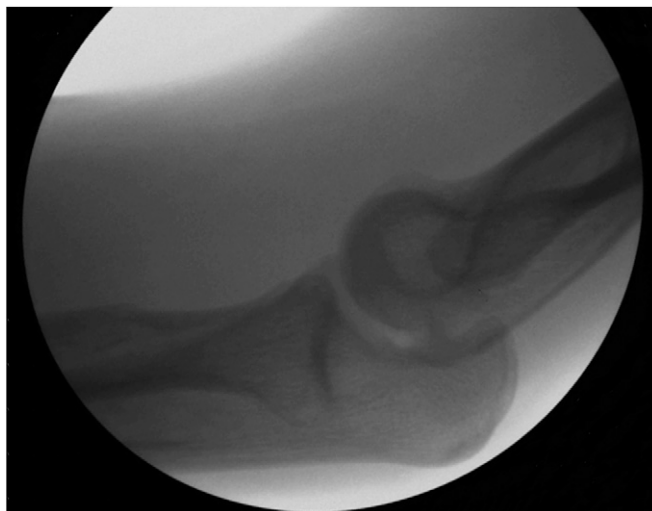


Fig. E-1D

Intraoperative photographs and fluoroscopic images of the pivot-shift test. Figs. E1-A and E1-C demonstrate the joint at rest. Figs. E1-B and E1-D show an incongruent ulnohumeral joint and posterior subluxation of the radial head after application of axial compression with supination and valgus moments. Figs. E-1A and 1-B are of Case 6. Figs. E-1C and E-1D are of Case 1.