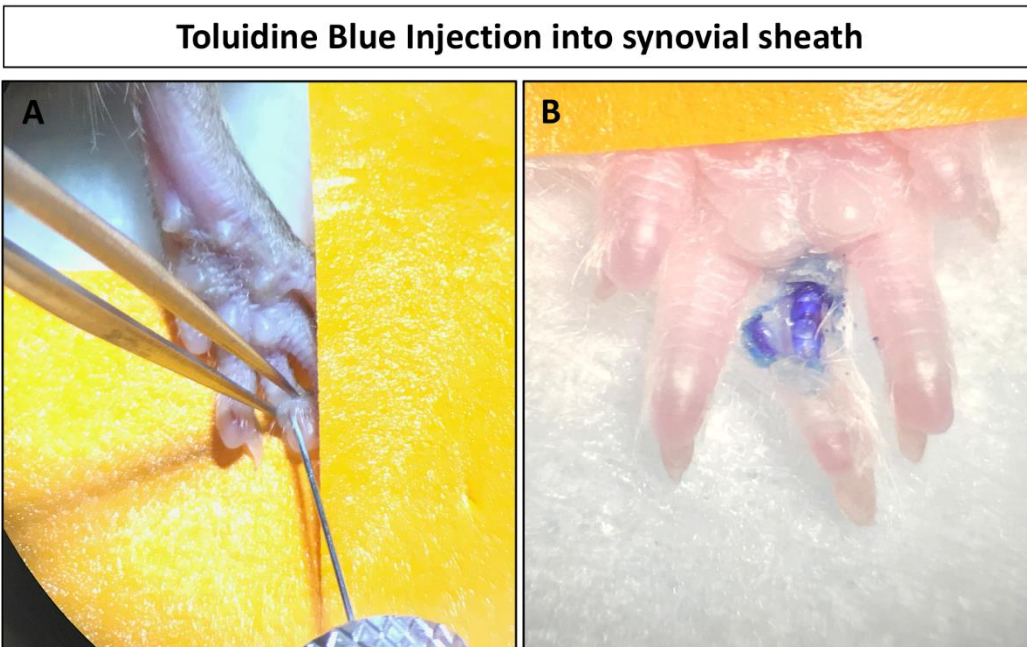
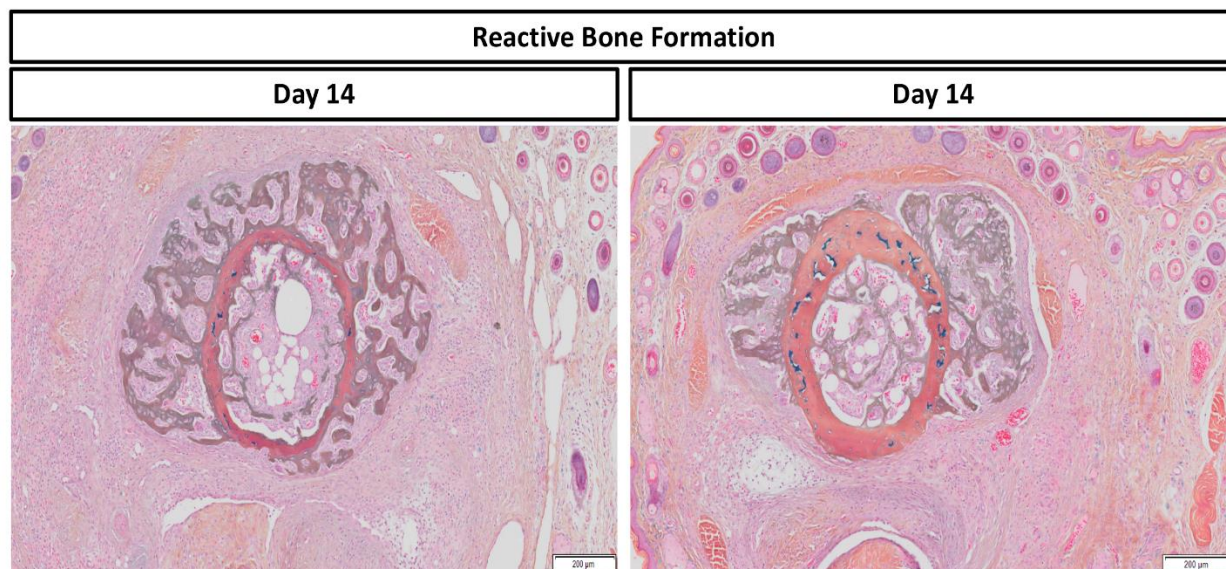


**The following content was supplied by the authors as supporting material and has not been copy-edited or verified by JBJS.**



**Supplemental Figure 1:** Toluidine blue injection demonstrating successful intra-sheath inoculation with little to no dye observed subcutaneous or within other structures of the mouse digit



**Supplemental Figure 2:** Histopathology of a limited number of animals (n=2) displayed cortical bone formation, suggesting the infection transitioned to osteomyelitis. Images were taken at 4x magnification.