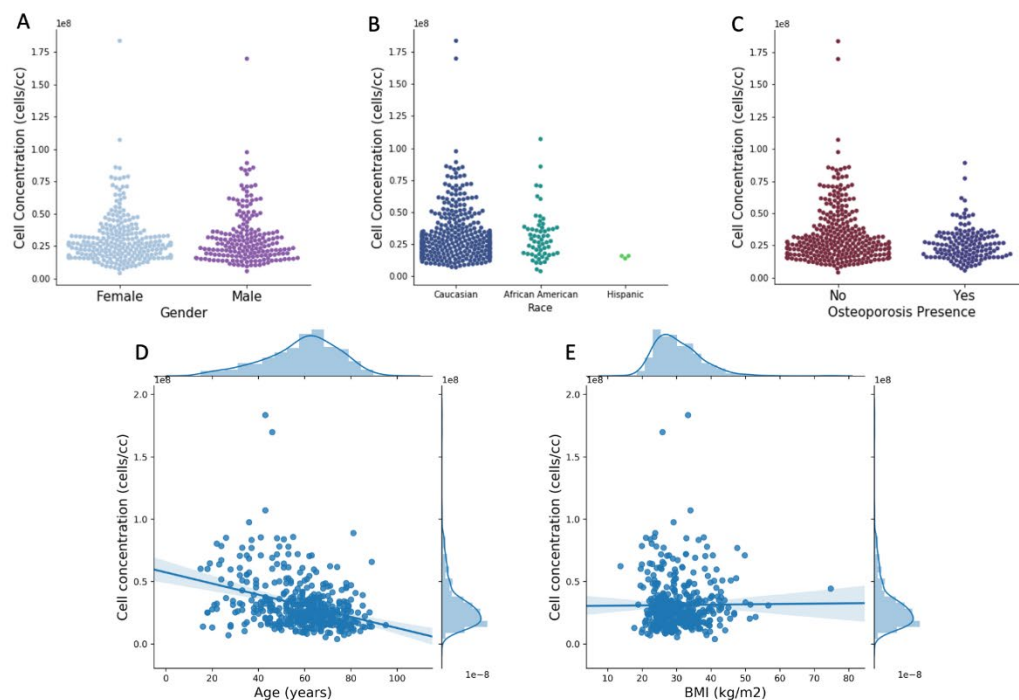
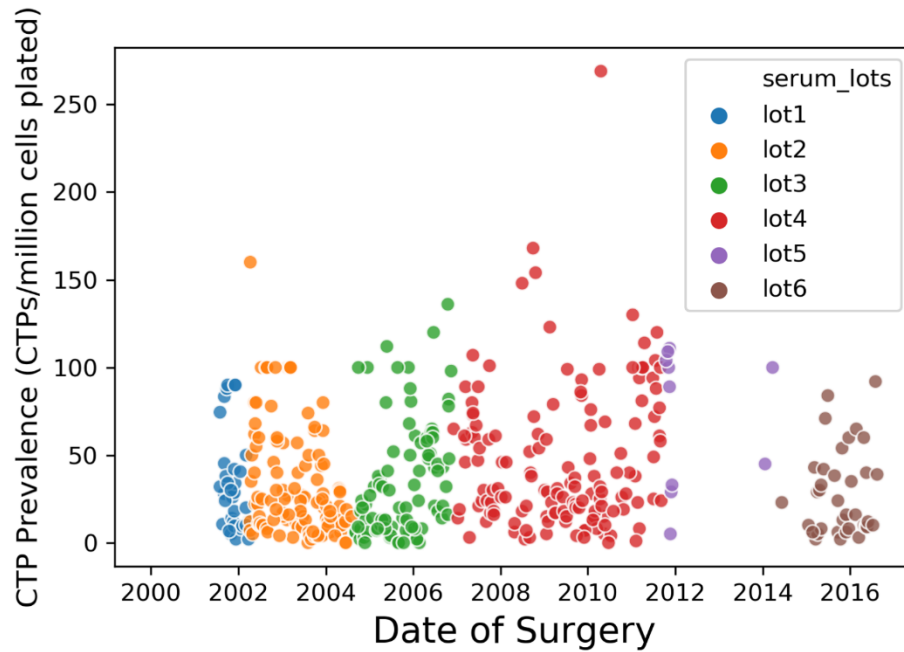


The following content was supplied by the authors as supporting material and has not been copy-edited or verified by JBJS.



Supplementary Figure 1: Scatterplot showing the distribution and wide variation in cell concentration ([Cell]) in human anterior iliac-crest derived bone marrow aspirates (BMA) versus various other factors assessed in the study including A) Gender, B) Race, C) Presence or absence of diagnosed osteoporosis, D) Age, and E) Body Mass Index (BMI). A total of 436 patients were analyzed in the study.



Supplementary Figure 2: Scatterplot showing the distribution and variation in CTP prevalence (P_{CTP}) in human anterior iliac-crest derived bone marrow aspirates (BMA) when cultured in media using six lots of fetal bovine serum (FBS) through the entire study from 2001-2016.