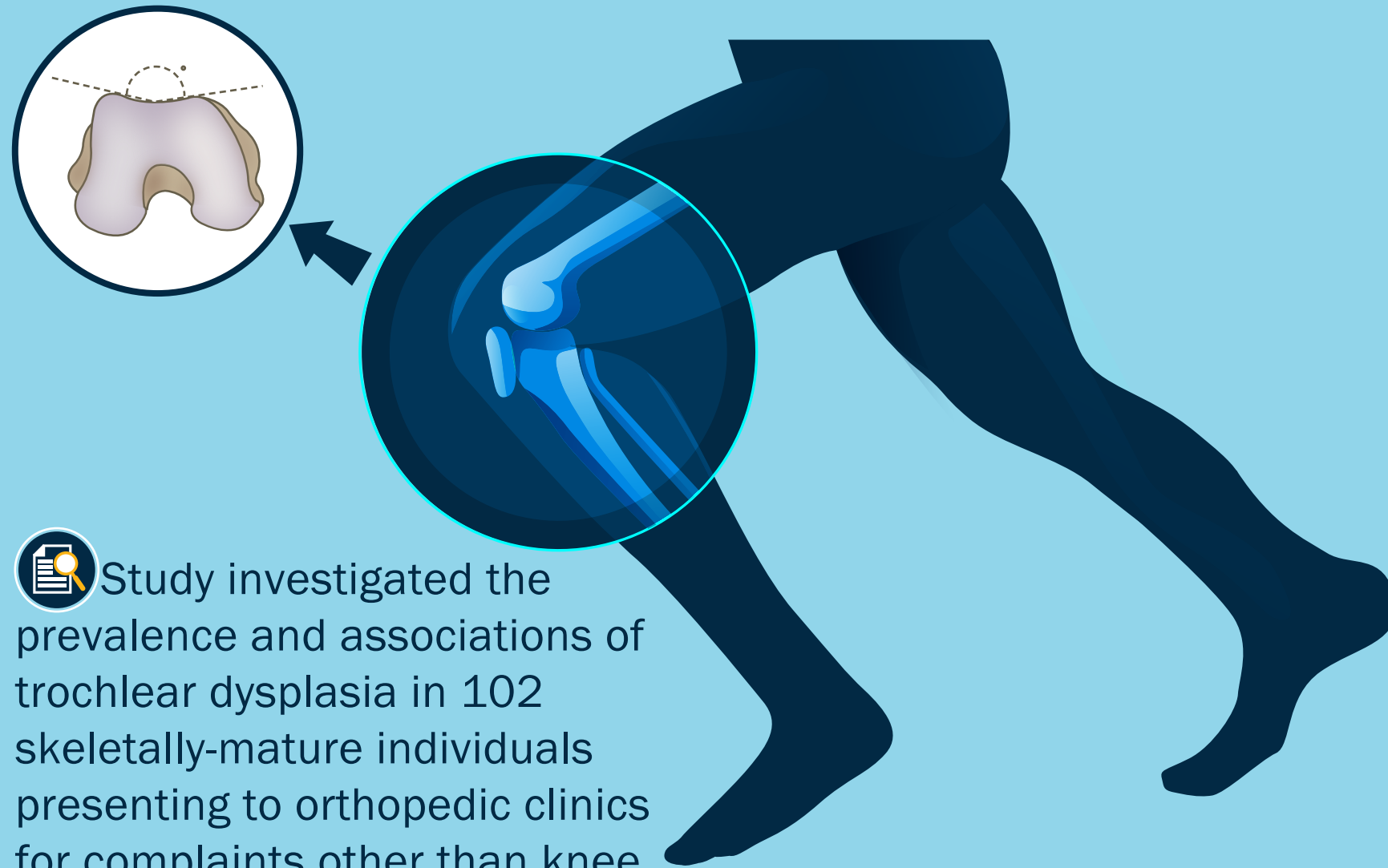



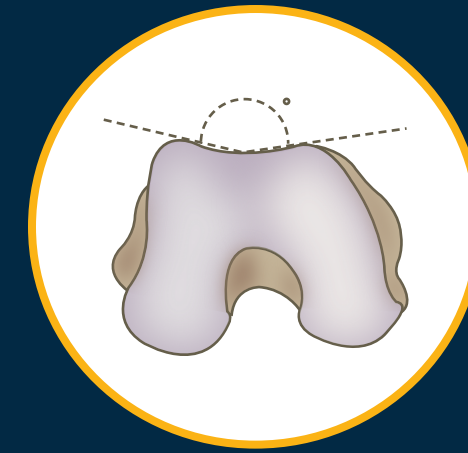
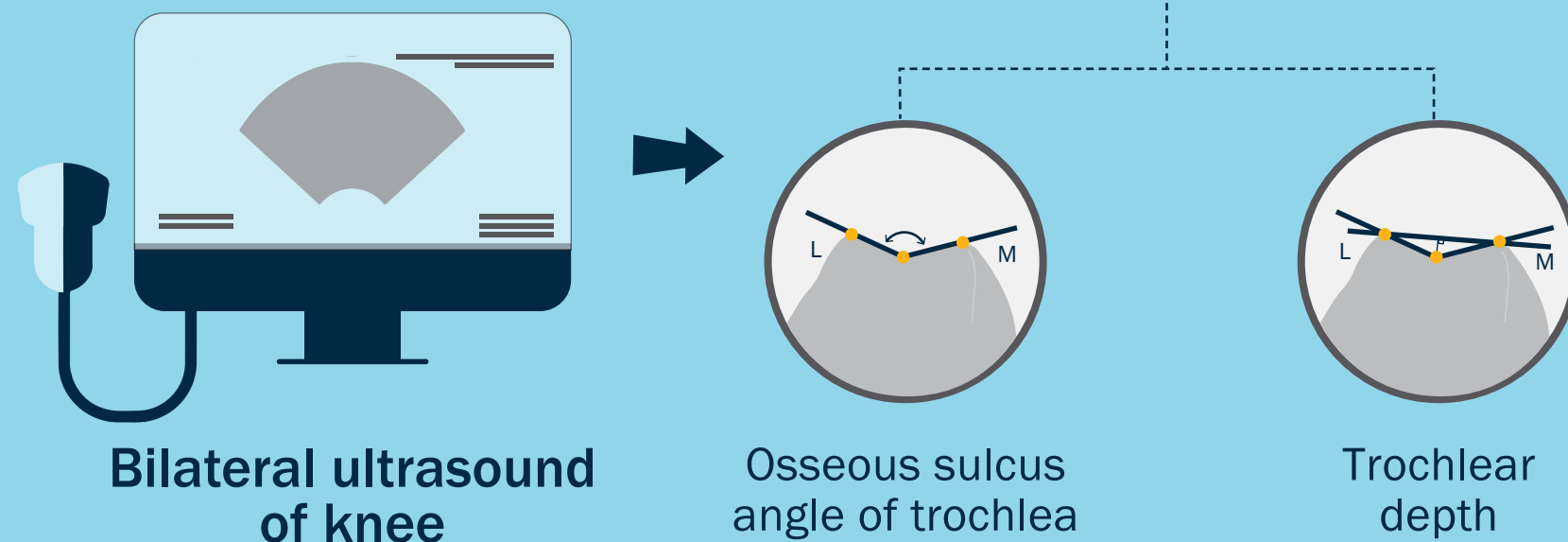
Incidence of Trochlear Dysplasia and its Relationship with Patellar Instability

Patellar instability, a common condition in adolescents, is known to be strongly associated with trochlear dysplasia

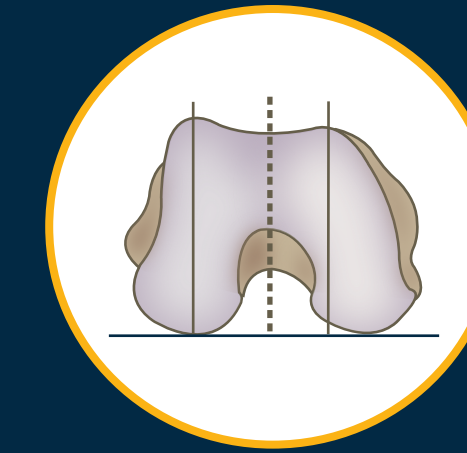


 Study investigated the prevalence and associations of trochlear dysplasia in 102 skeletally-mature individuals presenting to orthopedic clinics for complaints other than knee symptoms

Identification of trochlear dysplasia by



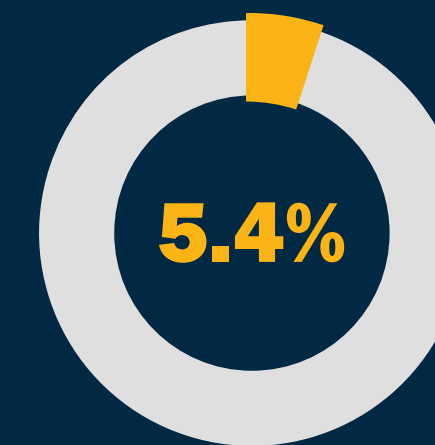
Mean sulcus angle:
 $144.1^{\circ} \pm 6.8^{\circ}$



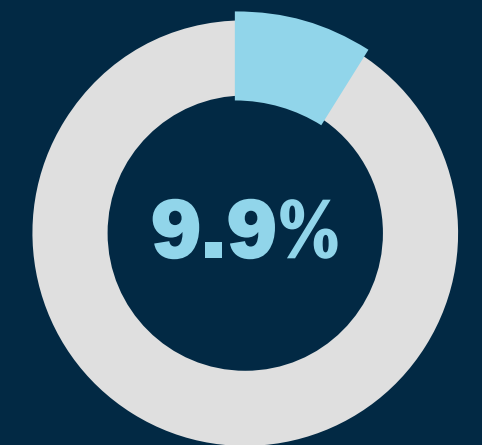
Mean trochlear depth:
 5.5 ± 1.4 mm

Prevalence of high-grade trochlear dysplasia

Based on sulcus angle



Based on trochlear depth



Results

High-grade trochlear dysplasia



Association
11 times more likely



Previous patellar instability

High grade trochlear dysplasia affects nearly 5-10% of adults and is strongly associated with patellar instability

Prevalence of Trochlear Dysplasia and Associations with Patellofemoral Pain and Instability in a Skeletally Mature Population

DeVries et al. (2021)| DOI: 10.2106/JBJS.20.01624

www.jbjs.org

 theJBJS

 @JBJS

