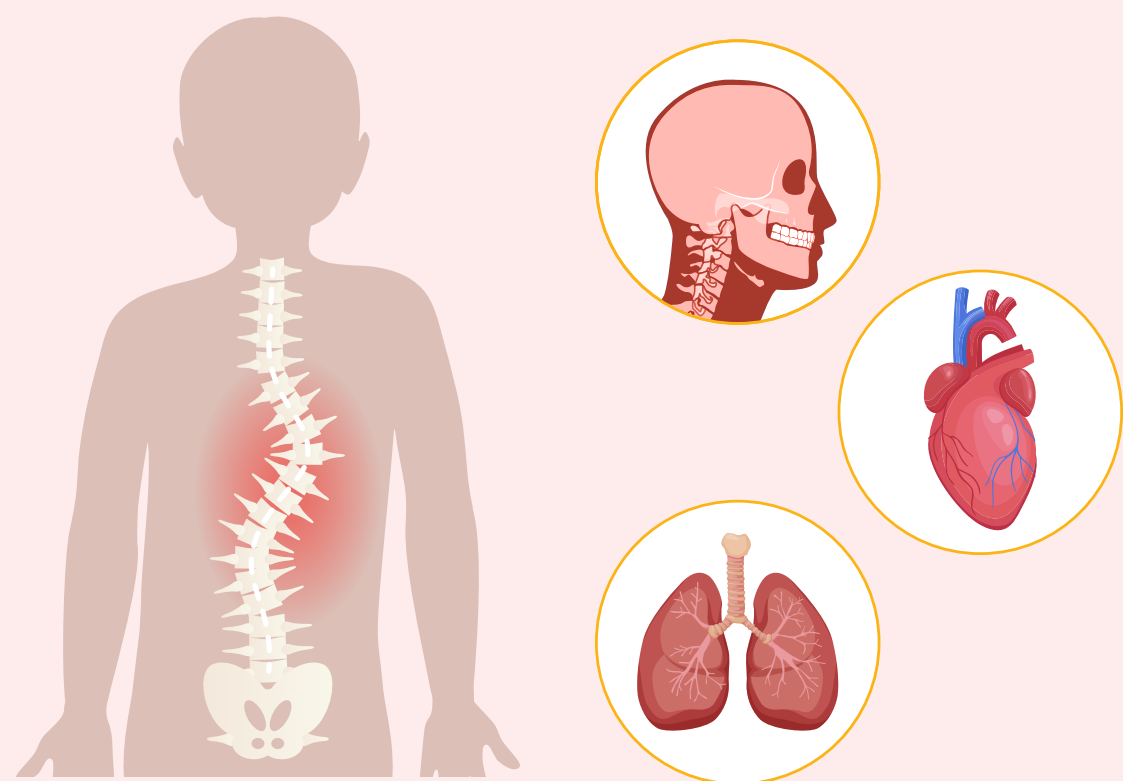


Assessment of Concomitant Anomalies in Patients with Congenital Scoliosis



Congenital scoliosis

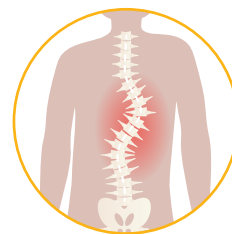
While vertebral malformations and systemic anomalies associated with congenital scoliosis have been investigated, there are limited data on specific organ anomalies

Deciphering disorders Involving Scoliosis and COmorbidities (DISCO) study



636

patients who underwent scoliosis correction surgery



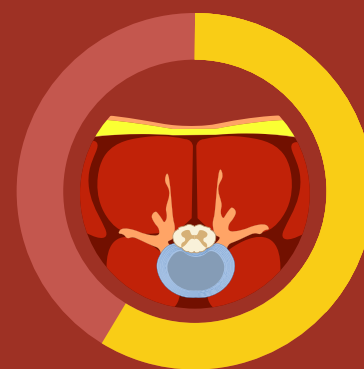
Scoliosis patient

- Mean age: 6.4 ± 6.3 years
- Mean Cobb angle of the major curve: $60.8^\circ \pm 26.5^\circ$



30.3%

Intraspinal abnormalities



59.1%

Diastematomyelia
(most common anomaly)



Intraspinal anomalies



Severe deformities

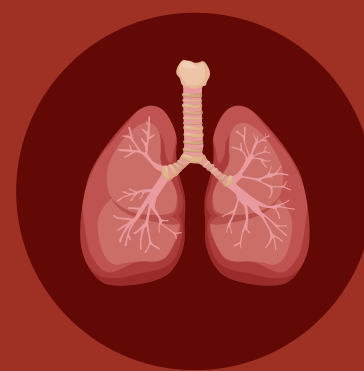


Larger Cobb angles of the major curve

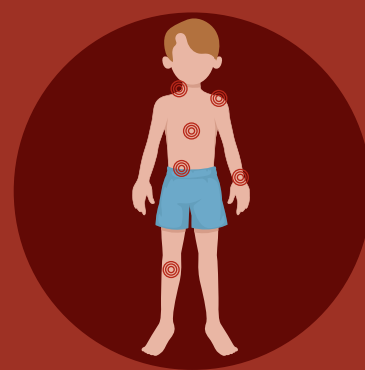


11.6%

Cardiac anomalies



↓ Worse pulmonary function



Musculoskeletal anomalies
(other than intraspinal
and maxillofacial)



↑ 9.2-fold
in additional maxillofacial anomalies



Understanding the potential associations of concomitant anomalies in patients with congenital scoliosis can aid in a comprehensive preoperative evaluation process

Retrospective Analysis of Associated Anomalies in 636 Patients with Operatively Treated Congenital Scoliosis

Wu et al. (2023) | DOI: 10.2106/JBJS.22.00277

www.jbjs.org

theJBJS

@JBJS

