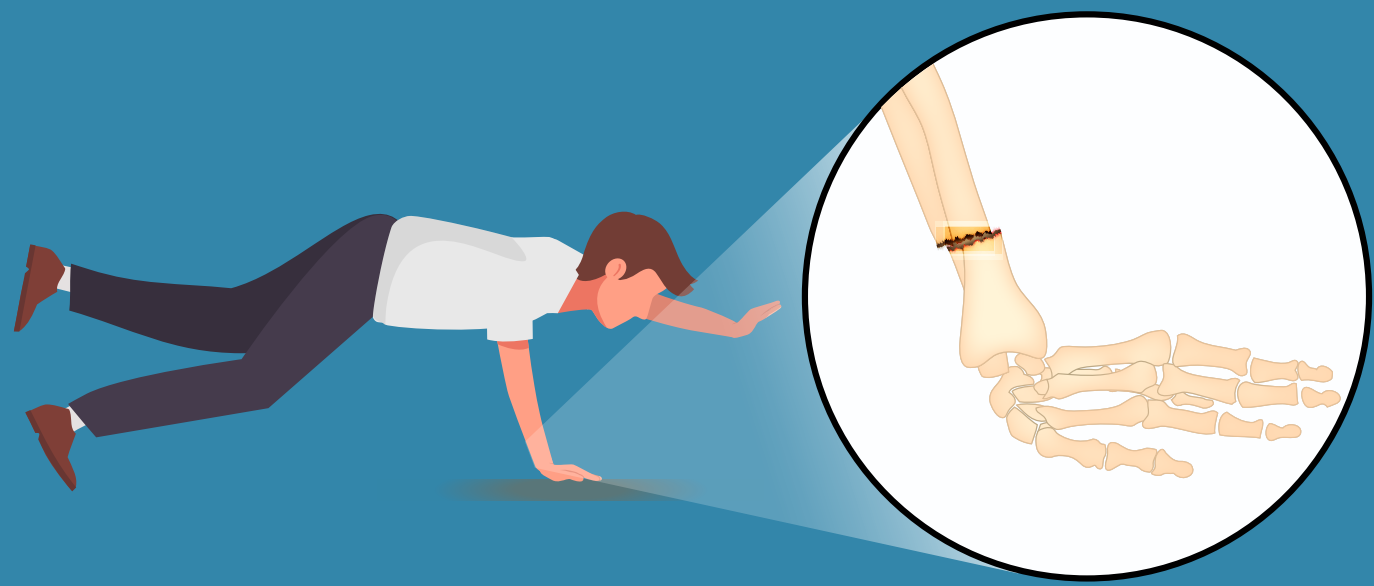
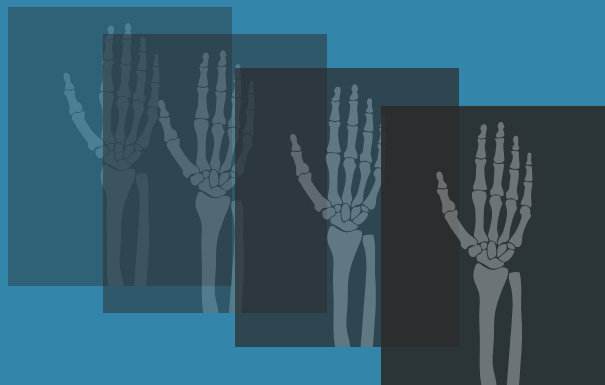


# Is Routine Imaging Necessary After Distal Radius Fractures?

Distal radius fractures are very common



Treatment often involves several radiographs



326 patients



Usual imaging group

Radiographs at 1, 2, 6, & 12 weeks

Reduced imaging group

Radiographs at 1, 2 weeks + when clinically indicated

			Usual imaging group (n = 166)	Reduced imaging group (n = 160)
	DASH*	Median (1-100)#	12	9.5
	Quality of life	Median (0-1)	0.84	0.84
	Pain at rest	Median (1-10)	0.4	0.2
	Wrist Flexion /Extension	Mean (degrees)	100	108
	Complications	%	11.3	11.4

\*Disabilities of the Arm, Shoulder and Hand,  
#Lower score = better function



For patients with a distal radius fracture, omitting routine radiographs after the initial 2 weeks does not affect clinical outcomes or complications

Omitting Routine Radiography of Traumatic Distal Radius Fractures After Initial 2-Week Follow-up Does Not Affect Outcomes

Van Gerven et al. (2019) DOI: 10.2106/JBJS.18.01160

www.jbjs.org | theJBJS | @JBJS

