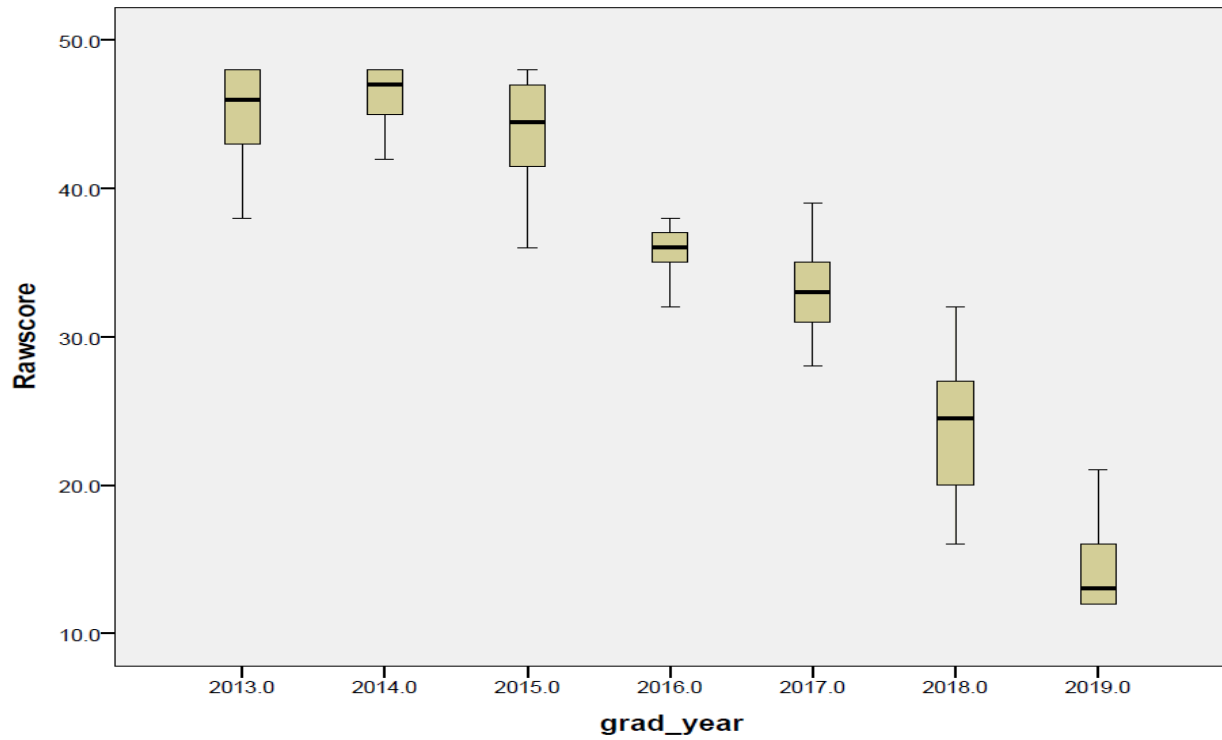


Appendix A: DECIDE Model¹

D	Define the problem	Item 1: Recognizing physiological and psychological status in patients in a timely manner Item 4: Identifying patients for whom physical therapy is not indicated
E	Establish the criteria	Item 8: Identify relevant information from the patient's history (health status, living situation, etc.) to prioritize the physical therapy examination Item 12: Distinguishing between clinically important and lower priority impairments
C	Consider all the alternatives	Item 2: Gathering information from multiple data sources (patient and caregiver, healthcare professional, evidence, and medical records) to guide plan of care Item 5: Recognizes the need for further referral and communication with other healthcare providers
I	Identify the best alternative	Item 7: Synthesizing data to arrive at an accurate prognosis Item 11: Providing a rationale for interventions selected for patients with various diagnoses
D	Develop and implement a plan of action	Item 6: Sequencing tests and measures in a logical manner to optimize efficiency Item 9: Establishing a plan of care consistent with the examination and evaluation
E	Evaluate and monitor the solution	Item 3: Adjusting tests, measures, or interventions according to the patient response Item 10: Re-evaluating and adjusting the plan of care based on the patient's needs

Appendix B: Median Scores by Class Year



Note: All differences were statistically significant ($p < 0.05$) except 2013 and 2014, 2013 and 2015, and 2014 and 2015.

Appendix C: CDM Tool, Version IV

Please rate how often you need advice, support or intervention from a more experienced physical therapist to perform this activity competently.				
Item	I need direct assistance to do this in the clinic	I need minimal assistance to do this in the clinic	I do this routinely without assistance in the clinic except in unusual cases	I am capable of teaching this to others in the clinical setting
1. Recognizing physiological and psychological status in patients in a timely manner				
2. Gathering information from multiple data sources (patient and caregiver, healthcare professional, evidence, and medical records) to guide plan of care				
3. Adjusting tests, measures, or interventions according to the patient response				
4. Identifying patients for whom physical therapy is not indicated				
5. Recognizes the need for further referral and communication with other healthcare providers				
6. Sequencing tests and measures in a logical manner to optimize efficiency				
7. Synthesizing data to arrive at an accurate prognosis				
8. Identify relevant information from the patient's history (health status, living situation, etc.) to prioritize the physical therapy examination				
9. Establishing a plan of care consistent with the				

examination and evaluation				
10. Re-evaluating and adjusting the plan of care based on the patient's needs				
11. Providing a rationale for interventions selected for patients with various diagnoses				
12. Distinguishing between clinically important and lower priority impairments				
Adapted with permission. Copyright © 2006 American Physical Therapy Association.				