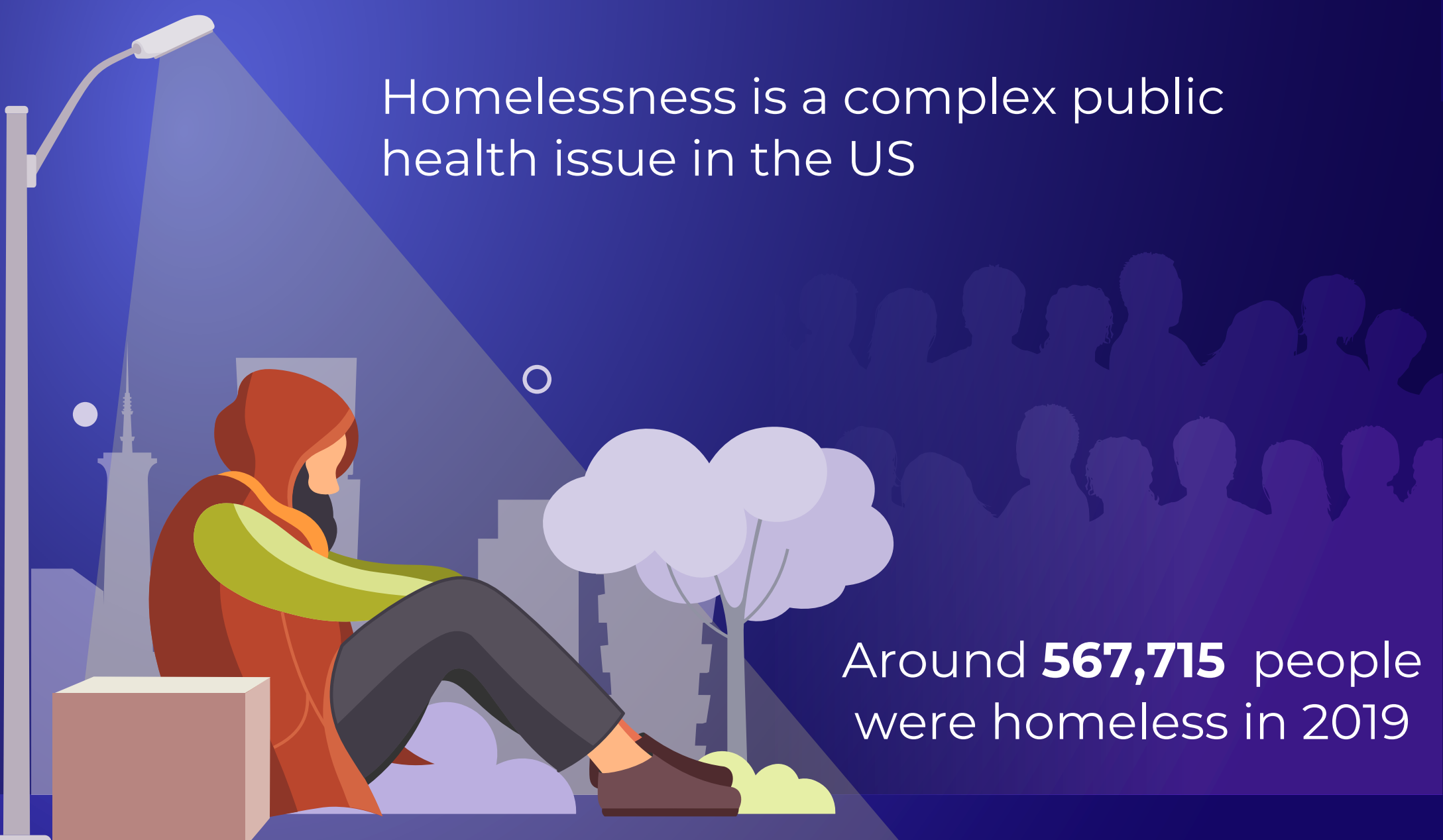


Long-term Outcomes of Permanent Supportive Housing for Chronically Unsheltered Individuals



Homelessness is a complex public health issue in the US

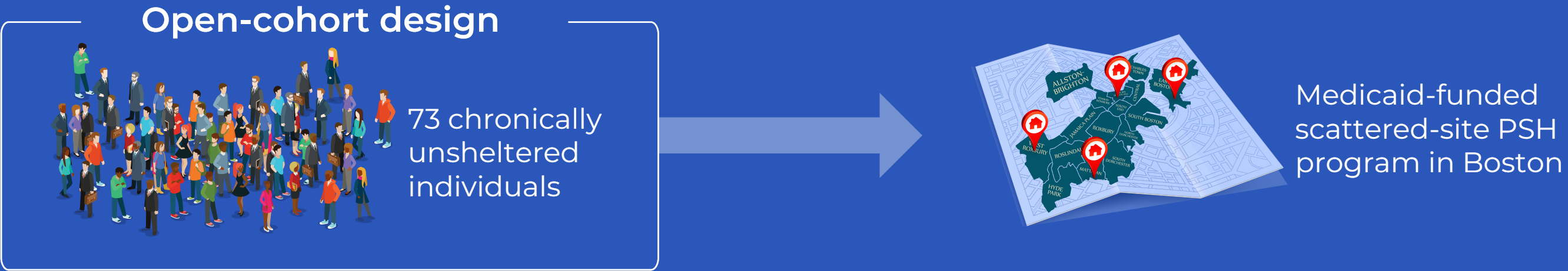
Around **567,715** people were homeless in 2019

Permanent supportive housing (PSH) aims to improve the health and living conditions of the homeless population:

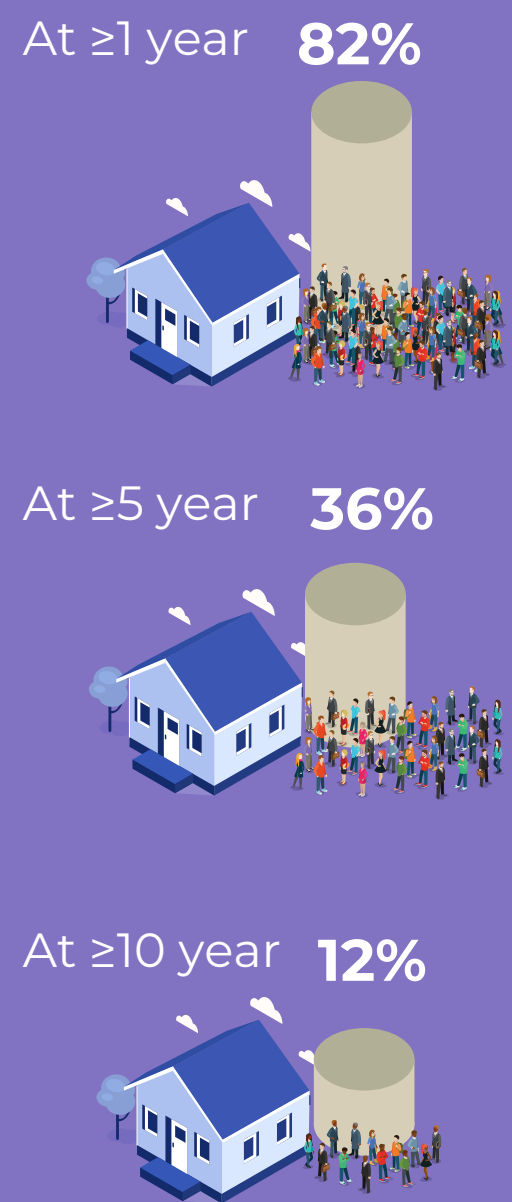
- ✓ Affordable housing
- ✓ Range of health and social services

What are the housing retention, stability, and participant survival outcomes for unsheltered individuals in a PSH program in Boston?

14-year longitudinal study (2005-2019)



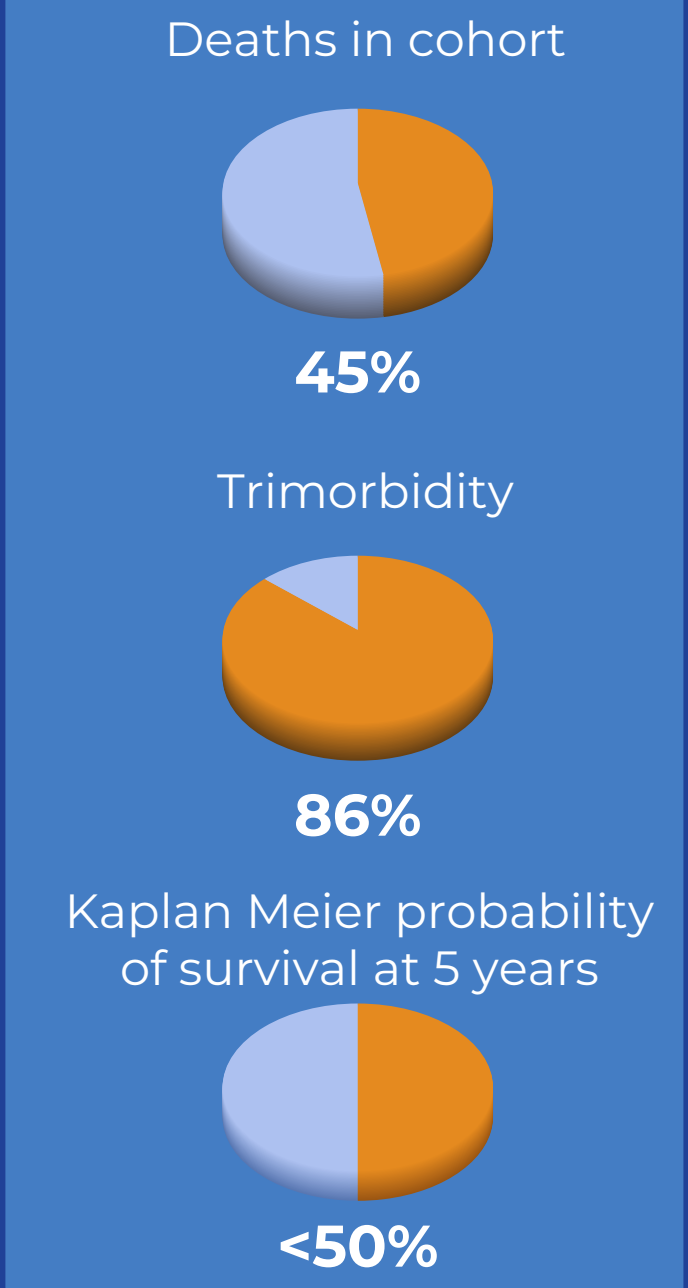
Housing retention



Housing stability



Survival characteristics



A Medicaid-funded scattered-site PSH program for chronically unsheltered individuals in Boston found high mortality, low housing stability, and poor long-term housing outcomes

Housing Boston's Chronically Homeless Unsheltered Population: 14-years later

Roncarati et al. (2021) | Medical Care | DOI:10.1097/MLR.0000000000001409