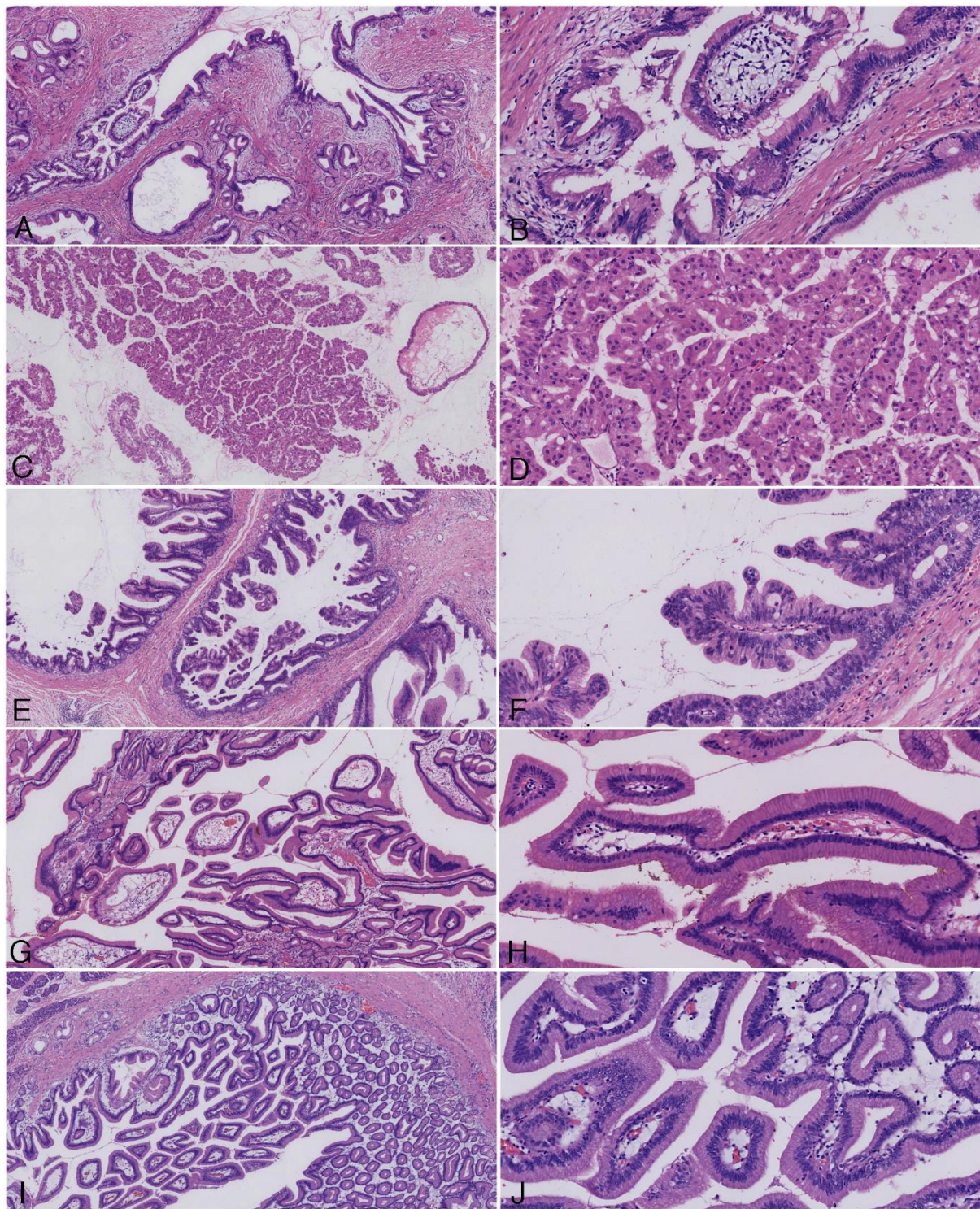
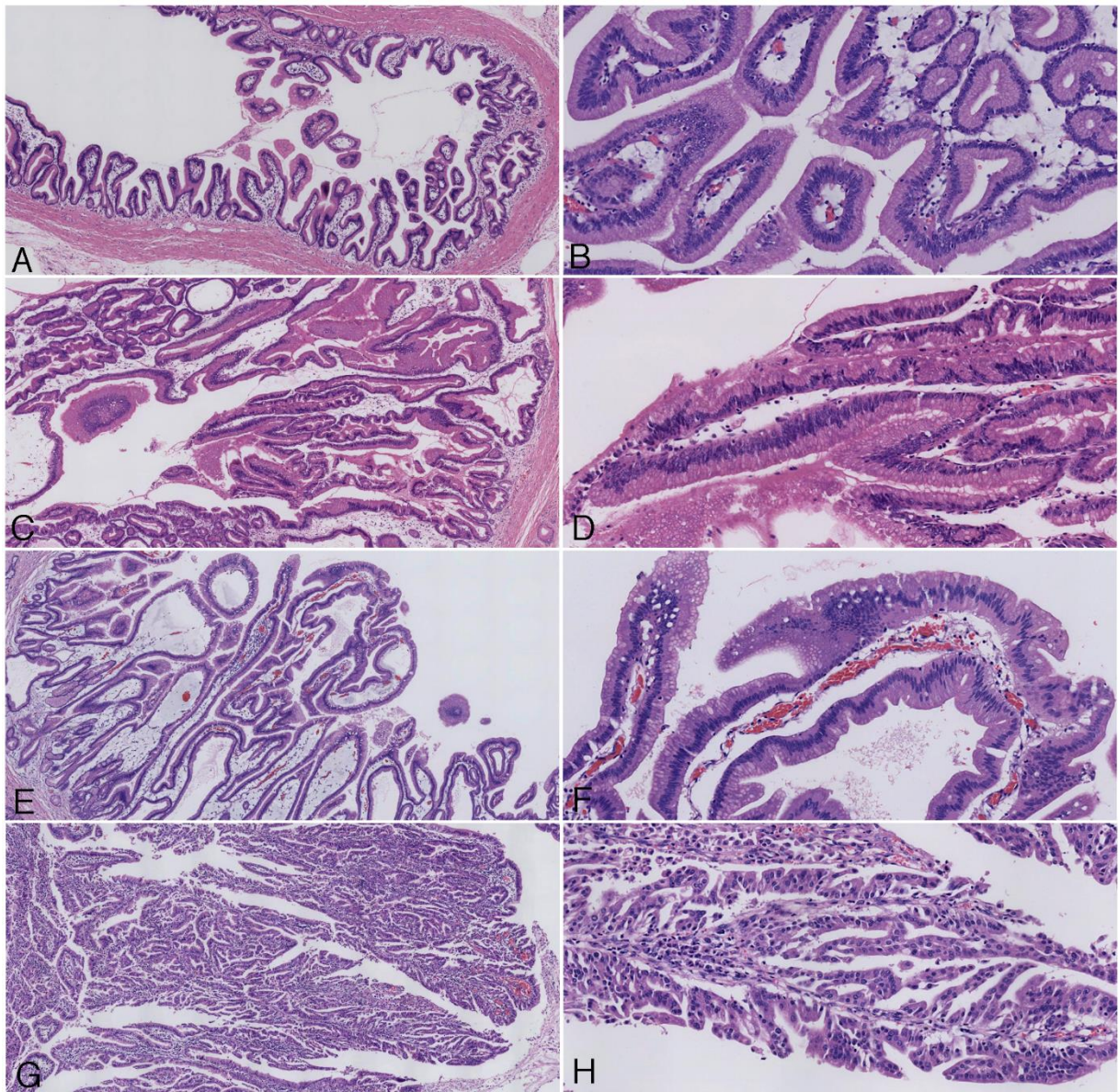


A Consensus Study of the Grading and Typing of Intraductal Papillary Mucinous Neoplasms of the Pancreas

SUPPLEMENTAL DIGITAL CONTENT



SUPPLEMENTARY FIGURE 1. Histopathological images of cases without disagreement. A and B, Case #1 was evaluated as an IPMA/low-grade IPMN of gastric type. C and D, Case #3 was evaluated as a non-invasive IPMC/high-grade IPMN of oncocytic type. E and F, Case #4 was evaluated as a non-invasive IPMC/high-grade IPMN of intestinal type. G and H, Case #5 was evaluated as an IPMA/low-grade IPMN of gastric type. I and J, Case #8 was evaluated as an IPMA/low-grade IPMN of gastric type with pyloric gland subtype.



SUPPLEMENTARY FIGURE 2. Histopathological images of cases without disagreement (continued from Supplementary Figure 1). A and B, Case #9 was evaluated as an IPMA/low-grade IPMN of gastric type. C and D, Case #10 was evaluated as an IPMA/low-grade IPMN of gastric type. E and F, Case #13 was evaluated as an IPMA/low-grade IPMN of gastric type. G and H, Case #19 was evaluated as a non-invasive IPMC/high-grade IPMN of pancreatobiliary type.