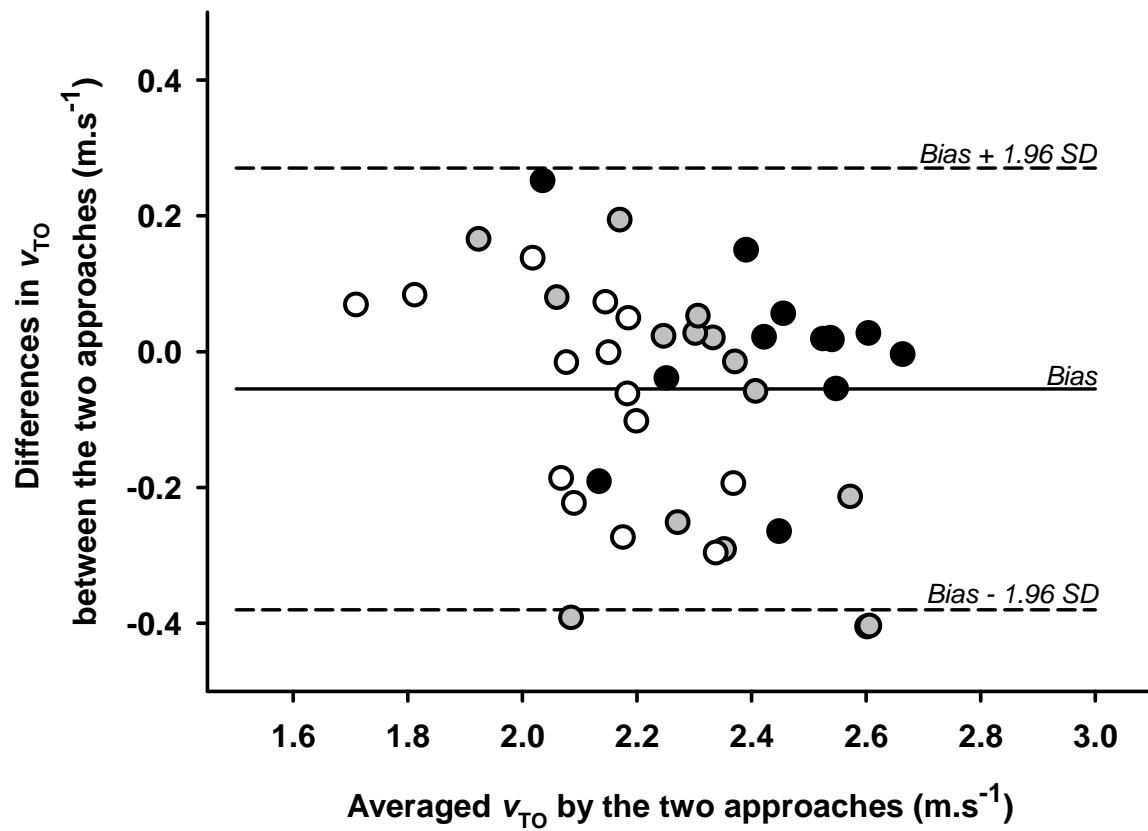


SUPPLEMENTAL DIGITAL CONTENT 3



Bland and Altman plot of differences between values of centre of mass take-off velocity (v_{TO}) predicted from the proposed theoretical approach and those measured during the experimental tests for push-off angles of 10° (black filled circles), 20° (grey filled circles) and 30° (open circles). The solid horizontal line corresponds to the bias (mean differences). Upper and lower horizontal dotted lines represent the limits of agreement (bias \pm 1.96 SD of the differences).