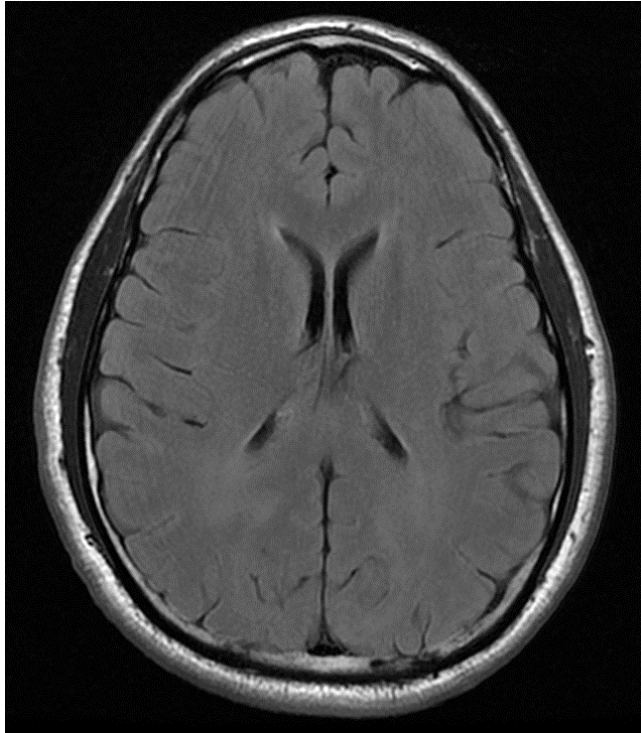
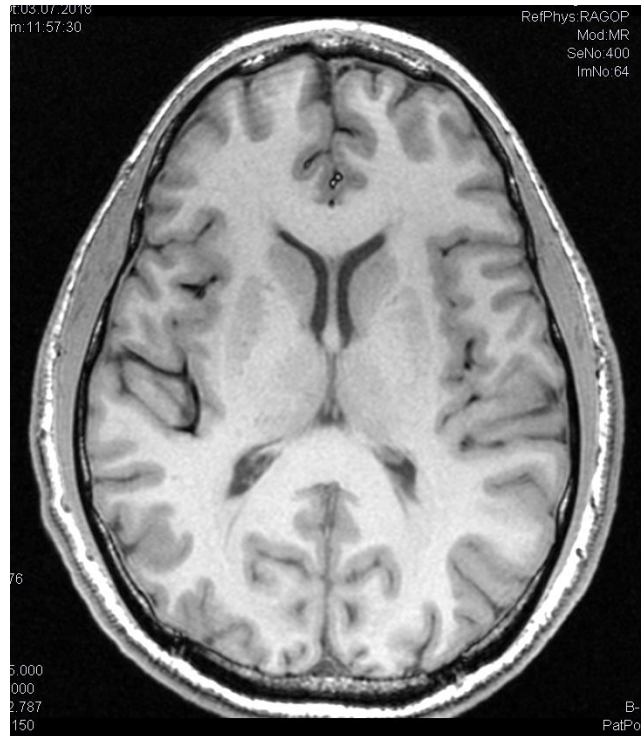


Supplement Material: MRI images of cortex and myelon pre-treatment



**Supp. 1:** Cerebral MRI Flair axial



**Supp. 2:** Cerebral MRI FSPGR (fast spoiled gradient echo) axial



**Supp. 3:** Cervial and thoracic myelon MRI Flair sagittal

Cerebral MRI showed very subtle symmetrical periventricular hyperintensities without clear signs of pathology. No cerebral lesions were detected. Cervical and thoracic myelon MRI did not reveal any lesions or other abnormalities.