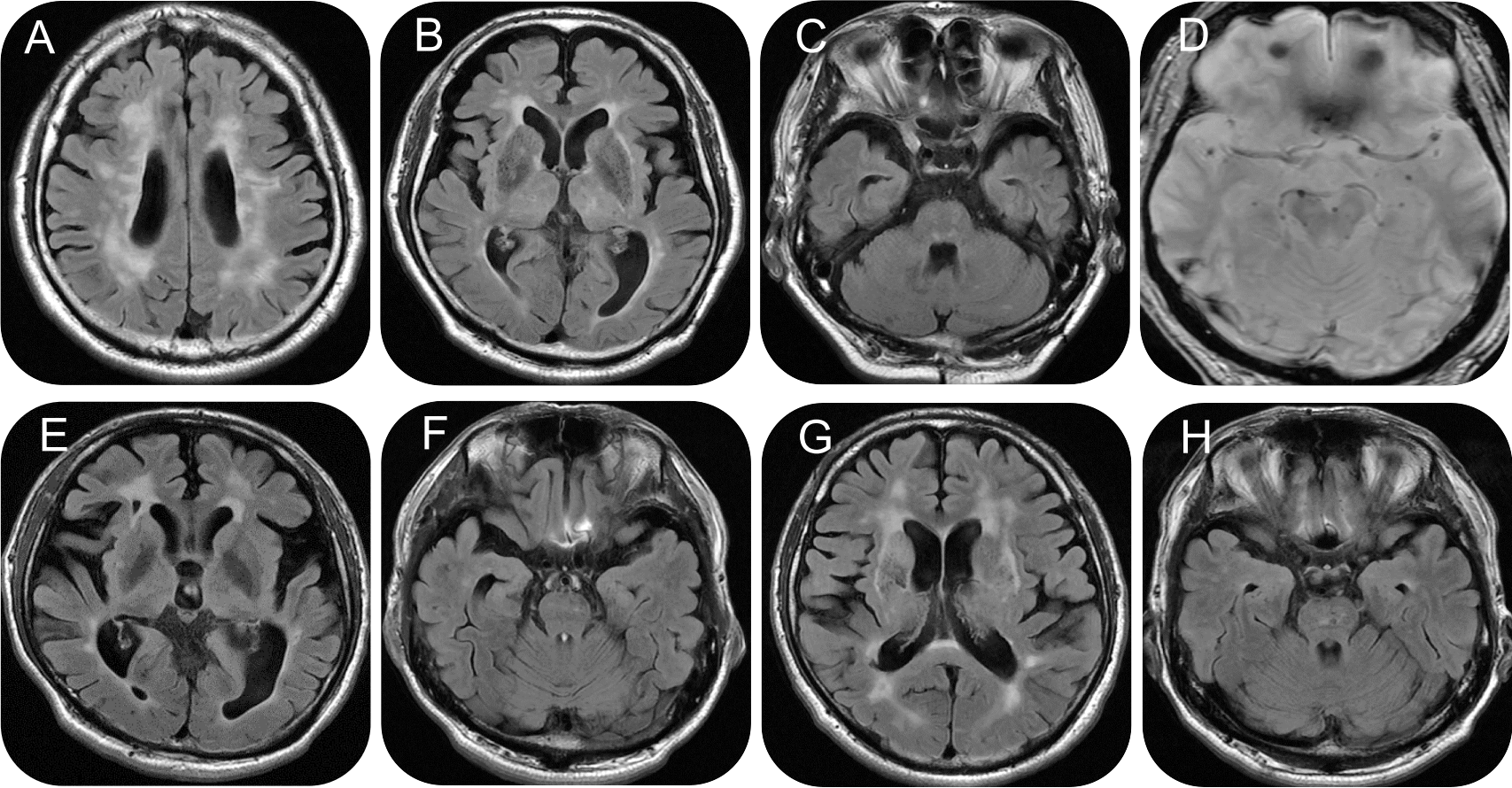


Supplemental Fig.



eFig. 1 Magnetic resonance imaging (MRI) of symptomatic *HTRA1* variant carriers.

(A–D) Patient 4 (II-5) at 70 years of age. **(E, F)** Patient 5 (III-4) at 49 years of age. **(G, H)** Patient 6 (III-6) at 47 years of age. Fluid-attenuated inversion recovery images **(A–C, E–H)** showed periventricular to subcortical white matter hyperintensities, lacunar infarctions, and cerebral atrophy. Abnormal intensities were also observed in the external capsule **(B, G)** and brainstem **(C, F, H)**, but not in the temporal pole **(C, F, H)**.