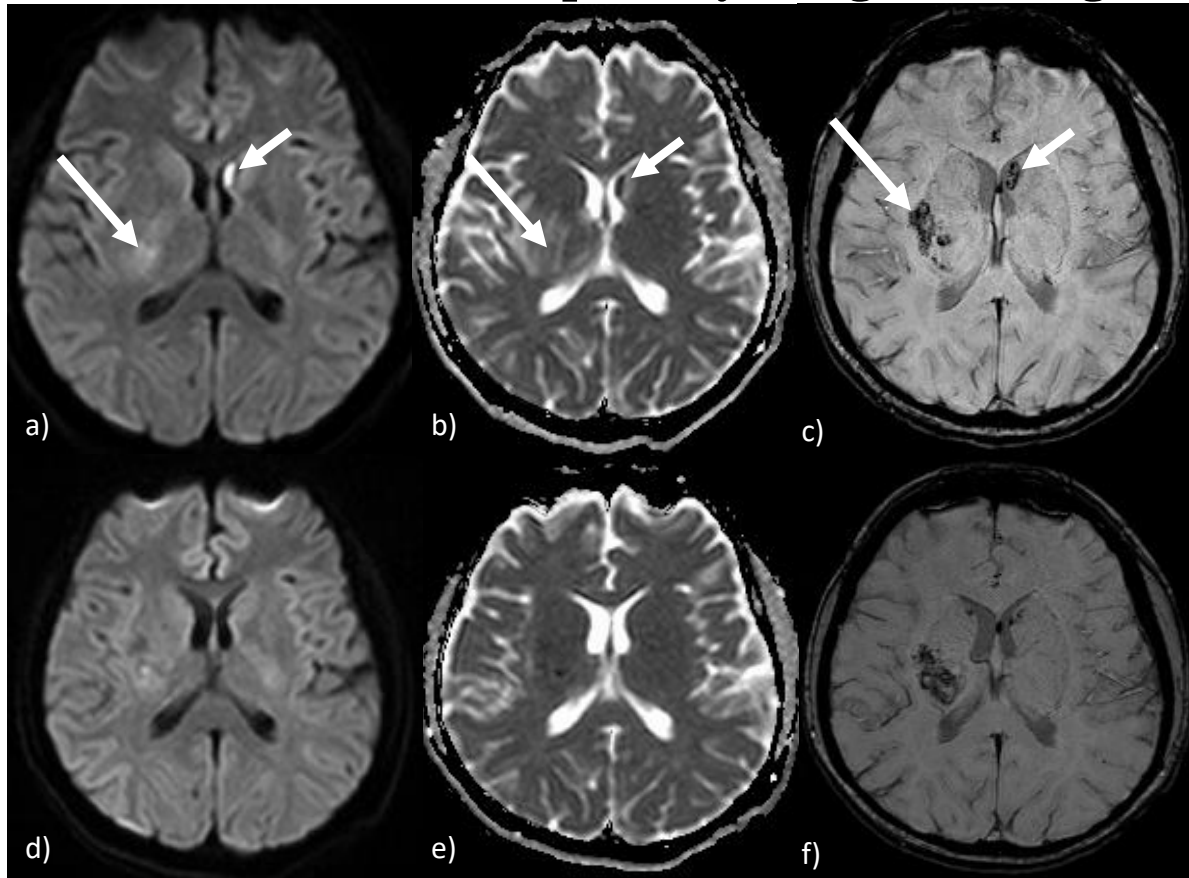


Supplemental Figures:

## Diffusion and Susceptibility Weighted Images



Supplemental E1: Partial diffusion restriction in the left caudate (short arrow) and right basal ganglia (long arrow) seen on MRI of the brain on admission (a & b) with near resolution after a week (d & e). Evidence of bilateral hemorrhage on susceptibility weighted images on admission (c) and after a week (f).