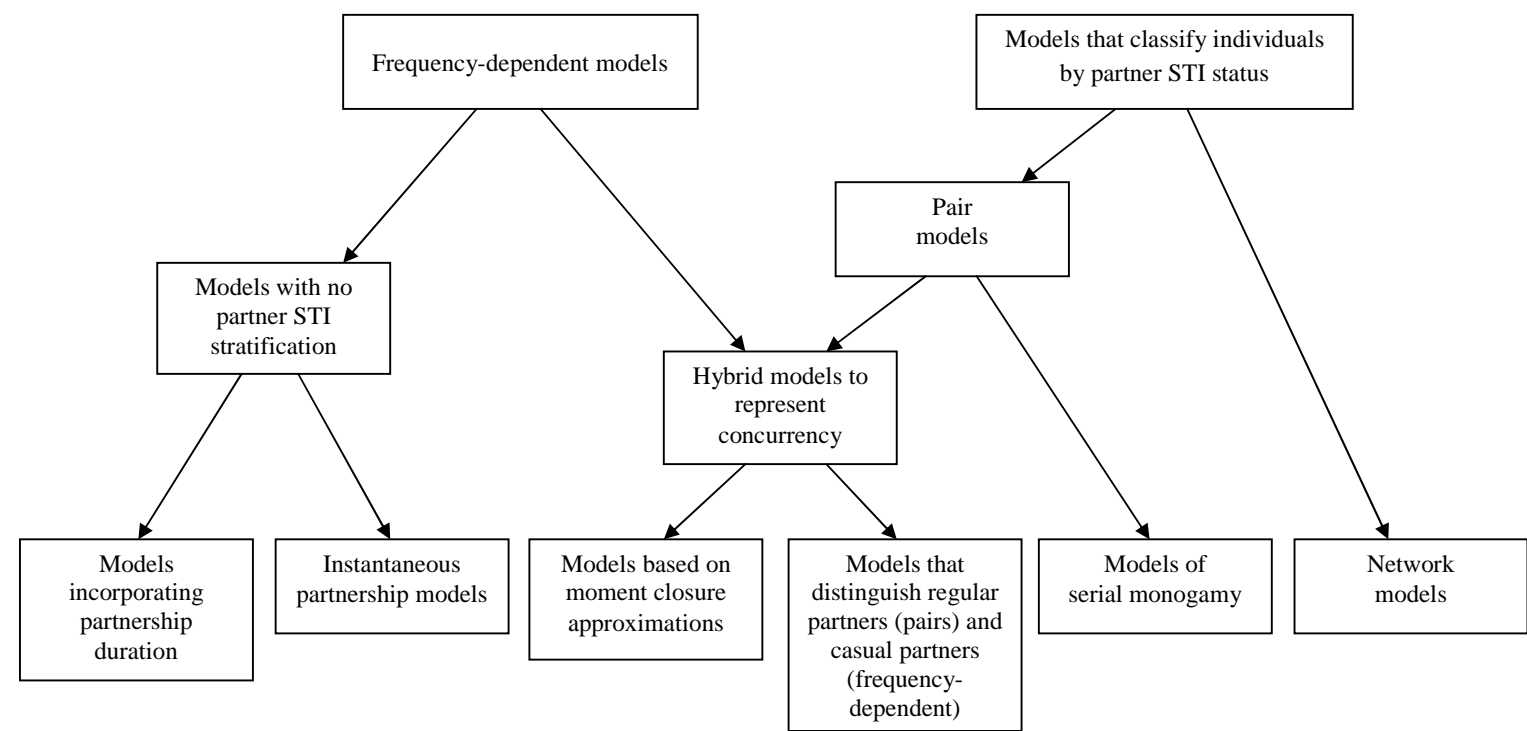


Figure: Types of STI models



Deterministic examples	Watts & May [1] Johnson et al [2]	Garnett et al [3] Foss et al [4] Bogaards et al [5] Brunham et al [6]	Ferguson & Garnett [7] Leung et al [8] Bauch & Rand [9]	Xiridou et al [10] Powers et al [11]	Dietz & Haderler [12] Chen et al [13] Lloyd-Smith et al [14]
Microsimulation examples	Phillips et al [15]				Van de Velde et al [16] Gray et al [17] Doherty et al [18] Kretzschmar et al [19] White et al [20]

## References

1. Watts CH, May RM. The influence of concurrent partnerships on the dynamics of HIV/AIDS. *Mathematical Biosciences* 1992; **108**:89-104.
2. Johnson LF, Dorrington RE, Bradshaw D, Pillay-Van Wyk V, Rehle TM. Sexual behaviour patterns in South Africa and their association with the spread of HIV: insights from a mathematical model. *Demographic Research* 2009; **21**:289-340.
3. Garnett GP, Mertz KJ, Finelli L, Levine WC, St Louis ME. The transmission dynamics of gonorrhoea: modelling the reported behaviour of infected patients from Newark, New Jersey. *Philosophical Transactions of the Royal Society of London. Series B* 1999; **354**:787-797.
4. Foss AM, Vickerman PT, Chalabi Z, Mayaud P, Alary M, Watts CH. Dynamic modelling of herpes simplex virus type-2 (HSV-2) transmission: Issues in structural uncertainty. *Bulletin of Mathematical Biology* 2009; **71**:720-749.
5. Bogaards JA, Xiridou M, Coupé VM, Meijer CJ, Wallinga J, Berkhof J. Model-based estimation of viral transmissibility and infection-induced resistance from the age-dependent prevalence of infection for 14 high-risk types of human papillomavirus. *American Journal of Epidemiology* 2010; **171**:817-825.
6. Brunham RC, Pourbohloul B, Mak S, White R, Rekart ML. The unexpected impact of a *Chlamydia trachomatis* infection control program on susceptibility to reinfection. *Journal of Infectious Diseases* 2005; **192**:1836-1844.
7. Ferguson NM, Garnett GP. More realistic models of sexually transmitted disease transmission dynamics: sexual partnership networks, pair models, and moment closure. *Sexually Transmitted Diseases* 2000; **27**:600-609.
8. Leung KY, Kretzschmar M, Diekmann O. *SI* infection on a dynamic partnership network: characterization of  $R_0$ . *Journal of Mathematical Biology* 2015; **71**:1-56.
9. Bauch C, Rand DA. A moment closure model for sexually transmitted disease transmission through a concurrent partnership network. *Proceedings of the Royal Society of London, Series B*. 2000; **267**:2019-2027.
10. Xiridou M, Geskus R, De Wit J, Coutinho R, Kretzschmar M. The contribution of steady and casual partnerships to the incidence of HIV infection among homosexual men in Amsterdam. *AIDS* 2003; **17**:1029-1038.
11. Powers KA, Ghani AC, Miller WC, Hoffman IF, Pettifor AE, Kamanga G, *et al.* The role of acute and early HIV infection in the spread of HIV and implications for transmission prevention strategies in Lilongwe, Malawi: a modelling study. *Lancet* 2011; **378**:256-268.
12. Dietz K, Haderler K. Epidemiological models for sexually transmitted diseases. *Journal of Mathematical Biology* 1988; **26**:1-25.
13. Chen MI, Ghani AC, Edmunds J. Mind the gap: the role of time between sex with two consecutive partners on the transmission dynamics of gonorrhea. *Sexually Transmitted Diseases* 2008; **35**:435-444.
14. Lloyd-Smith JO, Getz WM, Westerhoff HV. Frequency-dependent incidence in models of sexually transmitted diseases: portrayal of pair-based transmission and effects of illness on contact behaviour. *Proceedings of the Royal Society of London, Series B*. 2004; **271**:625-634.

15. Phillips AN, Pillay D, Garnett G, Bennett D, Vitoria M, Cambiano V, *et al.* Effect on transmission of HIV-1 resistance of timing of implementation of viral load monitoring to determine switches from first to second-line antiretroviral regimens in resource-limited settings. *AIDS* 2011; **25**:843-850.
16. Van de Velde N, Boily MC, Drolet M, Franco EL, Mayrand MH, Kliewer EV, *et al.* Population-level impact of the bivalent, quadrivalent, and nonavalent human papillomavirus vaccines: a model-based analysis. *Journal of the National Cancer Institute* 2012; **104**:1712-1723.
17. Gray RT, Beagley KW, Timms P, Wilson DP. Modeling the impact of potential vaccines on epidemics of sexually transmitted *Chlamydia trachomatis* infection. *Journal of Infectious Diseases* 2009; **199**:1680-1688.
18. Doherty IA, Shiboski S, Ellen JM, Adimora AA, Padian NS. Sexual bridging socially and over time: a simulation model exploring the relative effects of mixing and concurrency on viral sexually transmitted infection transmission. *Sexually Transmitted Diseases* 2006; **33**:368-373.
19. Kretzschmar M, van Duynhoven Y, Severijnen A. Modelling prevention strategies for gonorrhoea and chlamydia using stochastic network simulations. *American Journal of Epidemiology* 1996; **144**:306-317.
20. White RG, Orroth KK, Korenromp EL, Bakker R, Wambura M, Sewankambo NK, *et al.* Can population differences explain the contrasting results of the Mwanza, Rakai, and Masaka HIV/sexually transmitted disease intervention trials?: A modeling study. *Journal of Acquired Immune Deficiency Syndromes* 2004; **37**:1500-1513.