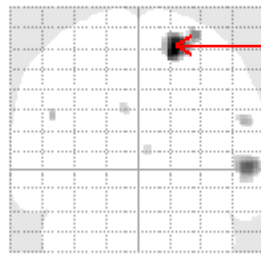
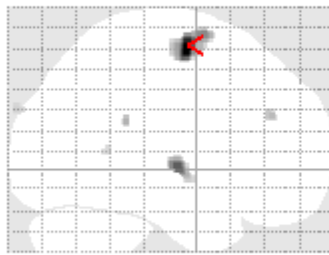
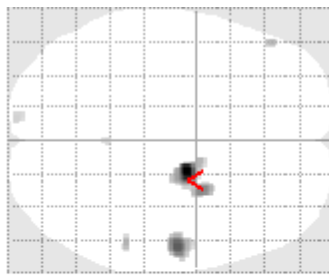


positive correlation with helplessness

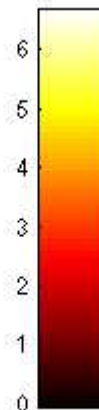
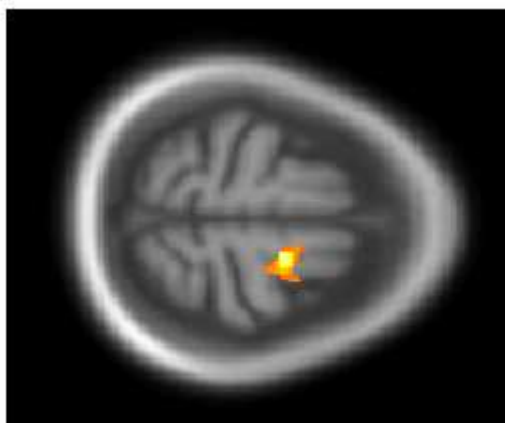
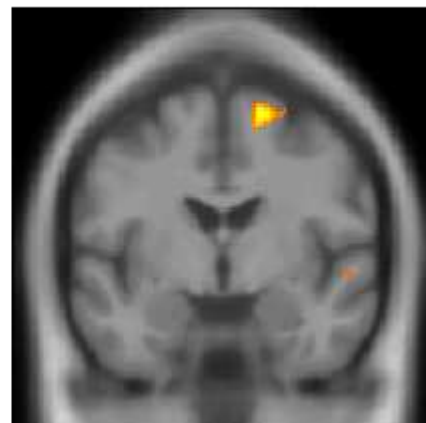
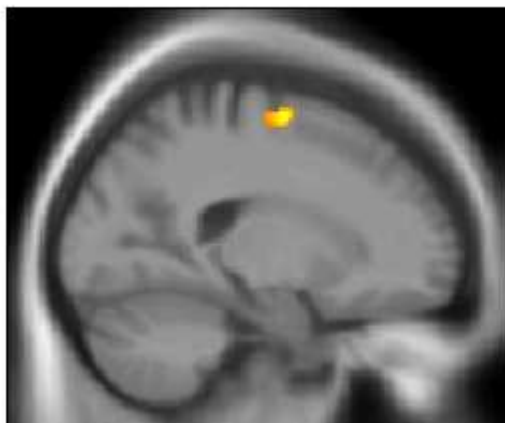


R MFG

R STG



SPMresults: \helplessness_age_gmv
Height threshold $T = 3.450189$ { $p < 0.001$ (unc.)}
Extent threshold $k = 5$ voxels



Supplementary Figure 1. Positive correlation between helplessness (AEQ-HHS) and regional gray matter volume. MFG: medial frontal gyrus; STG: superior temporal gyrus. Statistical maps were set at a cluster threshold of 5 voxels corresponding to an uncorrected $p < 0.001$.