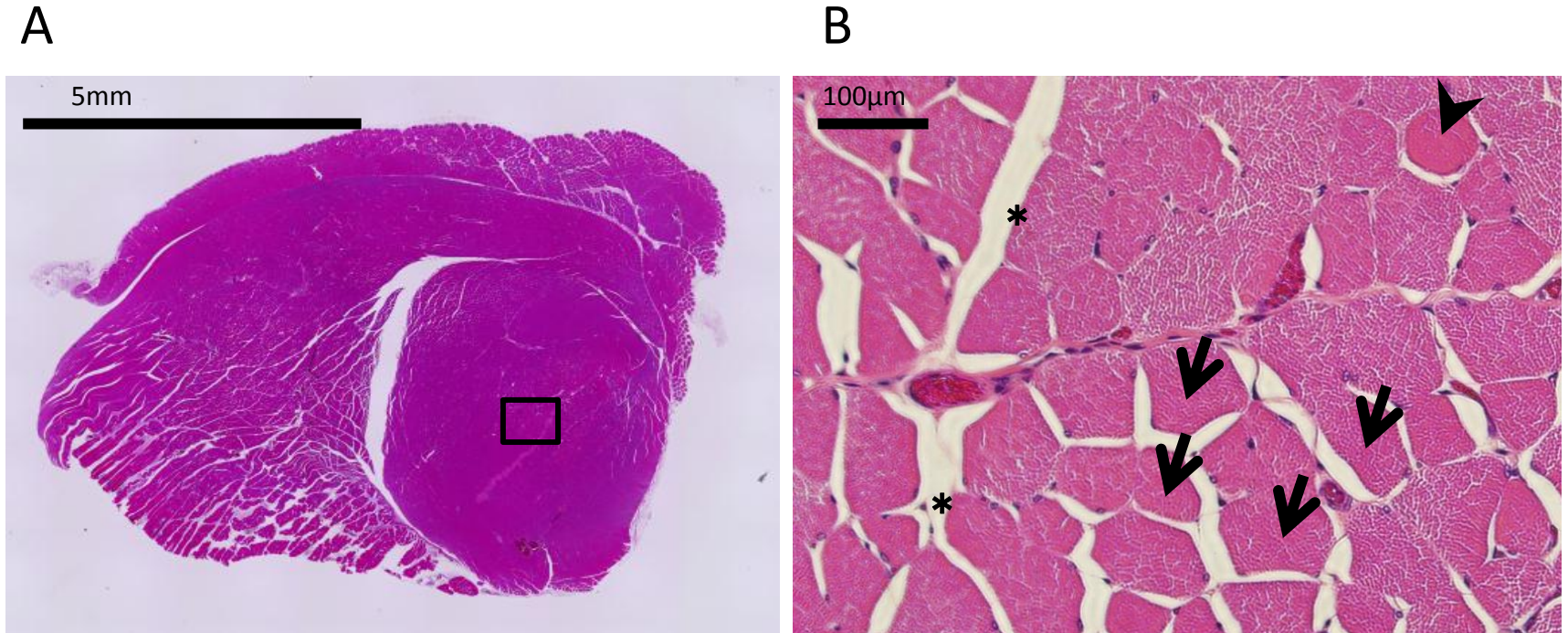


## Supplemental Figure 1



(A) Cross-section of quadriceps femoris muscle (hematoxylin and eosin staining). The central portion of the vastus intermedius muscle (rectangular frame) was observed histologically. (B) High-magnification view of area in the rectangular frame. Muscle deterioration signs, namely hypercontracted fibers (→), rounded fibers (➤), and edema (\*), were evaluated.