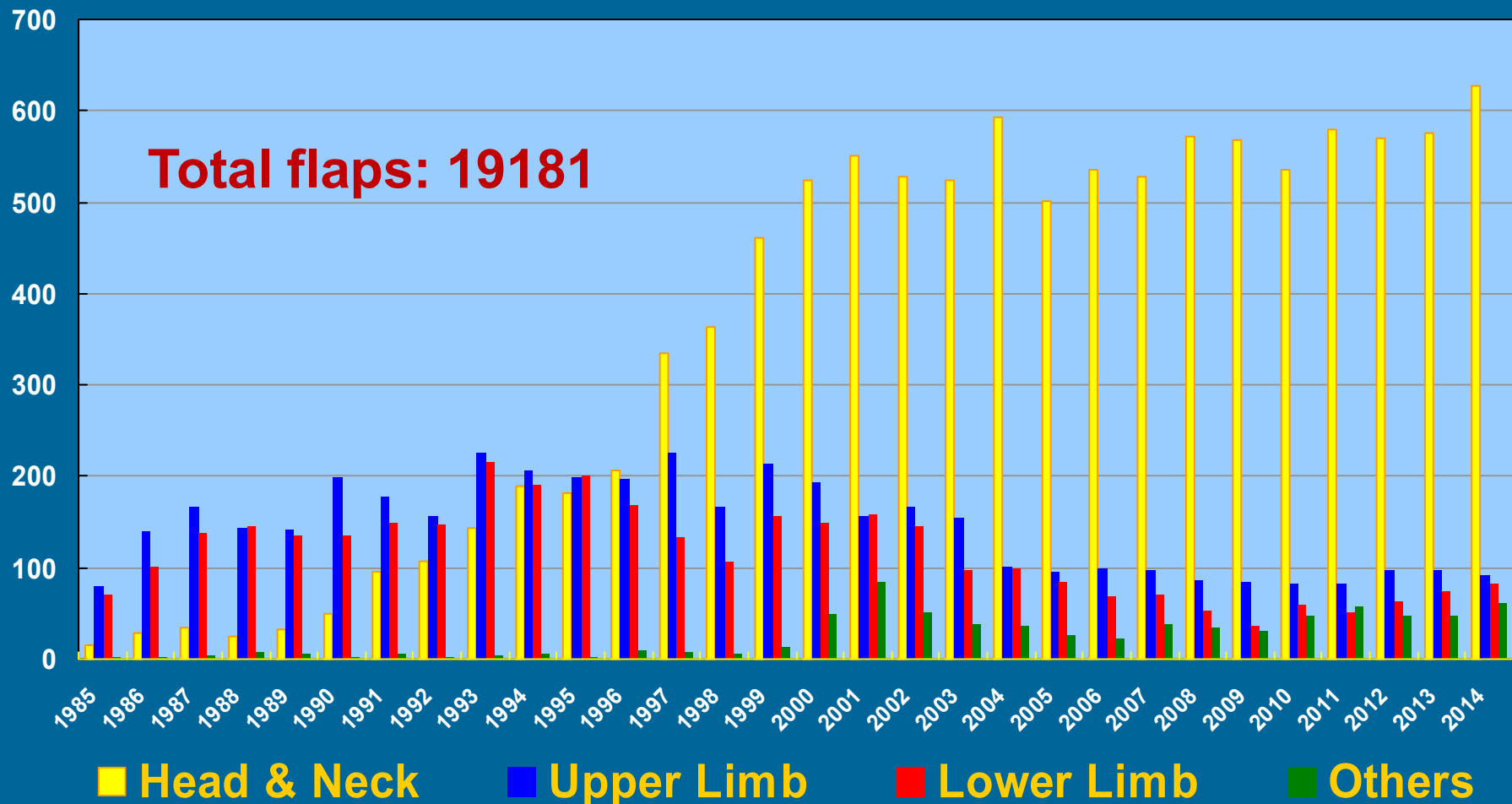
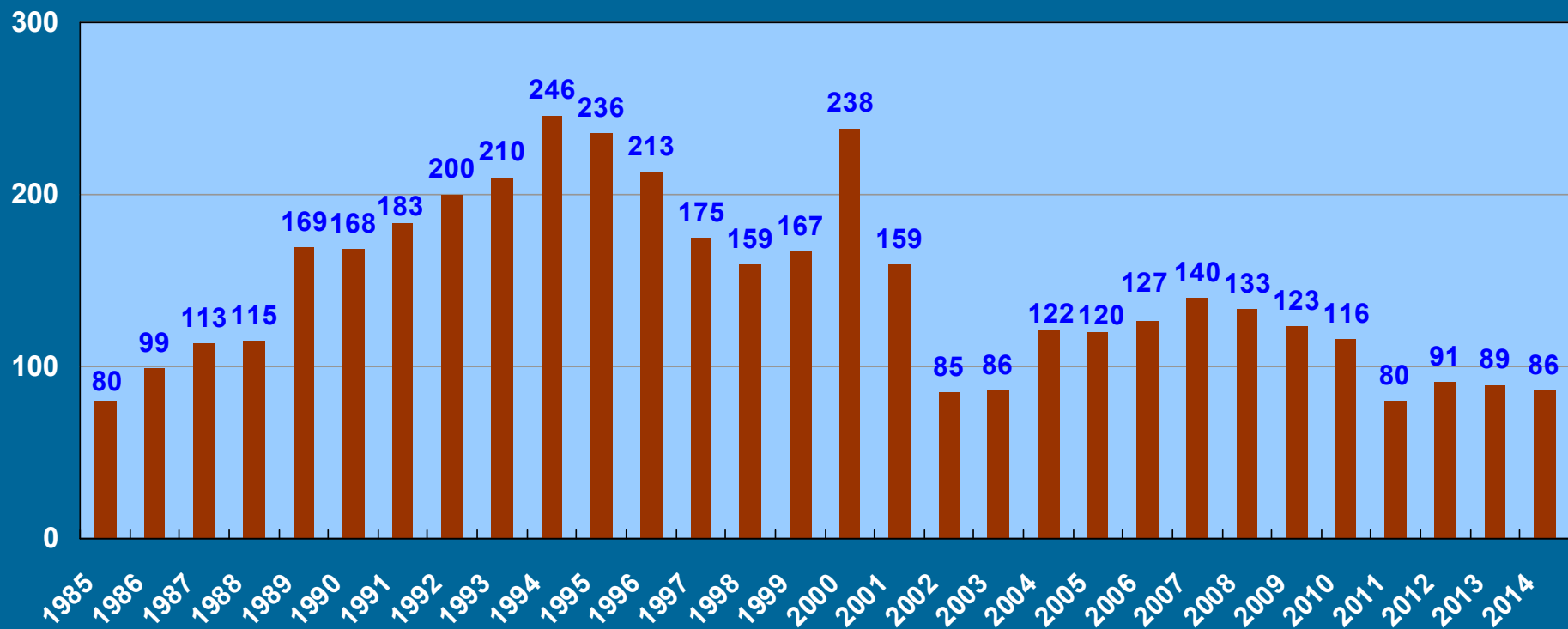


Free Tissue Transfer at CGMH

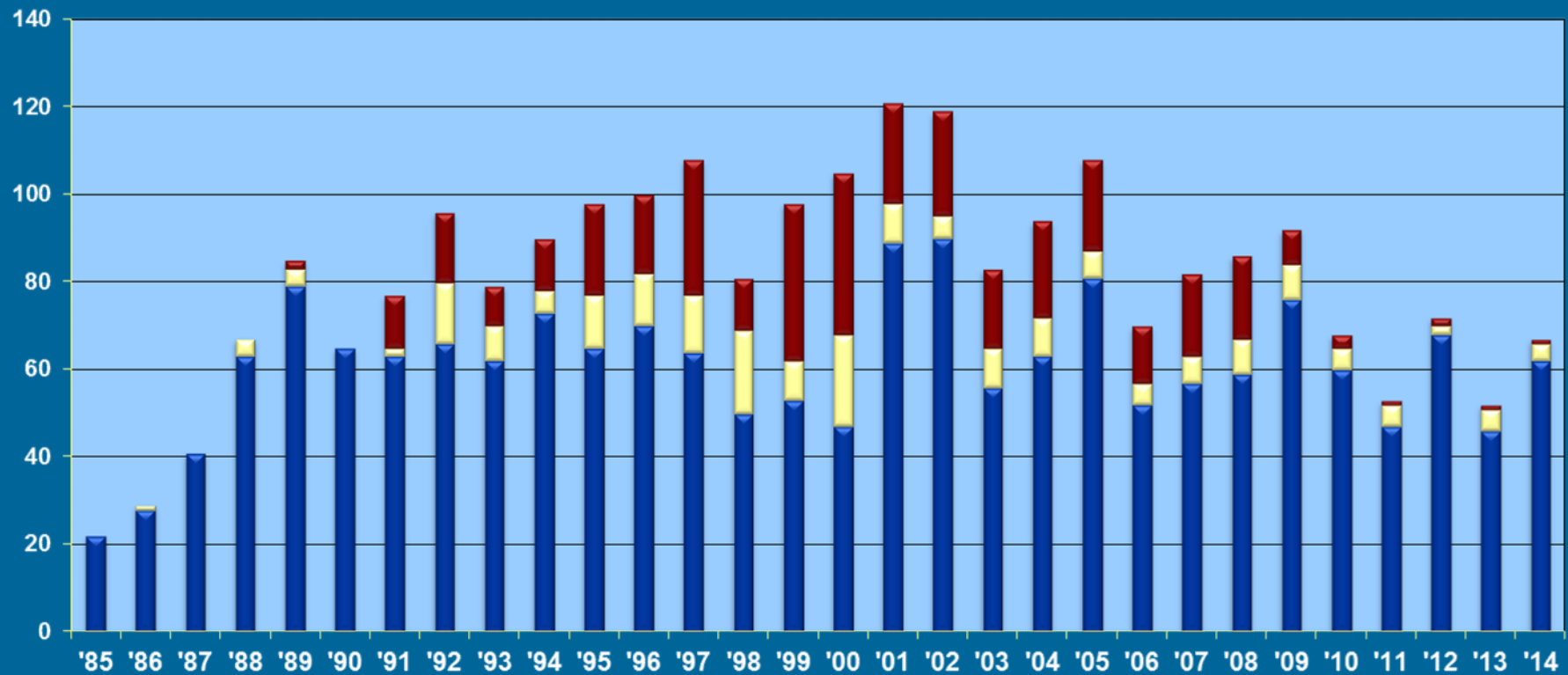


Replantation at CGMH

Total cases: 4328



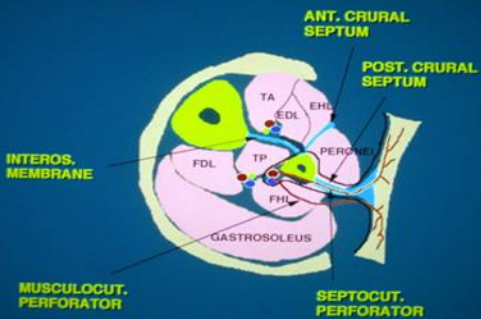
Brachial Plexus Reconstruction at CGMH



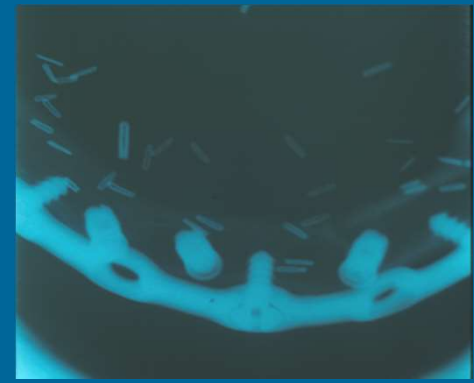
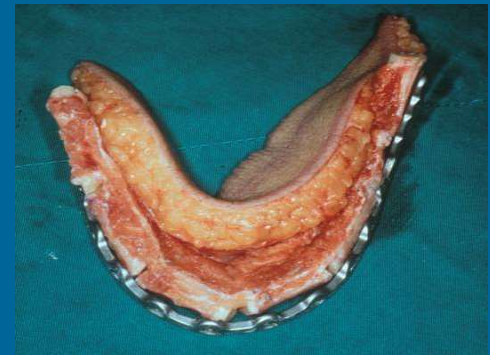
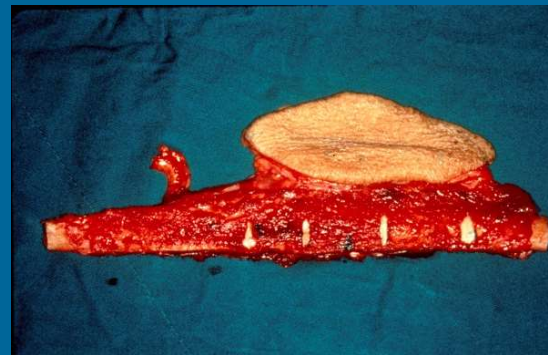
- Late-OBPP (381)
- Early-OBPP (210)
- Adult-BPI (1817)

Total cases: 2408

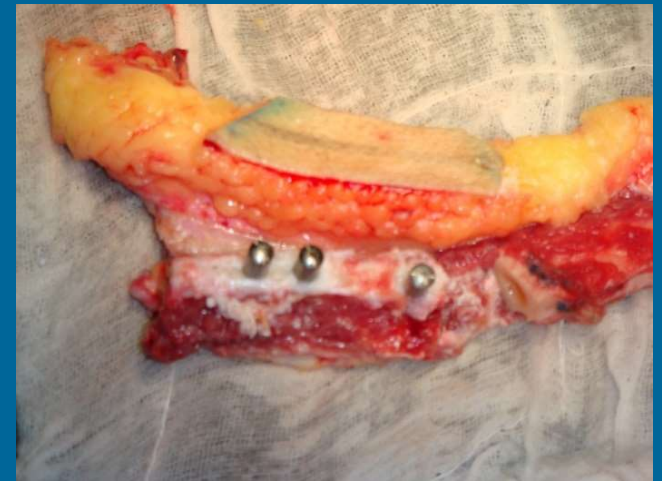
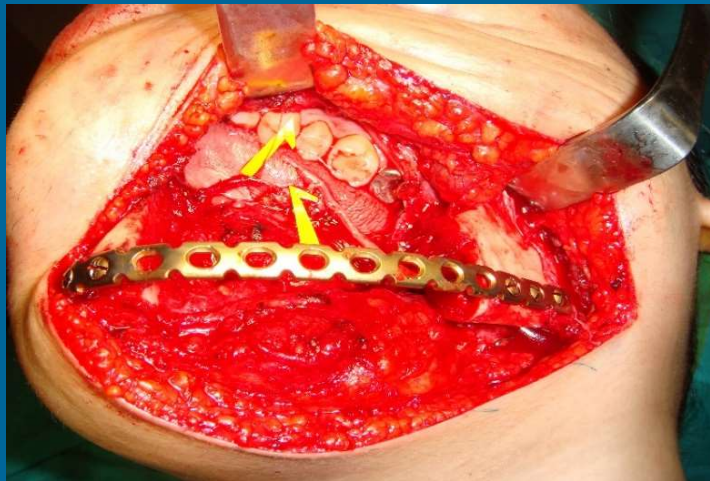
From Jan 1985 to Dec 2014



Reconstruction of Mandible after Ameloblastoma Excision with Fibula Osteoseptocutaneous Flap and Secondary Osteointegration Teeth Implantation



Immediate (Primary) Osteointegration Teeth in the Fibula Reconstructed Mandible



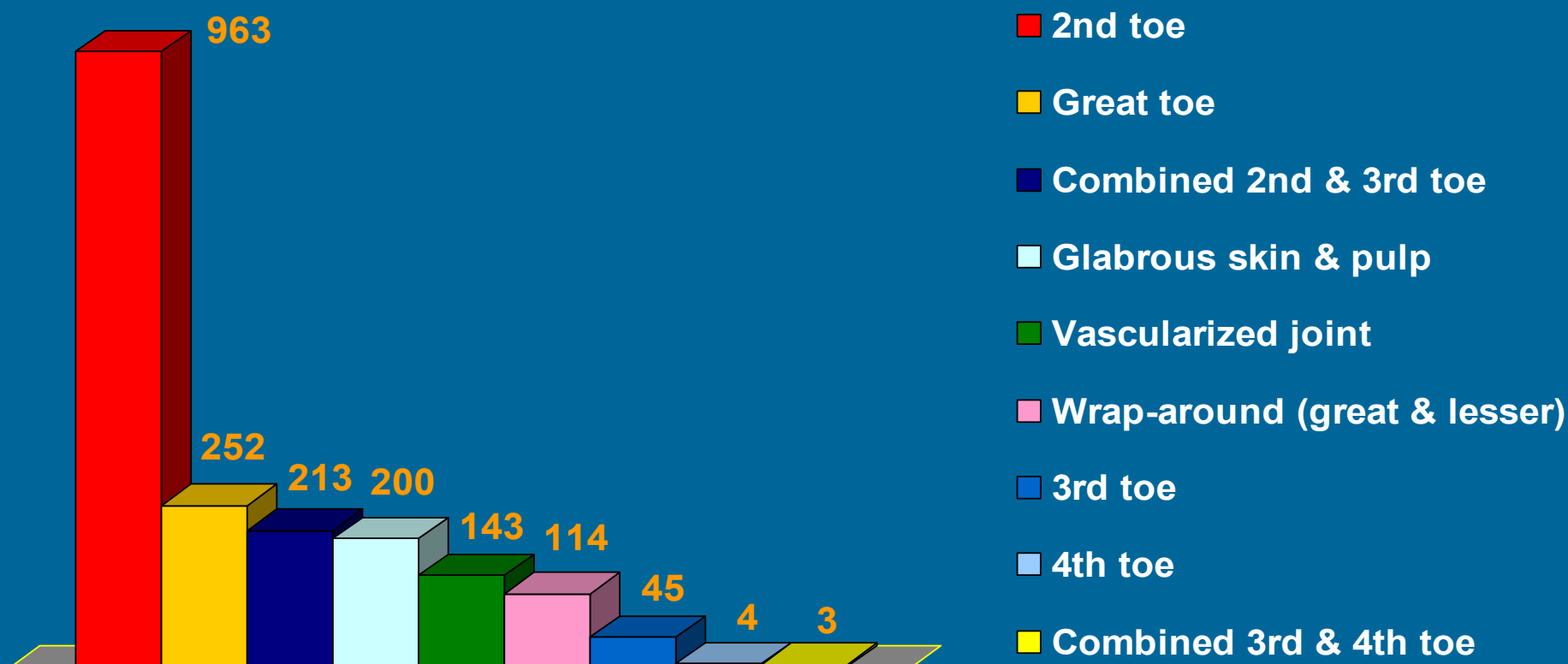
Thumb Reconstruction with a Trimmed Great Toe



Bilateral Metacarpal Hands Reconstruction with a Total of Five Toes Transplantation



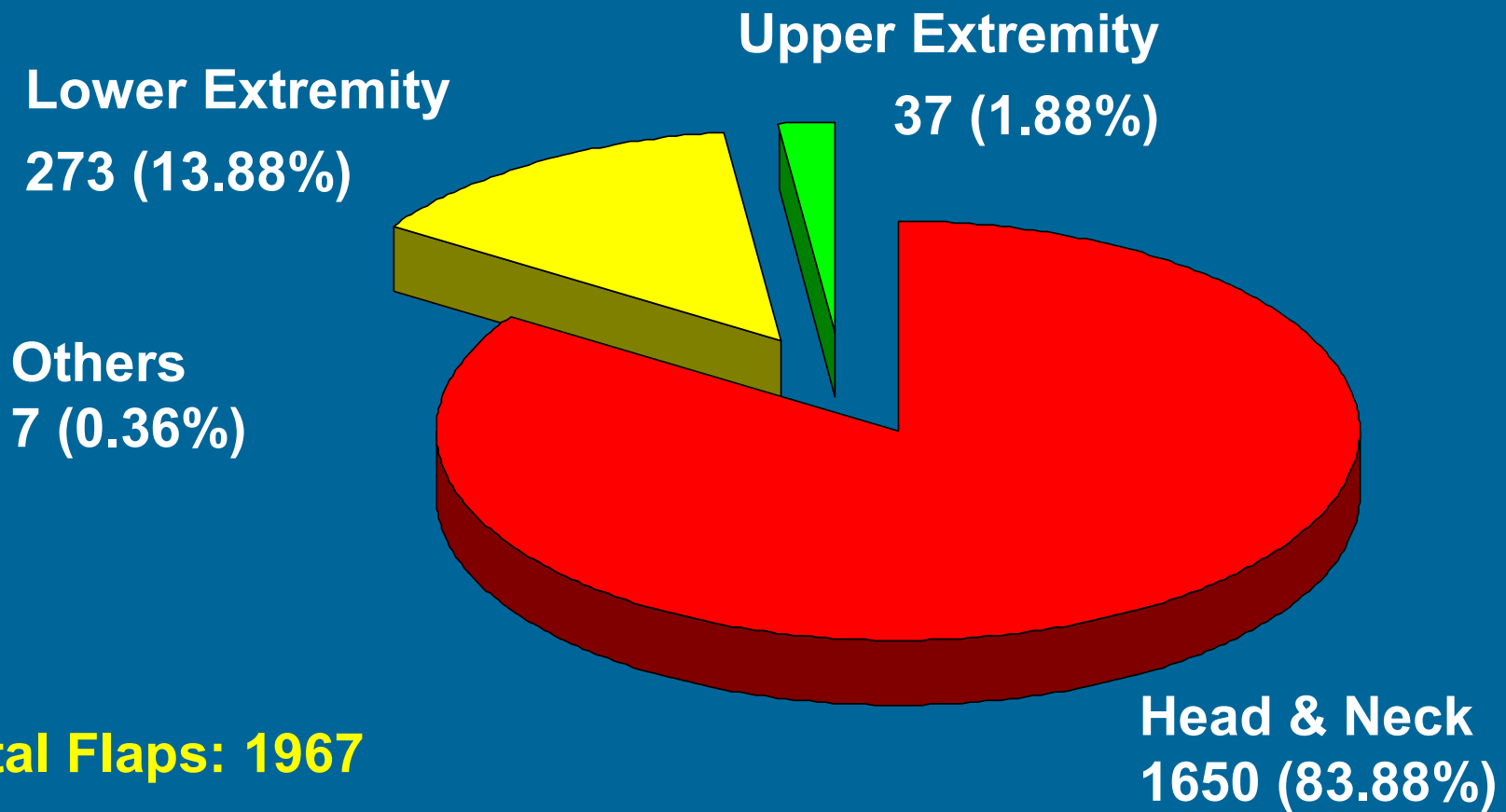
Toe-to-Hand Transplantation in CGMH



Total: 1937 operations, 2153 toes transferred

From Jan. 1985 to Dec. 2014

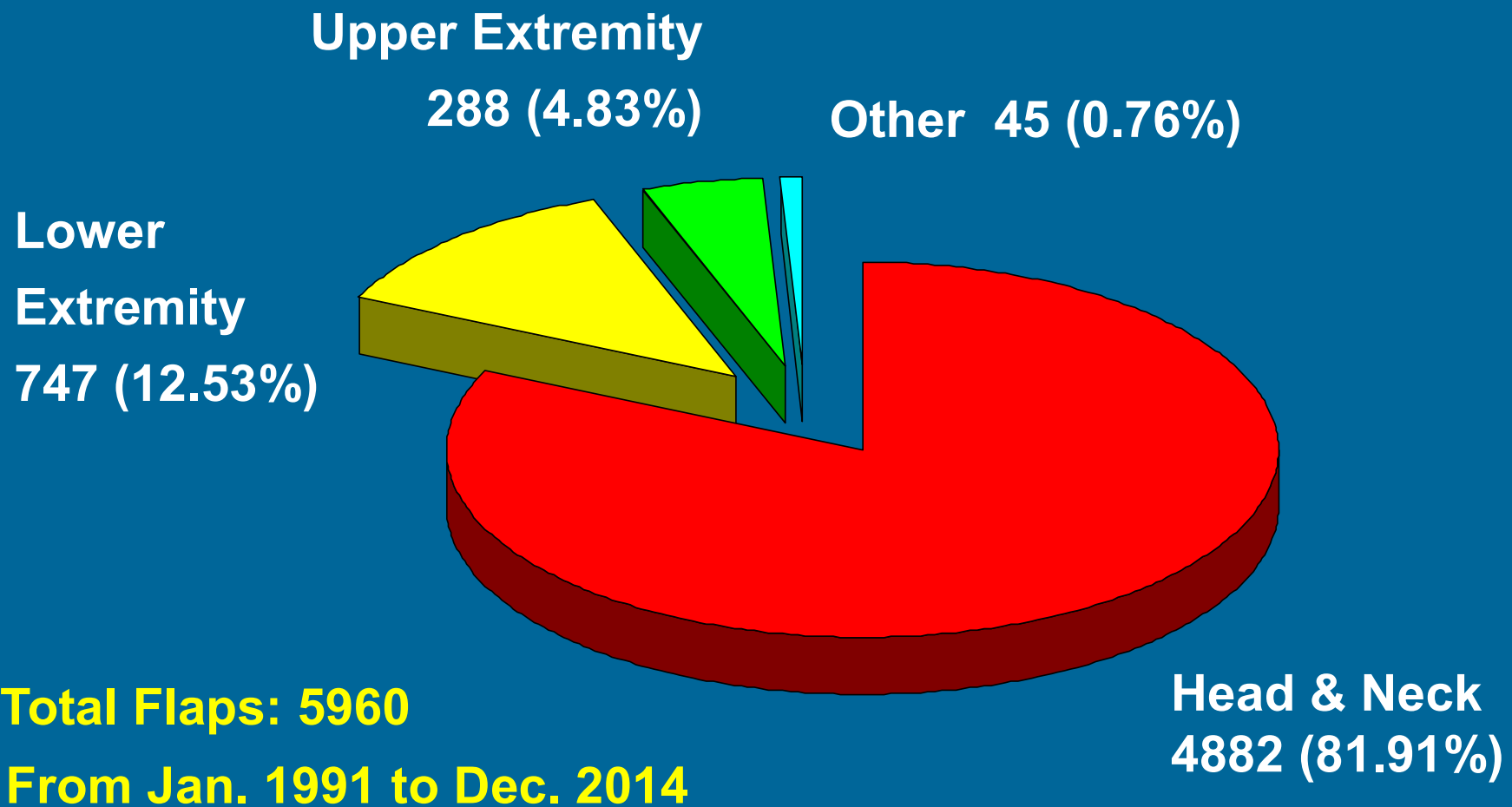
Application of Fibula OSC Flap



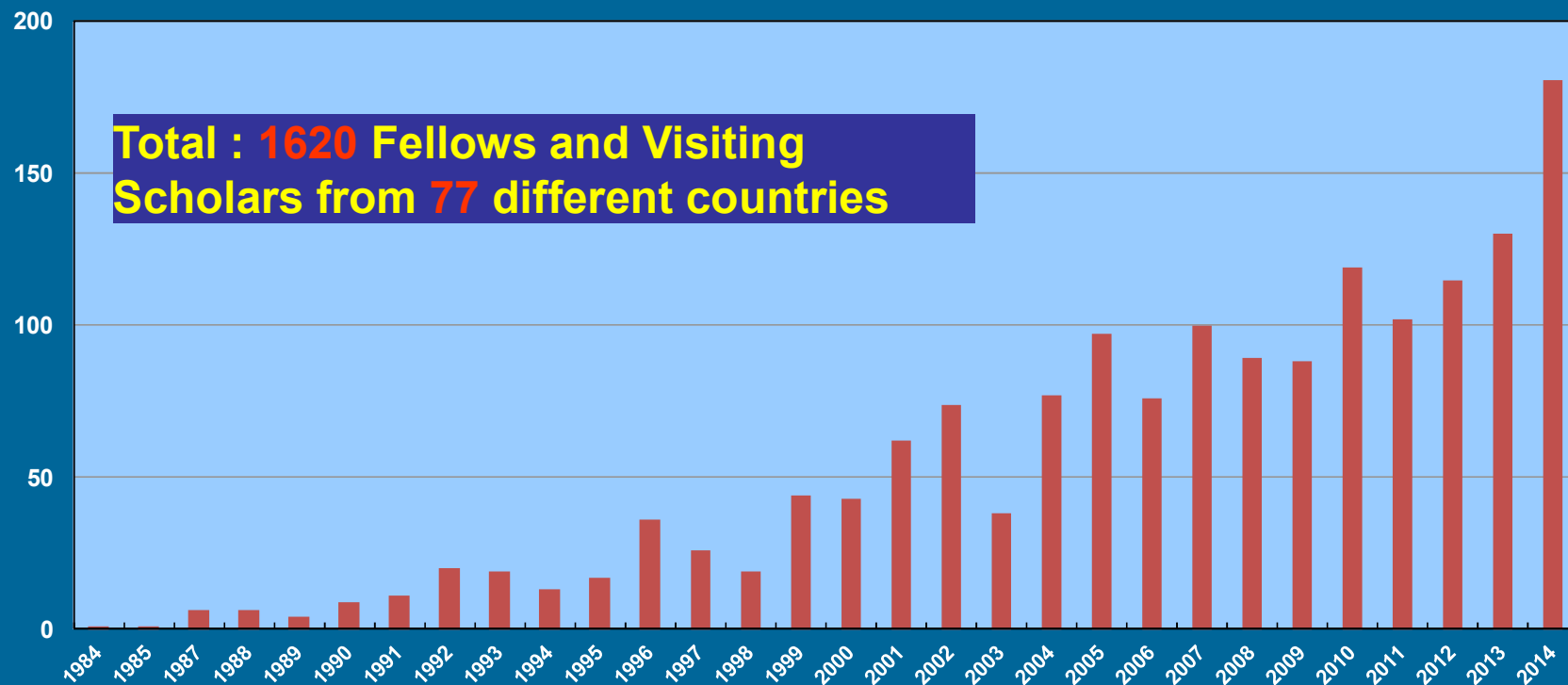
Total Flaps: 1967

From Jan. 1985 to Dec. 2014

Application of Anterolateral Thigh Flap



International Fellows and Visiting Scholars of Plastic Surgery, Chang Gung Memorial Hospital



31 Professors and 28 Chiefs / Program Directors

Fig. 1 Total number of free flaps performed in CGMH.

Fig. 2 Total number of replantation cases performed in CGMH.

Fig. 3 Brachial plexus cases performed in CGMH.

Fig. 4 The anatomic study on the lateral leg skin and the osseoseptocutaneous fibula flap.

Fig. 5 Mandibular reconstruction with dental implants.

Fig. 6 Single-stage total mandibular reconstruction.

Fig. 7 Trimmed great toe to thumb.

Fig. 8 Metacarpal hand reconstruction.

Fig. 9 Total toe-to-hand cases performed in CGMH.

Fig. 10 Application of osseoseptocutaneous fibula flap in CGMH.

Fig. 11 Application of anterolateral thigh flap in CGMH.

Fig. 12 Total number of trained fellows and visiting scholars since 1984.