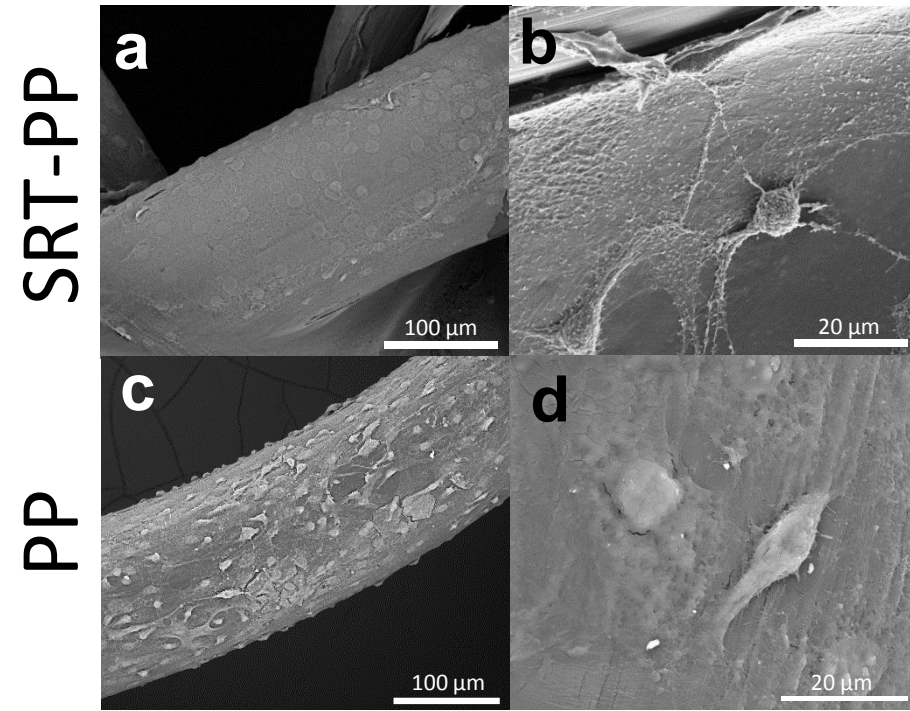
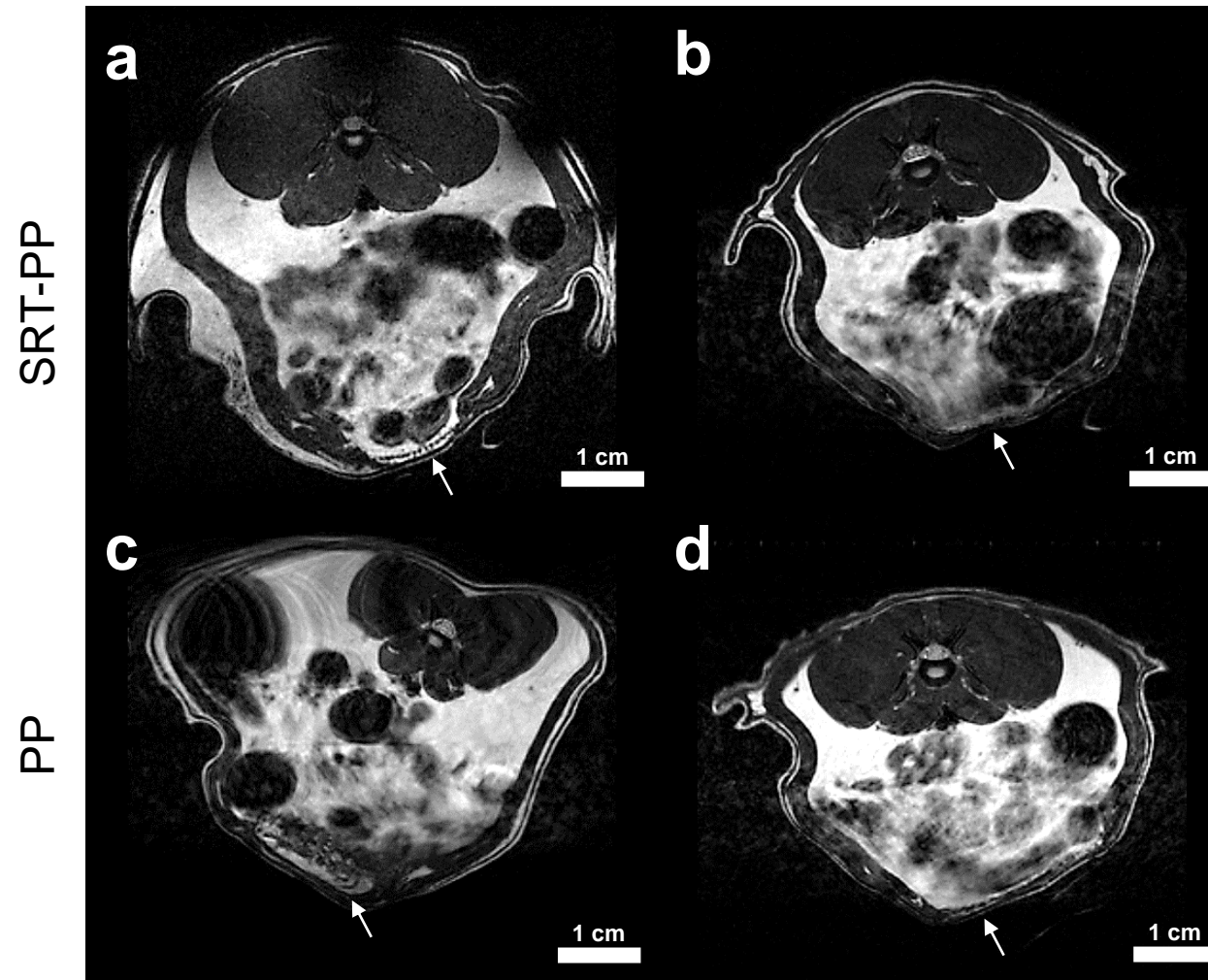


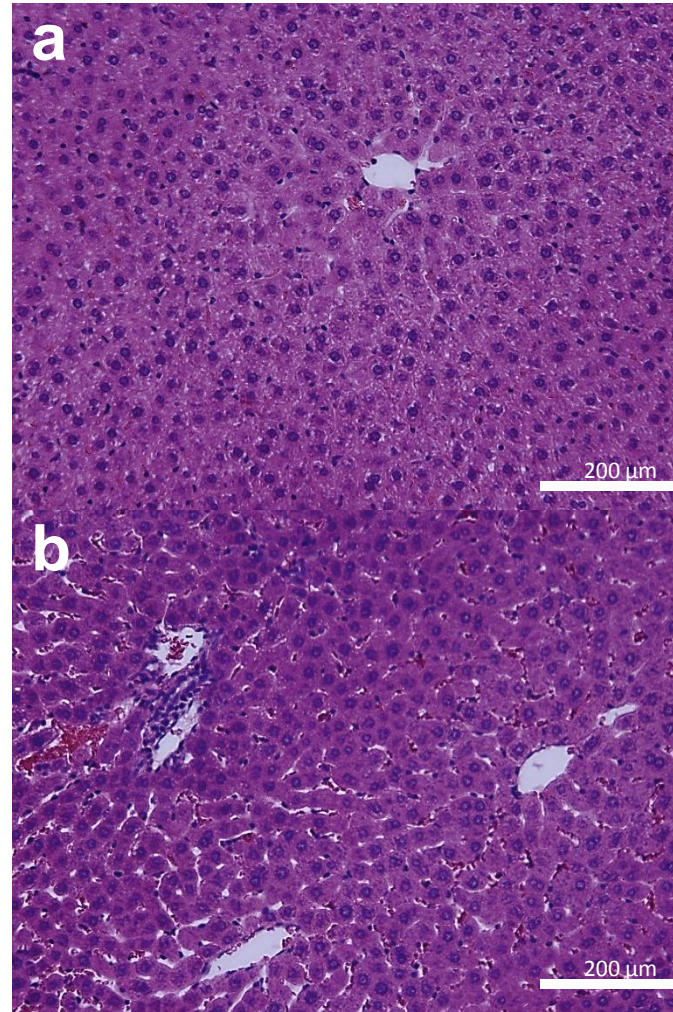
**SRT Protein.** (a) Common squid *Loligo Pealeii*, (b) suction cups on tentacles, and (c) SRT. (d) SDS-Protein gel for SRT. (e) Dip coating of PP mesh in SRT/HFIP solution.



**SEM.** (a) SEM of SRT-PP mesh. (b) Higher magnification of SRT-PP mesh. (c) SEM of PP mesh. (d) Higher magnification of PP mesh.



**MRI.** Good mesh incorporation into the abdominal wall and no seromas or occult hernias in both the SRT-PP (a&b) and PP (c&d) groups. Arrows are pointing to mesh.



**Liver Histology.** (a) H&E staining of SRT-PP rat liver (40X). (b) H&E staining of PP rat liver (40X).